



Hayes Park, Hillingdon, UB4 8FE

DOFF Cleaning Samples

Sample Results, Site Layouts and Drawing Plans

Introduction

This document presents a comprehensive showcase of DOFF cleaning samples, highlighting the effectiveness of the DOFF cleaning process through before and after photographs. Additionally, it includes site layouts and drawing plans to provide a complete overview of the cleaning locations.

DOFF Cleaning Overview

DOFF cleaning is a specialist technique that uses high-temperature steam to remove dirt, biological growth, paint, and other contaminants from surfaces such as stone, brick, and concrete. It is particularly valued for its gentle and effective cleaning without causing damage to delicate substrates.

Sample Cleaning Results

Below are examples of areas treated using DOFF cleaning, with clear visual comparisons of the surfaces before and after the process.

Sample 1: Wall 1 – Hayes Park Central

Before Cleaning



After Cleaning





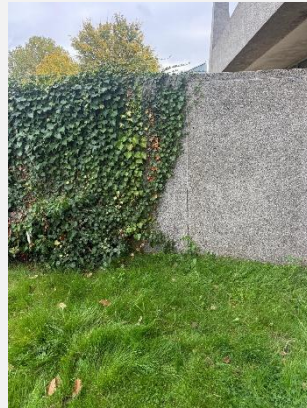
Hayes Park, Hillingdon, UB4 8FE

Sample 2: Wall 2 – Hayes Park Central

Before Cleaning



After Cleaning



Sample 3: Column 1 – Hayes Park Central

Before Cleaning



After Cleaning





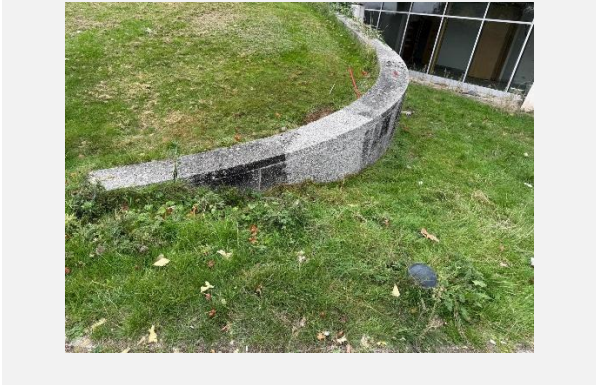
Hayes Park, Hillingdon, UB4 8FE

Sample 4: Wall 3 – Hayes Park South

Before Cleaning

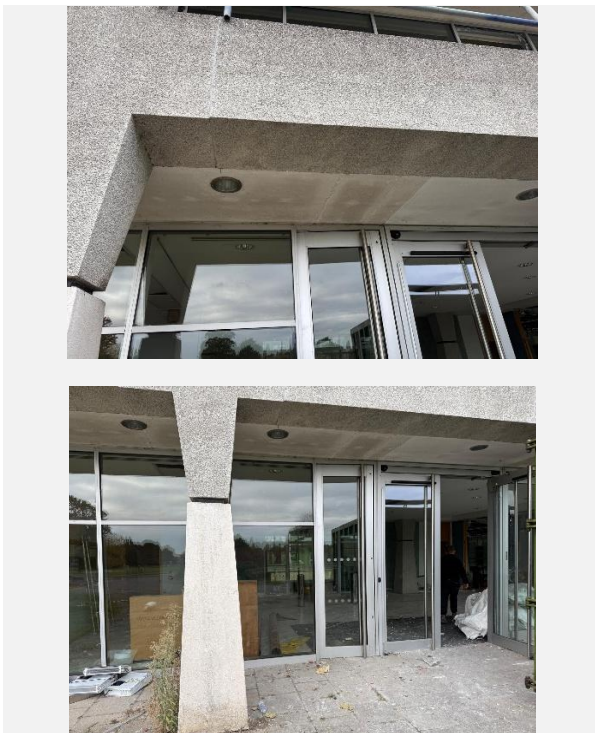


After Cleaning

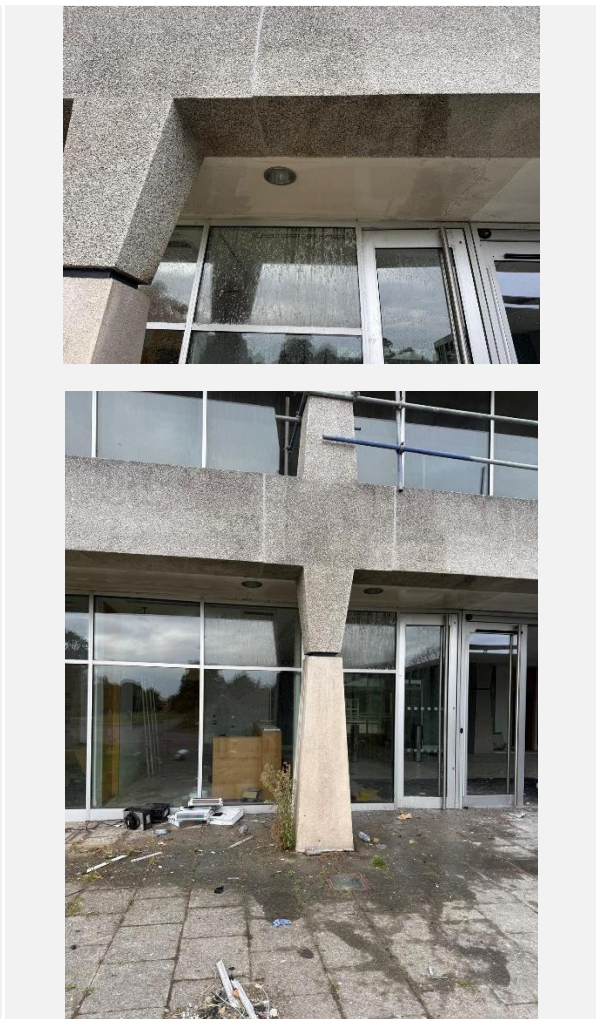


Sample 5: Column 2 + Soffit – Hayes Park South

Before Cleaning



After Cleaning

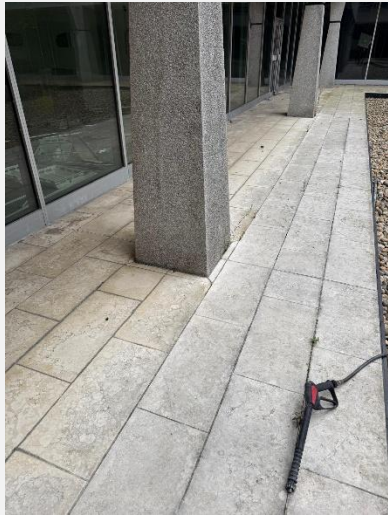




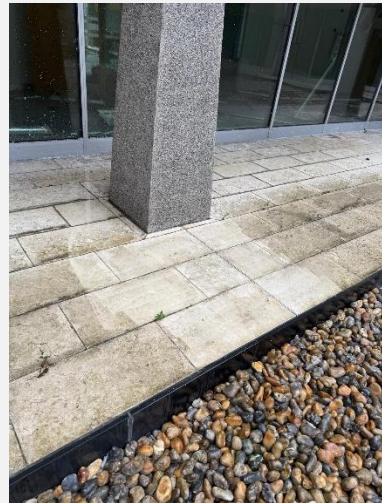
Hayes Park, Hillingdon, UB4 8FE

Sample 6: Internal Courtyard : Column, Soffit, Slab – Hayes Park South

Before Cleaning



After Cleaning





Hayes Park, Hillingdon, UB4 8FE

Notes

Small walls served as cleaning samples to demonstrate the DOFF's effectiveness on the same material as the main building, illustrating its potential results on a larger scale.

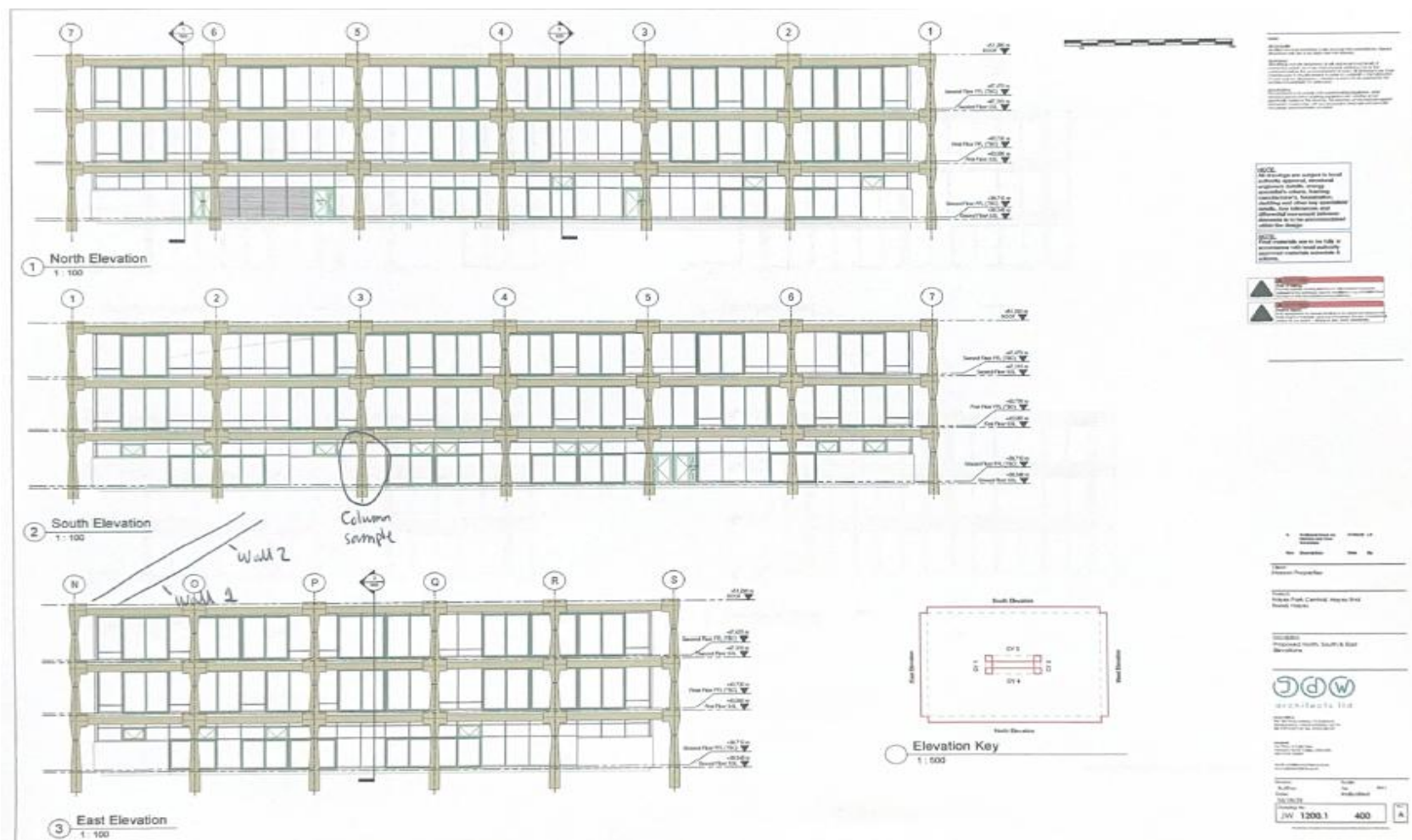
*Site layout and locations given below are indicative, and as accurate as possible without knowing the names of each elevation of the two buildings.

Site Layout and Drawing Plans

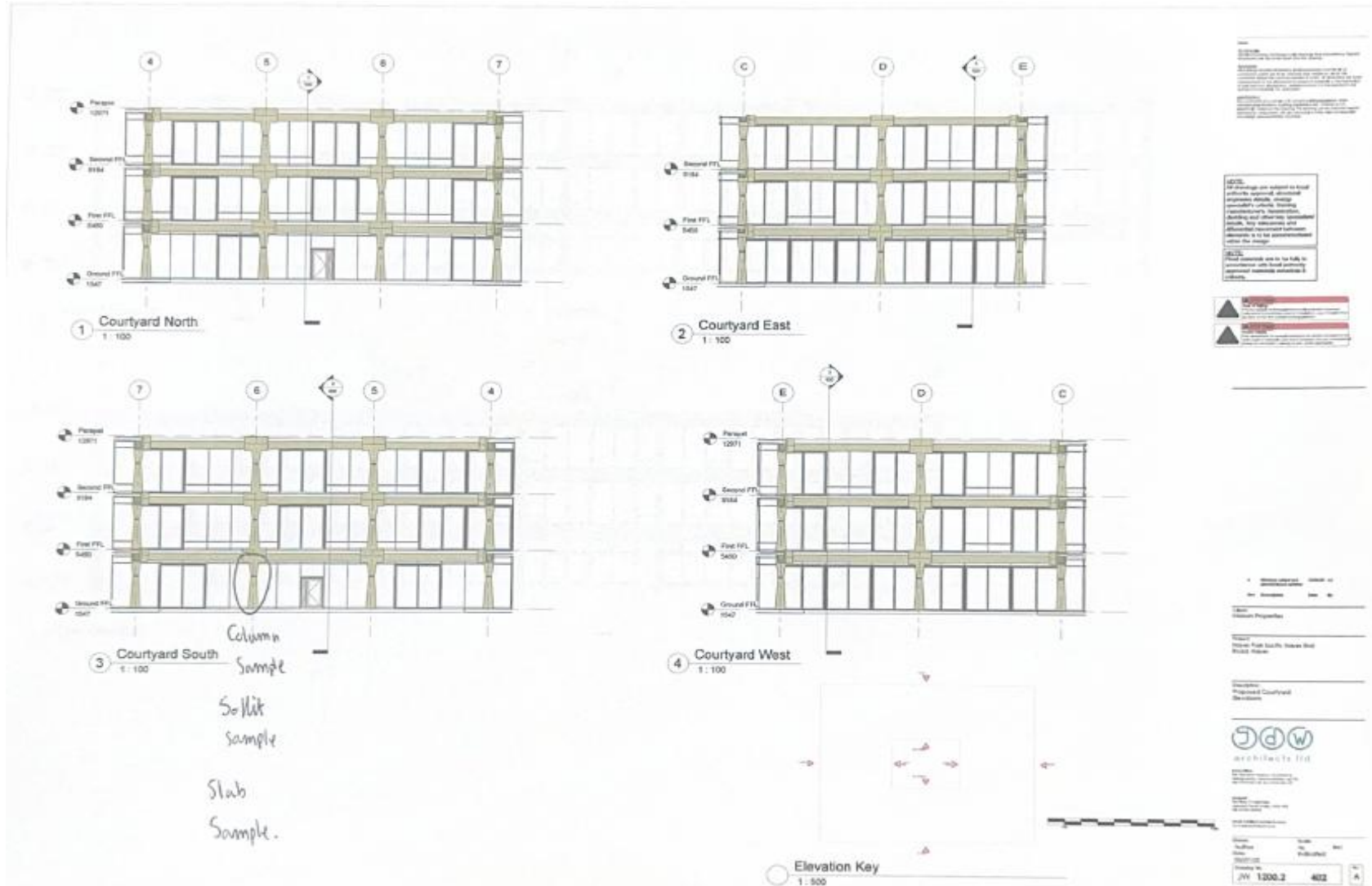


Site Layout Example

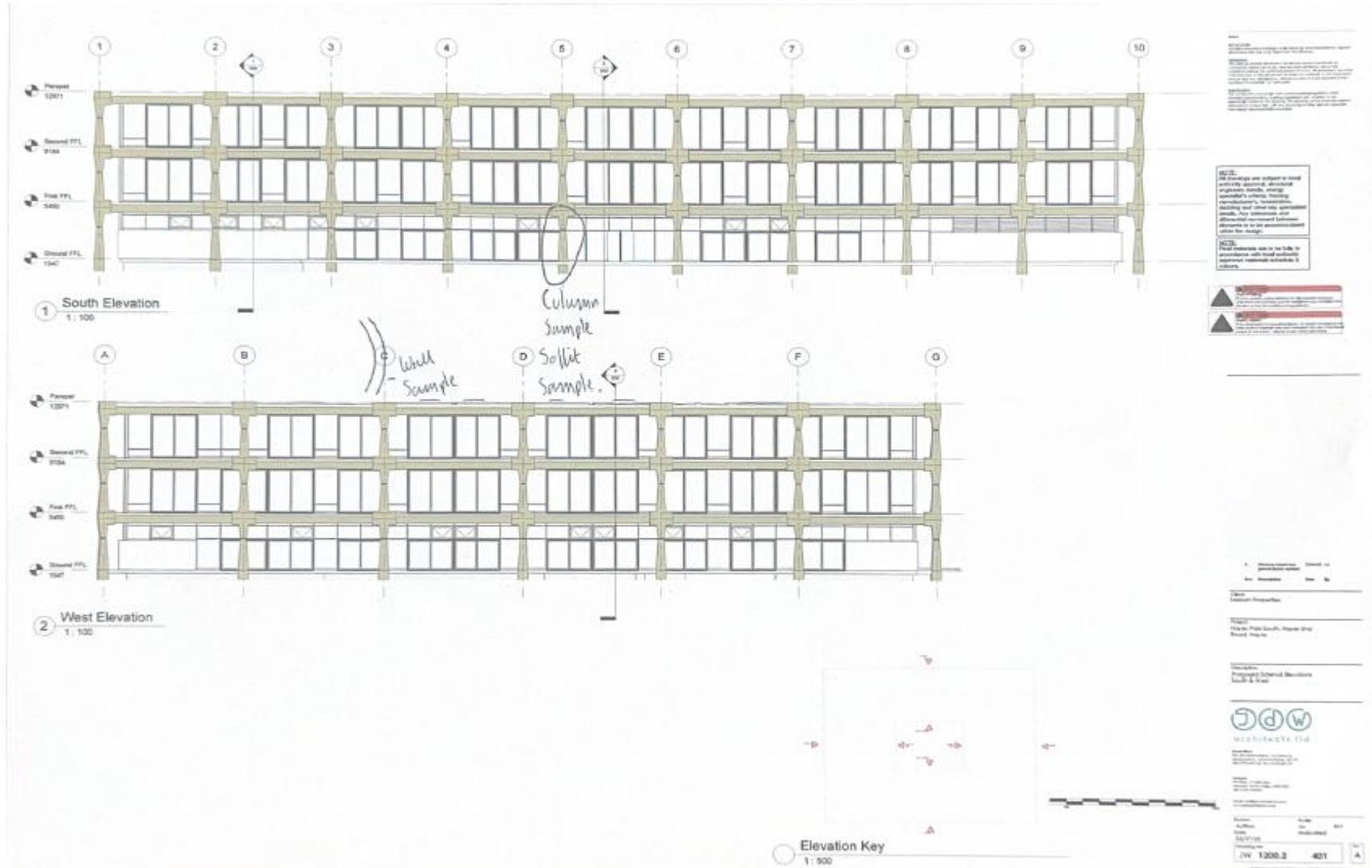
The below site layout illustrates the primary zones targeted for DOFF cleaning samples.



Hayes Park, Hillingdon, UB4 8FE



Hayes Park, Hillingdon, UB4 8FE





Hayes Park, Hillingdon, UB4 8FE

Conclusion

The samples and plans presented in this document demonstrate the efficiency and care involved in DOFF cleaning, which can be presented to the conservation planning team for comments and sign off.

Kind Regards

Concrete Renovations Ltd

01733 560362