

General Notes

No implied licence exists. This drawing should not be used to calculate areas for the purposes of valuation. Do not scale this drawing for construction purposes. All dimensions to be checked on site by the contractor and such dimensions to be their responsibility. All work must comply with relevant British Standards and Building Regulations requirements. Drawing errors and omissions to be reported to the architect.

Notes

MATERIAL KEY:

FAÇADE:

- F01 - Existing concrete frame - cleaned and repaired where required
- F02 - Rainscreen ceramic cladding with fluted profile (type 1 - fine grain)
- F03 - Rainscreen ceramic cladding with fluted profile (type 2 - large grain)
- F04 - Exterior grade timber panelling (Colour tbc)
- F05 - 1990's exposed structural columns with concrete finish to match existing
- F06 - New exposed structural columns with concrete finish to match existing
- F07 - Concrete fascia panel

GLAZING, WINDOWS & OPENINGS:

- G01 - Aluminium PPC coated curtain walling glazing system with low U value (silver mullion capping)
- G02 - Glass back painted insulated panel within aluminium PPC coated curtain system with silver mullion capping
- G03 - Aluminium PPC coated sliding door (dark grey)
- G04 - As G03
- G05 - Aluminium PPC coated top hung casement window (dark grey with silver mullion capping)
- G06 - Glazed door with floor pivot, Aluminium PPC top and bottom rail, push plate (dark grey)
- G07 - Aluminium PPC coated louvered facade panel (dark grey)
- G08 - Aluminium PPC coated louvered door (dark grey)
- G09 - Aluminium PPC coated fixed glazing window (dark grey)
- G10 - Aluminium PPC coated opening tilt glazing window (dark grey)
- G11 - Aluminium PPC coated double glazing door (dark grey)
- G12 - Aluminium PPC coated dry riser panel
- G13 - Solid timber door - exterior grade (colour to match surrounding cladding)
- G14 - Aluminium PPC coated leaf and half glazing door (dark grey)
- G15 - DDA compliant curved sliding door (dark grey)
- G16 - Solid panel with terracotta finish
- G17 - Solid panel with concrete finish

MISCELLANEOUS:

- M01 - Soffit board
- M02 - Flat top galvanised steel balustrade frame and rail (silver)
- M03 - Stainless steel mesh balustrade
- M04 - Galvanised steel painted vertical balustrade (silver)
- M05 - Lift and enclosure
- M06 - Existing retaining wall - repaired and cleaned where required
- M07 - Gabion retaining wall
- M08 - Proposed retaining wall

ROOF FIXTURE AND FITTINGS:

- R01 - Aluminium coping (silver)
- R02 - Photovoltaic panels
- R03 - Folding main safe rail
- R04 - Smoke vent
- R05 - Insulated roof deck with metal trims
- R06 - Lift overruns

- Landscape intersection at the elevational cut-line
- New exposed structural columns with concrete finish to match existing
- ▲ A/D

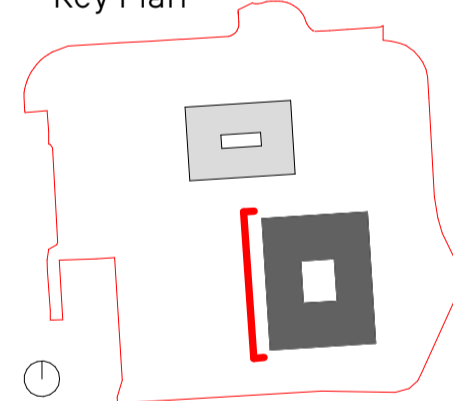
General Notes

No implied licence exists. This drawing should not be used to calculate areas for the purposes of valuation. Do not scale this drawing for construction purposes. All dimensions are to be checked on-site by the contractor and such dimensions are to be their responsibility. All work must comply with relevant British Standards and Building Regulations requirements. Drawing errors and omissions are to be reported to the architect.

For the purpose of this application, the existing building has been modeled in 3D, taken from 2D survey information provided by CSI, Surveys (Eveleigh) LTD and a structural model, designed by Whitby Wood. Due to the complexities of an existing building, the 3D model has been simplified to suit the scale of drawings required for the planning submission and design work stage. Please refer to the detailed drawings for the setting-out.

Scale 1:100

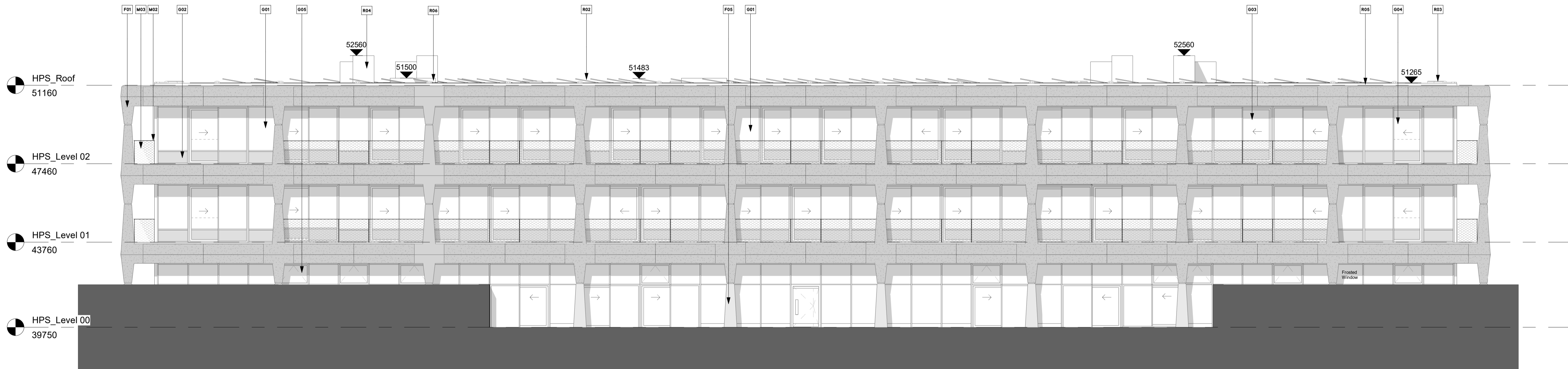
Key Plan



Status	For Planning
Project No.	0419
Project Name	Hayes Park
Drawing Title	HPS - West Elevation
Client	Shall Do Hayes Developments Limited
Scale @A1	1:100
Date	12/05/23
Drawn by	AB
Checked by	SEW

Rev	Date	Reason	Chk
P1	12/05/23	For Planning	SEW

Drawing Number	Rev
0419-SEW-HS-ZZ-DR-A-001308	P1



8 Hayes Park South - West Elevation
1:100