

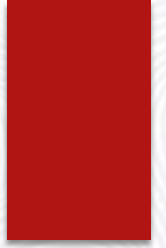
Taylor Wimpey

Reservation Checklist Presentation

Lancaster Square

Plot 15 – 3 Bed Ground Floor Apartment



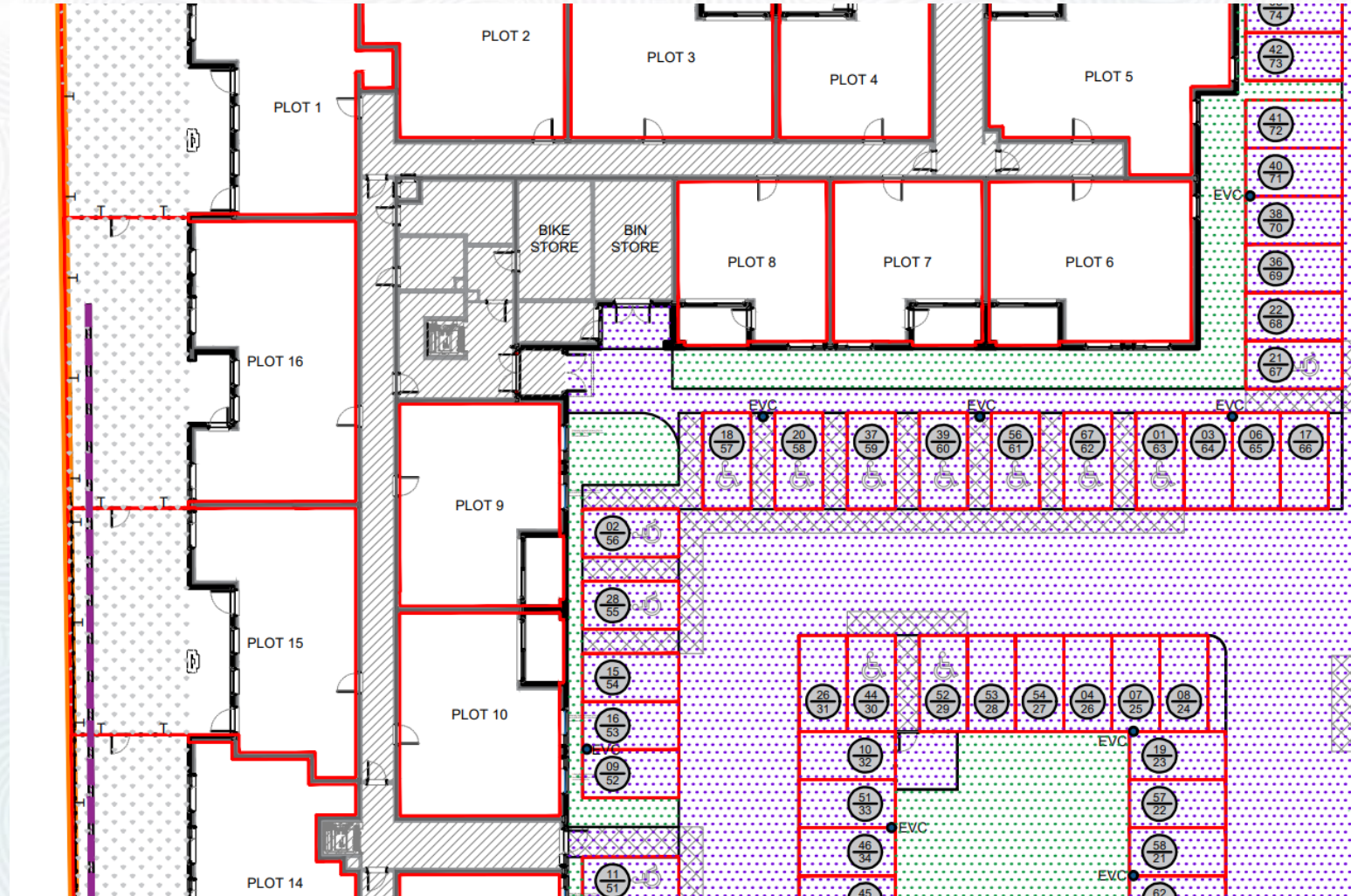


- 1. Development Layout**
- 2. Conveyance Plan**
- 3. Drainage Plan**
- 4. Soft Landscaping – Centre**
- 5. Soft Landscaping**
- 6. Hard Landscaping**
- 7. Elevation**
- 8. Kitchen**
- 9. Customer plan**
- 10. Heating Plan**
- 11. Customer Journey**

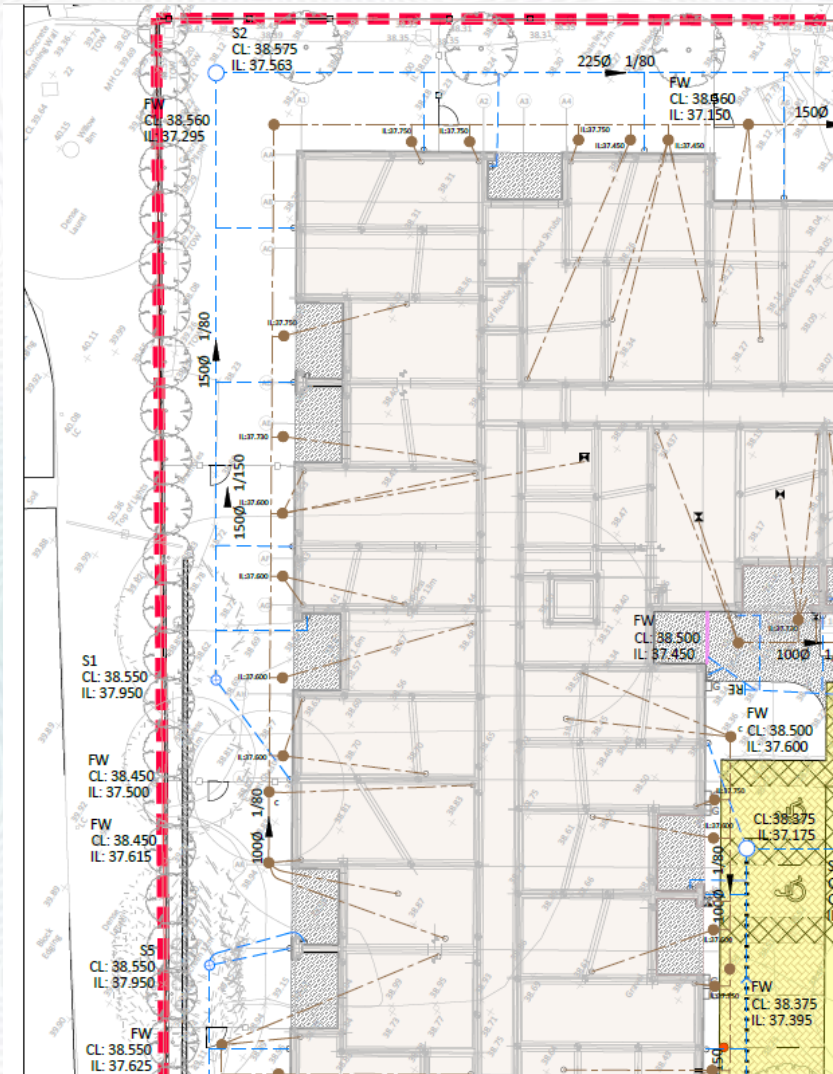
Development Layout



Conveyance Plan



Drainage Plan



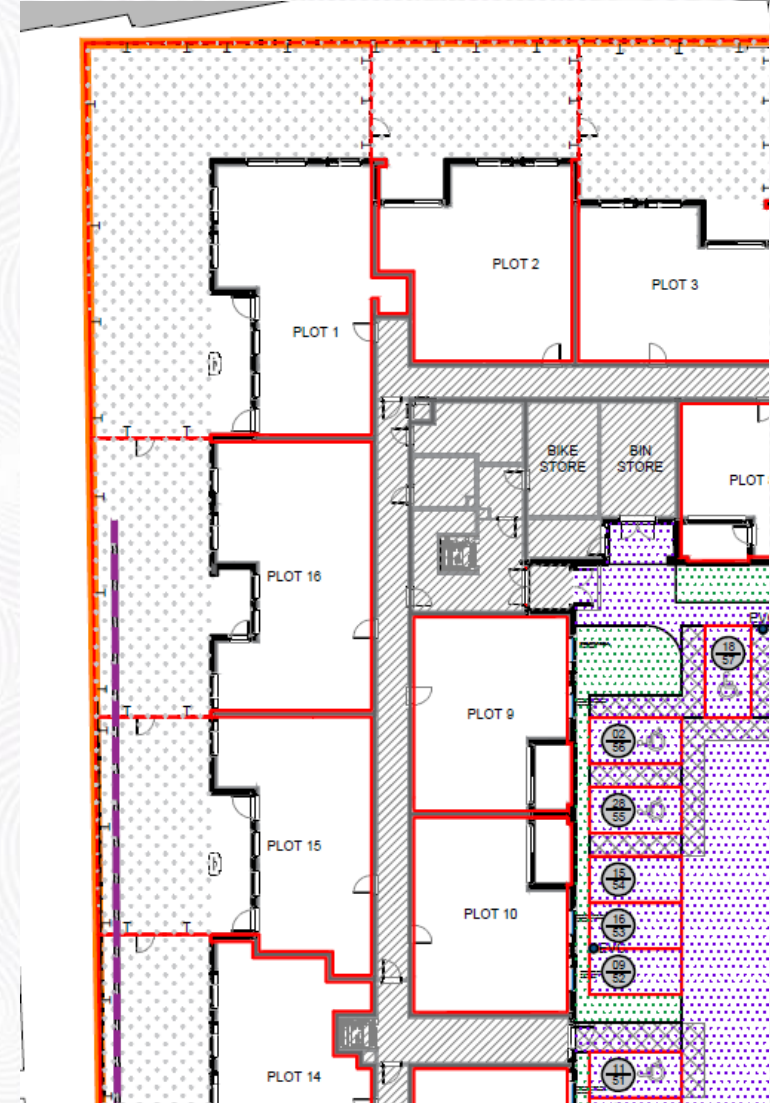
DRAINAGE GENERAL ARRANGEMENT

■ Structural
■ Civil
■ Geo-environmental

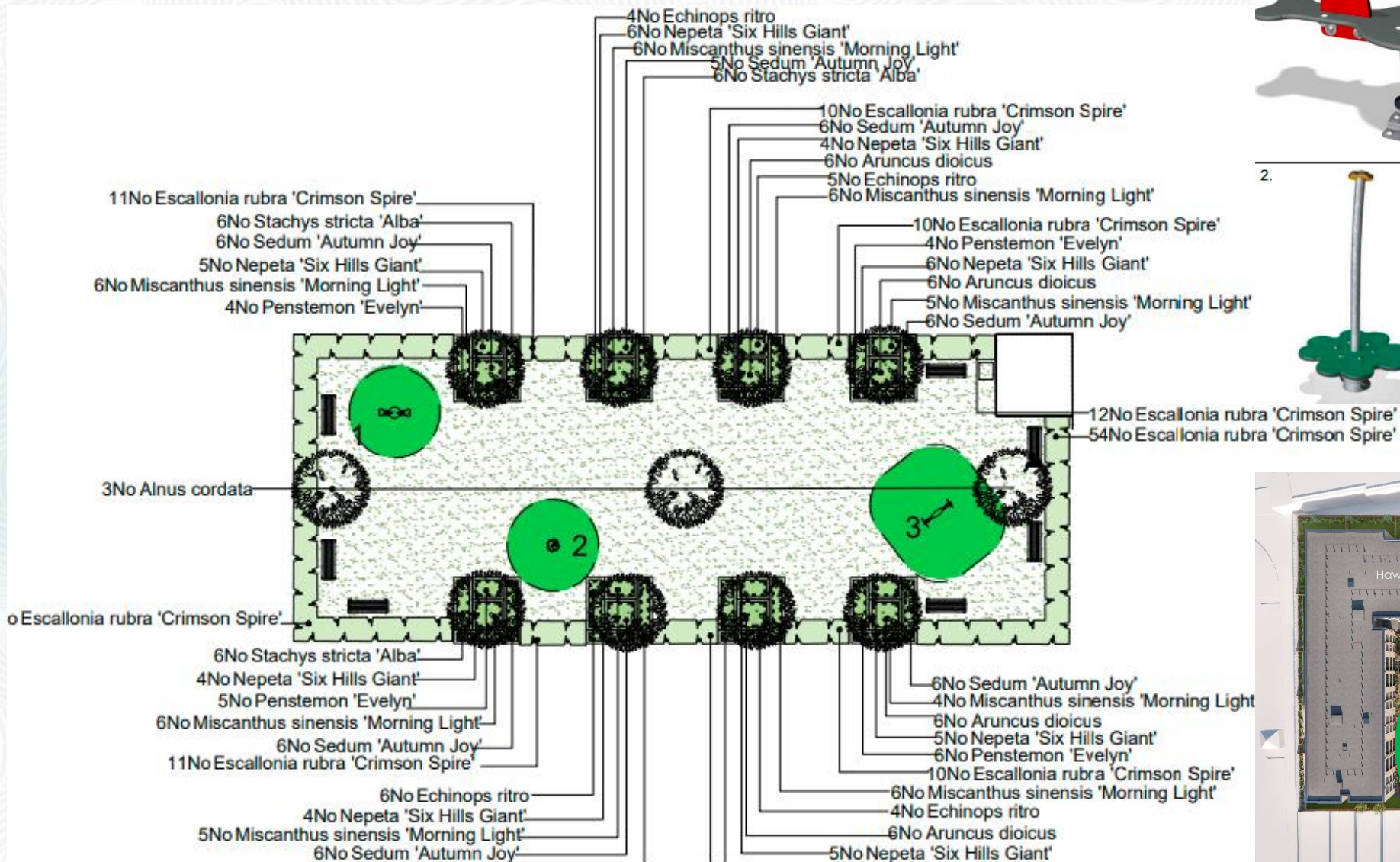
structa

London | Hemel Hempstead | Swindon | Warwick | www.structa.co.uk

Drawing No: 20699-06-1110 Revision: C6



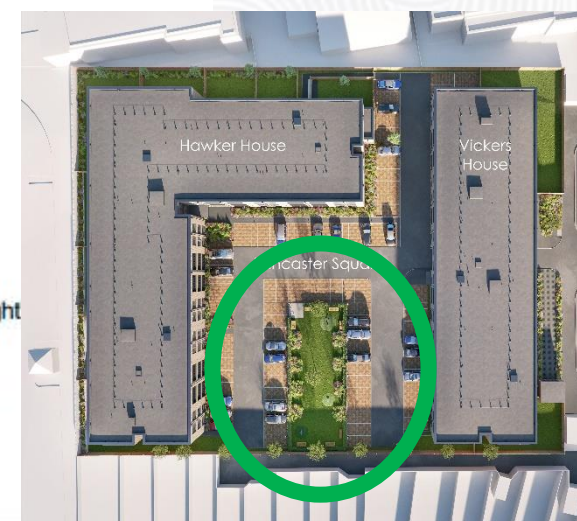
Soft Landscaping - Centre



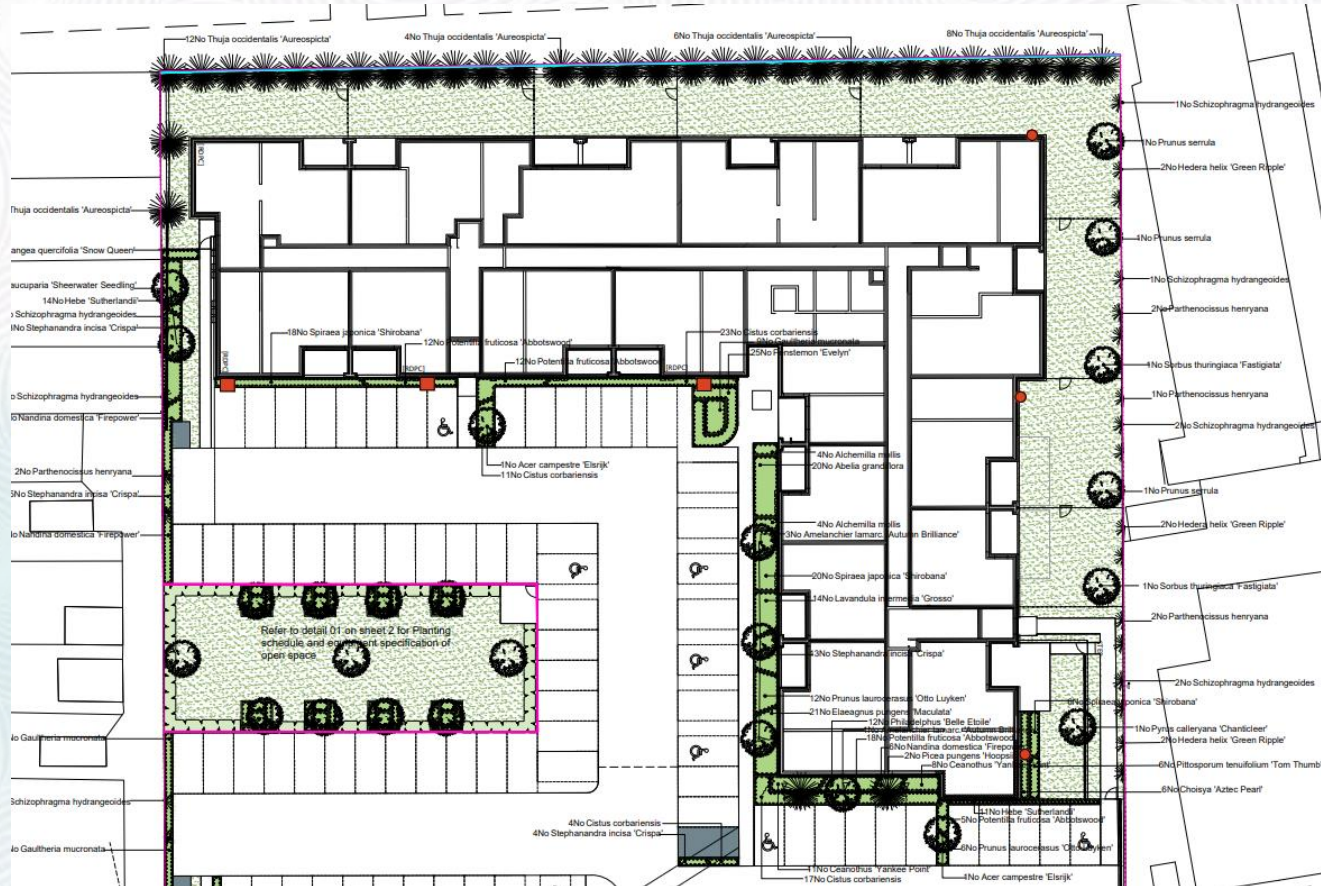
Detail 01 Open Space

Play Equipment












1. Pony Seesaw - M19001-01P
Providing social, rocking and imaginative play experiences
2+ years
2. Toddler Spika - M1910-3517P
Providing climbing and risk taking play experiences
2+ years
3. Sunflower - M95172-30P
Providing swinging & risk taking play experiences
2+ years



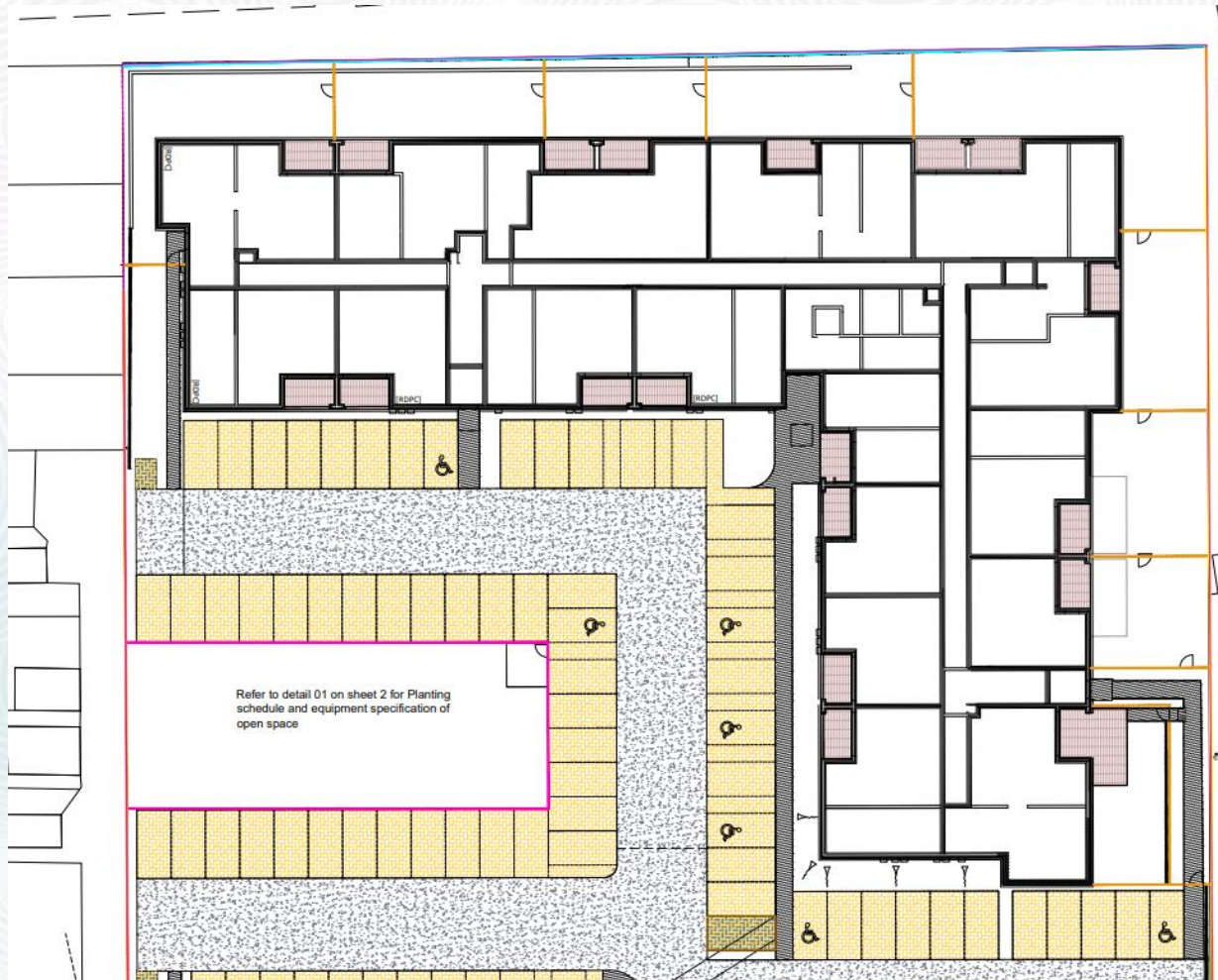
Soft Landscaping



Legend

-  Existing trees to be retained and protected during construction
-  Proposed tree planting within hard landscape. See detail A1 A2 on sheet 2
-  Proposed tree planting within soft landscape. See detail B1 B2 on sheet 2
-  Proposed coniferous tree planting within soft landscape. See detail C1 C2 on sheet 2
-  Proposed specimen shrub planting to receive short angular staking on half standards with expandable tree ties.
-  Proposed climbing plants to be trained up adjacent wall/ fence with galvanised wires and hook set 250mm apart with support canes removed prior to planting
-  Proposed hedge planting to be planted in a double staggered row 300mm apart and at 500mm centres in each row. To be maintained at 1.2m height
-  Proposed shrub planting to receive 75mm bark mulch after planting operations
-  Proposed grass areas to receive good quality amenity grass turves laid in line with good horticultural practices
-  Proposed benches to be Broxap Ingleby fixed bench seat - 2040x480x440
Bin to be Okehampton redwood litter bin
-  Proposed bonded rubber mulch in green as supplied by Play Bark or similar

Taylor Wimpey Hard Landscaping



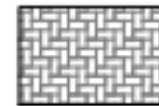
Legend



Existing trees to be retained and protected during construction



Proposed carriageway construction to be asphalt



Proposed parking court to be Brett Alpha in Charcoal as available from Brett Paving or similar, laid in herringbone formation



Proposed parking spaces to be Brett Alpha in Autumn Gold as available from Brett Paving or similar, laid in herringbone formation

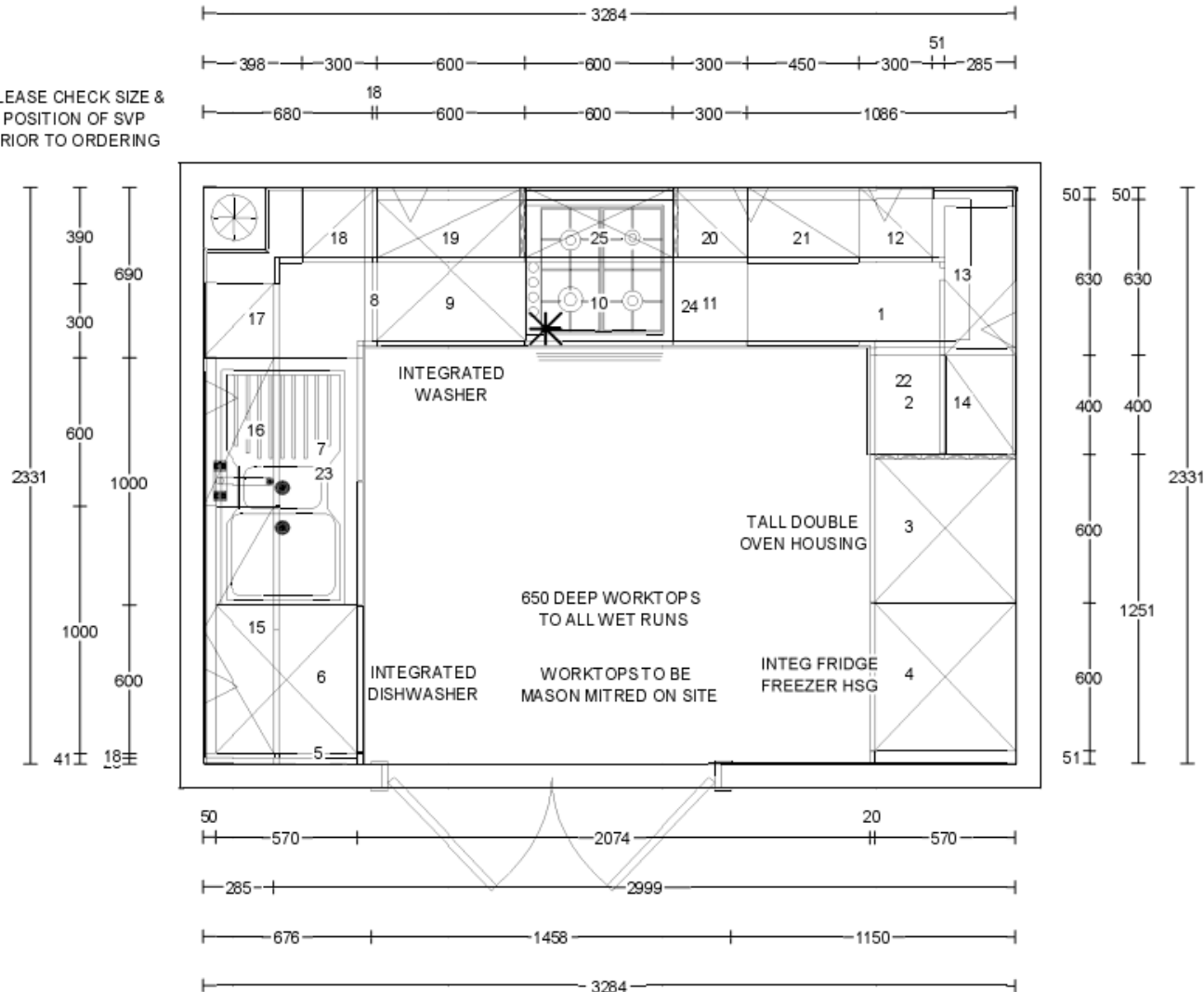


Proposed footpaths to be Brett Piatto in Dark Granite as available from Brett Paving or similar, laid in stacker bond formation

Twwl2309712

Kitchen Plan

PLEASE CHECK SIZE &
POSITION OF SVP
PRIOR TO ORDERING



Drawing No: 518855_G

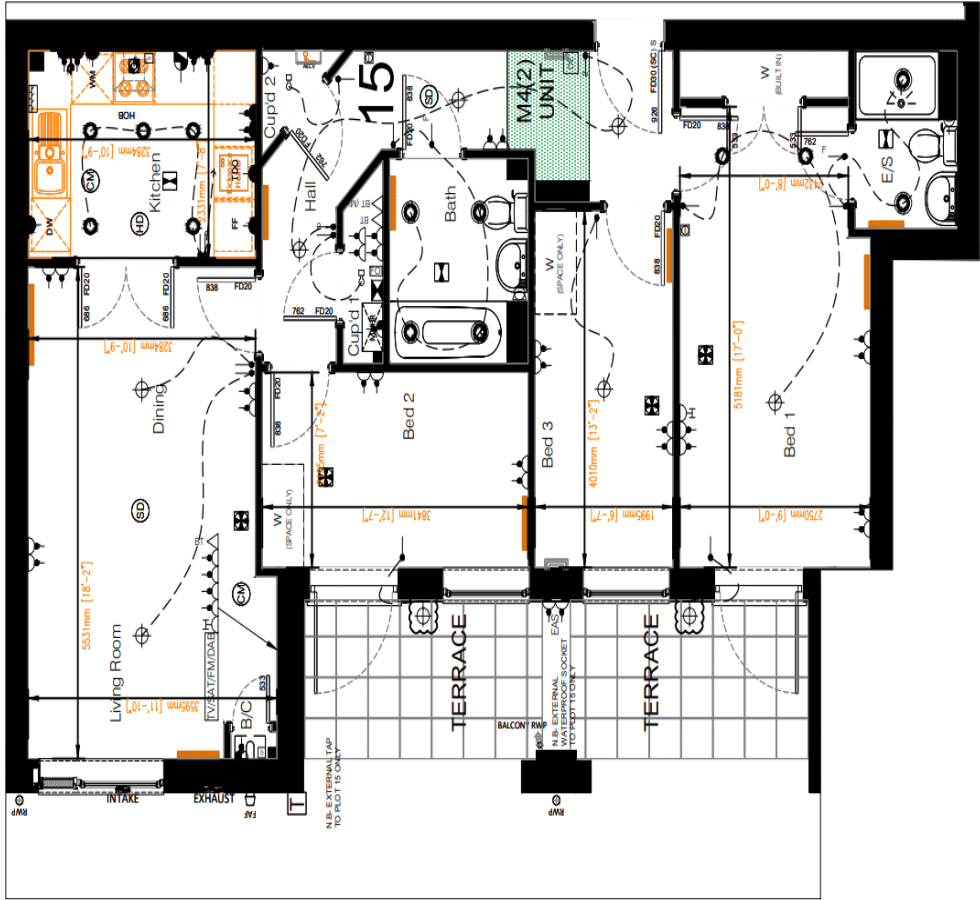
Revision No: G

Customer Plan

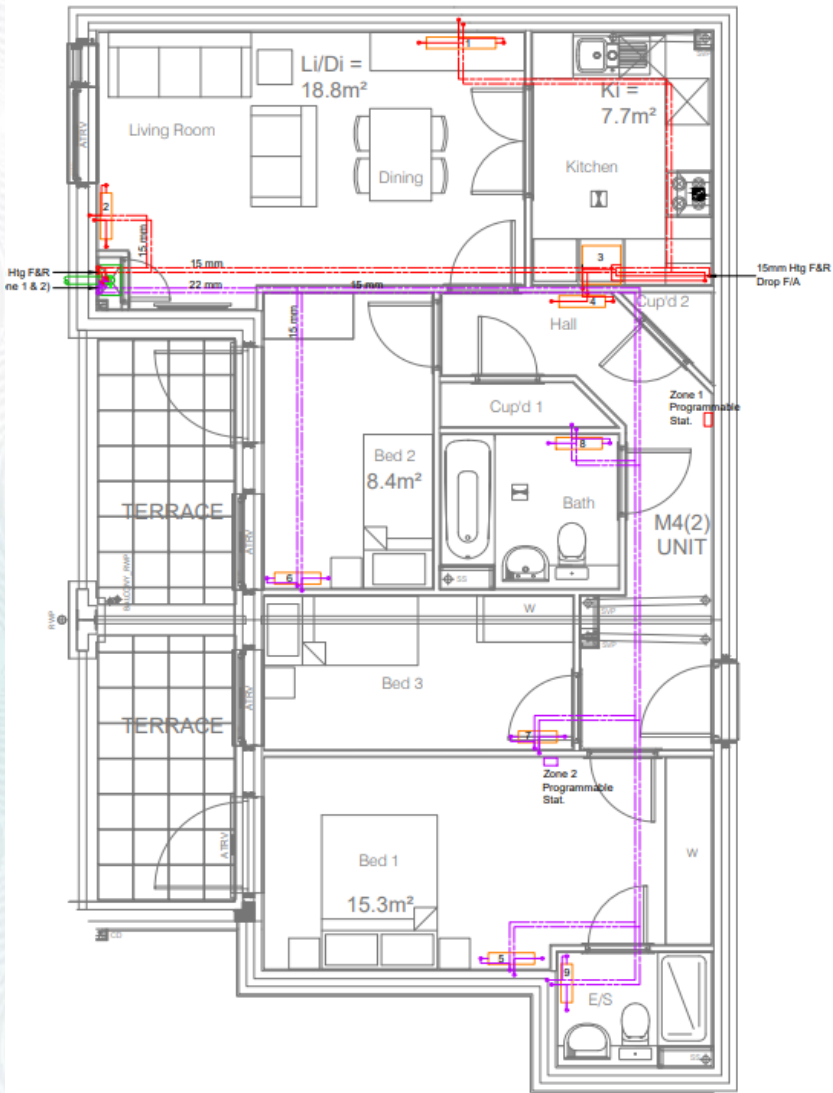
ELECTRICAL SYMBOLS LEGEND	
SOCKETS	
	Deta Slimline - Single SSO
	Deta Slimline - Double SSO
	Deta Slimline - Double SSO with USB charging socket.
	Deta Slimline - Double SSO (Above worktop)
	Deta Slimline - Double SSO (Above worktop) with USB charging socket
	13 AMP Switched Fused Spur
	Hard wired 13 amp un-switched fused spur
	Data Shaver Socket - As Site Spec
	Double External Armoured Socket
	Triplex TV Sat FMDAB SKY Q Compatible
	Television Point TV/FMDAB SKY Q Compatible
	Telephone Point BT(M) = Master Point
LIGHT FIXTURES	
	Deta Decorator Ceiling Pendant Light Fitting
	Deta non- dimmable LED downlights - See TW Spec
	Deta non- dimmable LED downlights (Waterproof) - See TW Spec
	Bayonet Light Fitting
	External Wall Light with PIR
	Bulkhead Light Fitting
	Deta Batten Holder (low energy).
SWITCHES	
	Deta Light Switch
	Deta Light Switch - 2 Way
	Deta Light Switch - 3 Way
	Deta Mechanical Vent Isolation Switch (Ensuites & Bathrooms)
	LED Pelmet Lighting Switch
	Cooker Control Panel with 13 AMP Spur Unit for Extractor
	Multi grid switch above worktop controlling unswitched sockets below worktop & Fan boost switch
SAFETY & SECURITY	
	Deta Smoke Detector/Alarm - mains operated inter-linked with battery back-up
	Deta Heat Detector/Alarm - mains operated inter-linked with battery back-up
	Honeywell Carbon Monoxide/Alarm - mains operated inter-linked with battery back-up
	Door Entry - To Project Spec
	FOI Termination Box - To Project Spec

Drawing No.	Revision
915	C1

SERVICES	
	Hager metal Consumer Unit
	External Tap
	Greenwood Airvac fan Mechanical Vent / Supply
	204x60mm Insulated intake/Exhaust Grille
	Recirculating Cooker Hood
	Honeywell programmable Room Thermostat
	Radiator (Size Indicative, refer to M&E Layouts)
	Heated Towel Rail (Size Indicative, refer to M&E Layouts)
	AECV positioned min 600mm above FFL in accessible location with 300mm Access Panel and boxing where required.
	Gas Point
	Dropped ceiling for MVHR Ductwork



Heating Plan



Flow and Return F&R

Hot Water Supply HWS

Cold Water Supply CWS

Mains Cold Water MCWS

To Above T/A

To Below T/B

From Above F/A

From Below F/B

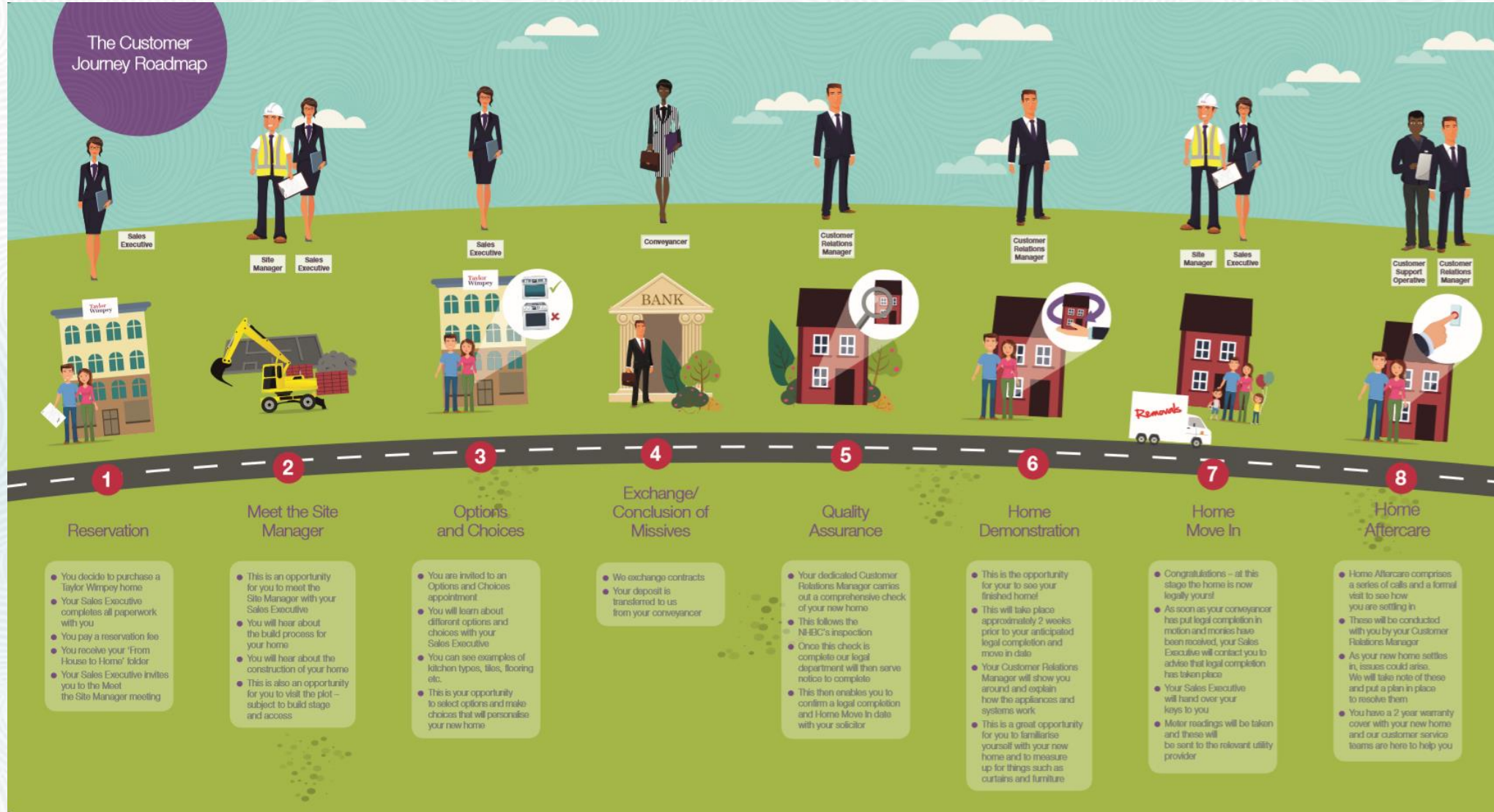
Primary Piping - 

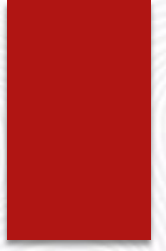
Zone 1 F&R Pipes - 

Zone 2 F&R Pipes - 

DRAWING No. 15428-12

Taylor Wimpey The Customer Journey





**Congratulations &
thank you for completing your
reservation with us!**