

Proposed Hard Landscaping



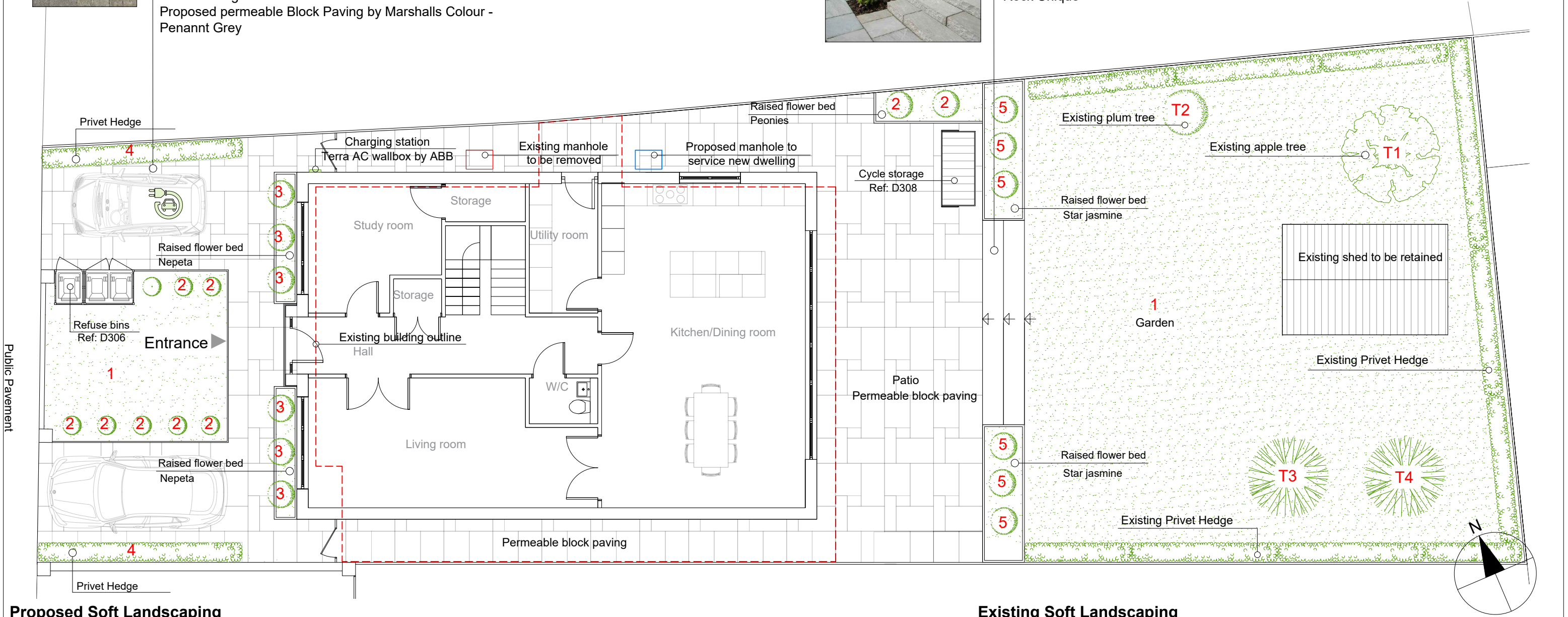
Paved walkway

All the existing hardpaving should be replaced with Drivesett Tegula Priora  
Proposed permeable Block Paving by Marshalls Colour - Penannt Grey



Sandstone steps to the garden

Grey Sandstone Steps provided by Rock Unique



Proposed Soft Landscaping



1. Travis Perkins, Rolawn medallion finest exterior multi purpose grass turf 1msq roll



2. Peonies  
Type: Paeonia  
Size: 3-5 feet  
Colour: pink roses  
The peonies are shrubby plants with permanent woody stems. They begin flowering in late spring.



3. Nepeta, 40cm x 60cm  
Type: Perennials  
Size: 40cm-60cm  
A low maintenance, drought tolerant, deer resistant, long blooming, wildlife friendly perennial that looks great all season long.



4. Privet hedge  
Type: Ligustrum  
Size: 1,5m  
Privet hedging is popular for its dense foliage that not only offers privacy, but also protects against pollution.



5. Star jasmine  
Type: Trachelospermum Jasminoides  
Size: 60cm  
Colour: white  
Star jasmine is a woody, evergreen climber with rich, dark green leaves which turn bronze in winter. From mid- to late summer, pure white, fragrant flowers are produced.



T3 & T4. Rowan trees  
Type: Sorbus aucuparia  
Common Name: Rowan tree  
Size: 12-14cm girth tree  
The tree would be supplied as a 12-14cm girth tree, at a minimum height of 2.5m and container grown. Planting would take place during the planting season (between November and the end of February).

Existing Soft Landscaping

Cod Number	Tree Name (species)	Ht (m)	Comments	Number of tree	Category	
T1	Apple tree	5	No notable defects	1	B	Trees of moderate quality with an estimated remaining life expectancy of at least 40 years
T2	Plum tree	3	No notable defects	1	B	Trees of moderate quality with an estimated remaining life expectancy of at least 40 years



REVISIONS

REV	DATE	DESCRIPTION	BY	CH

PROJECT TITLE  
1 Burford Close

DATE  
Jul 2022

REVISION

DRAWING TITLE  
Proposed - Landscape Plan  
CLIENT

DRAWING No.  
BRFRD-D305

SCALE @ A3  
1:100