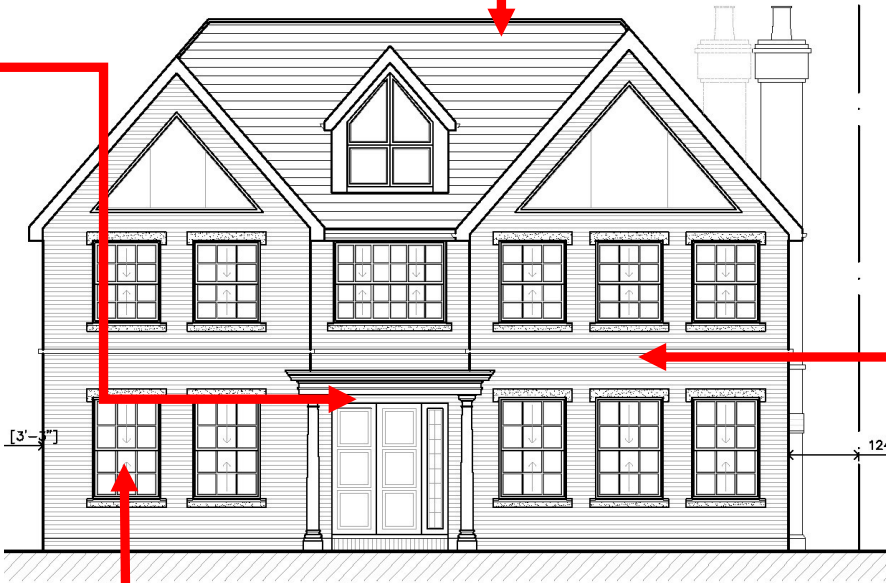


Discharge of Condition 3—Materials



Windows to be double glazed painted timber Georgian sashes in white to match images
Front door to be timber panelled painted black.

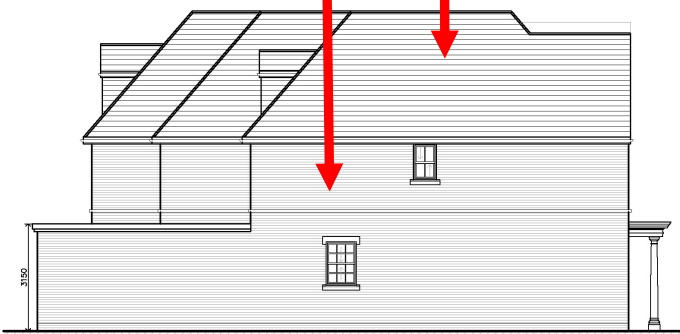


PROPOSED FRONT ELEVATION

Stone detailing to be reconstituted stone by Haddonstone off-white coloured to match images



PROPOSED REAR ELEVATION



PROPOSED SIDE ELEVATION



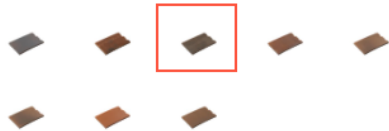
PROPOSED SIDE ELEVATION



Redland

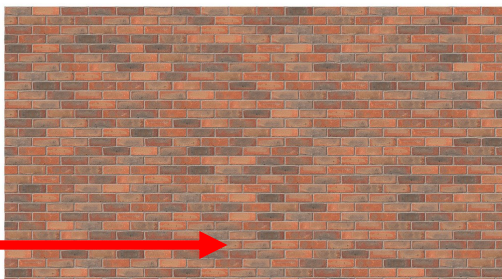
ROSEMARY CLAY CLASSIC TILE

Colour: Dark Antique



Surface Finish: Smooth

Hamsey Mixed Stock



Product Information

Ibstock Code:	A4517A
Type:	Stock
Facing Description:	Sandfaced
Dry Brick Weight (kg):	2.2kg
Pack Quantity:	370
Packaging (standard):	Banded (Plastic)
Factory:	Chailey