

notes

All plans, sections & elevations are based on measured readings and any scaled dimension should not be relied upon to give an accurate measurement. Any discrepancies to be reported immediately. To be read in conjunction with Structural Engineers' drawings and Mechanical and Electrical drawings

KEY PLAN

External Materials

1.

Red facing brickwork (to LA approval)
2.

Grey facing brickwork (to LA approval)
3.

Aluminium Alitherm Heritage RAL 7016 powder coated windows & doors
4.

Grey powder coated aluminum capping
5.

Painted structural steel balconys
6.

Grey powder coated aluminium canopy
7.

Grey painted steel balustrading
8.

Brick movement joint
9.

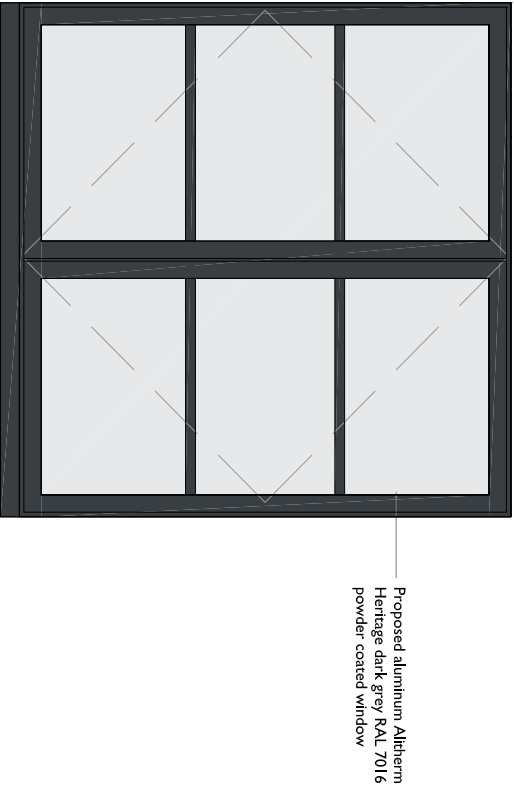
Raised brickwork band
10.

Lift overrun
11.

Smoke vent
12.

Flue
13.

Vent (MVHR)



3. TYPICAL WINDOW ELEVATION 1:10



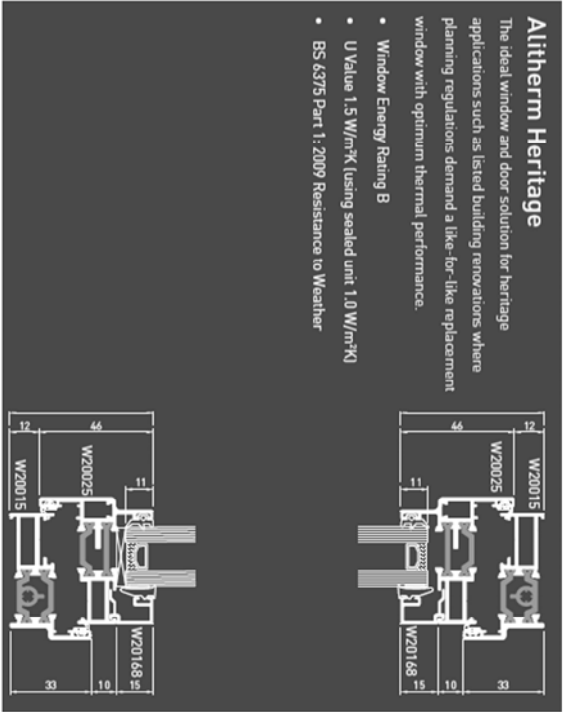
RED FACING BRICKWORK TO ELEVATION - Forum Burgundy red brick
- Brick movement joints to match colour of brick (8.)



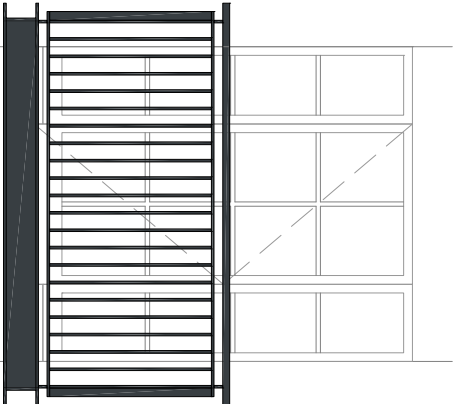
GREY FACING BRICKWORK TO ELEVATION - Cinder Cinder Coal grey brick
- Brick movement joints to match colour of brick (8.)



4. POWDER COATED (RAL 7016) ALUMINUM CAPPING TO PARAPETS



TECHNICAL DETAILS OF PROPOSED TYPICAL WINDOW SECTION PROFILES



5. PAINTED STRUCTURAL STEEL BALCONYS WITH GREY (RAL 7016) BALUSTRADE (7.)



6. POWDER COATED (RAL 7016) ALUMINUM CANOPY



9. RAISED BRICKWORK BAND DETAIL



PROTO - Flat (fenestra) + Duplex

Width of Bar	19mm / 26mm
Height of Bar	1.5mm
Standard Colour	9016
Spacer Colour	White / Black / Silver
Joint	Overlap

EXAMPLE IMAGE OF PROPOSED WINDOW GLAZING BARS - To be matched to window colour (RAL 7016)



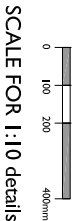
10. LIFT OVERRUN & SMOKE VENT (11.)
Example of grey single ply roof upstands and details



12. FLUE



13. VENT FOR MVHR SYSTEM
Terracotta upvc air brick



SCALE FOR 1:10 details

Revisions	Drawn By	Checked By
First issue	30/07/20	-
rev A	05/10/20	-
	GF	OL
	CN	OL

status	
PLANNING	
drawing no	rev
19T PL CON 04	A
drawing name	
TYPICAL WINDOW ELEVATION & EXTERNAL MATERIALS	
project	
THE CRANE , HAYES, UB3 4QS	
scale	
1:10@A1 / 1:20@A3	
urban mesh design ltd	
9 NEWBURY STREET, LONDON EC1A 7HU	
projects@urbanmesh.com	
T 0207600030	