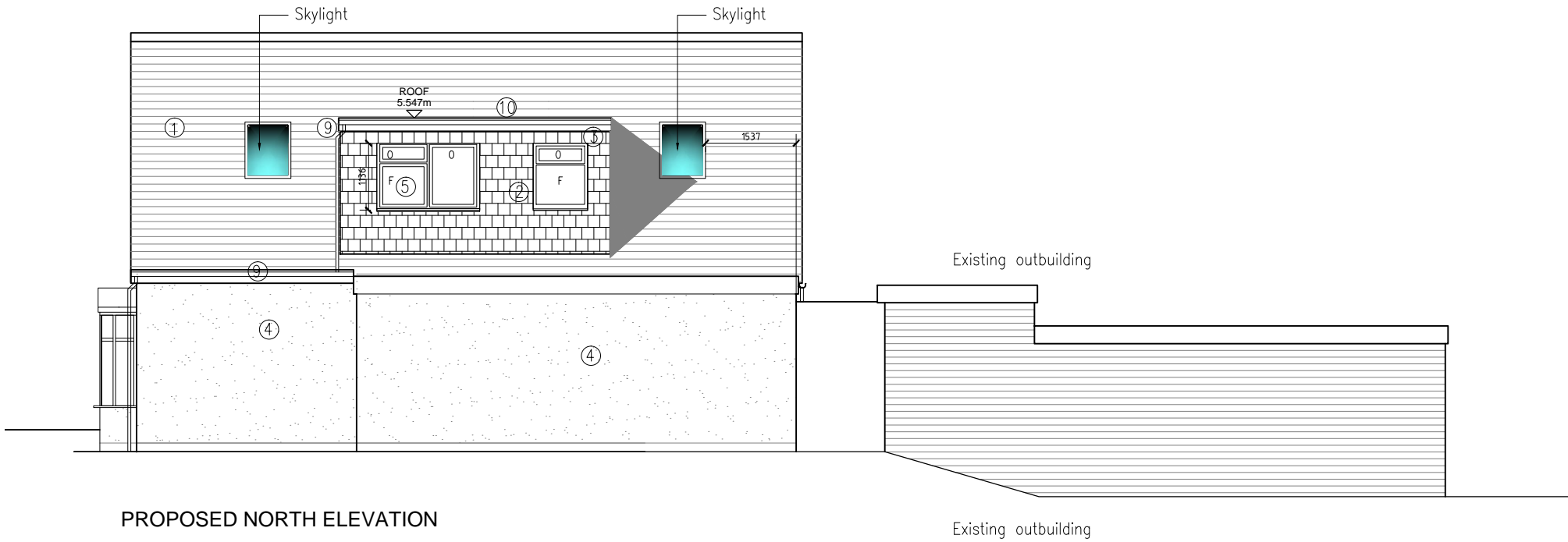
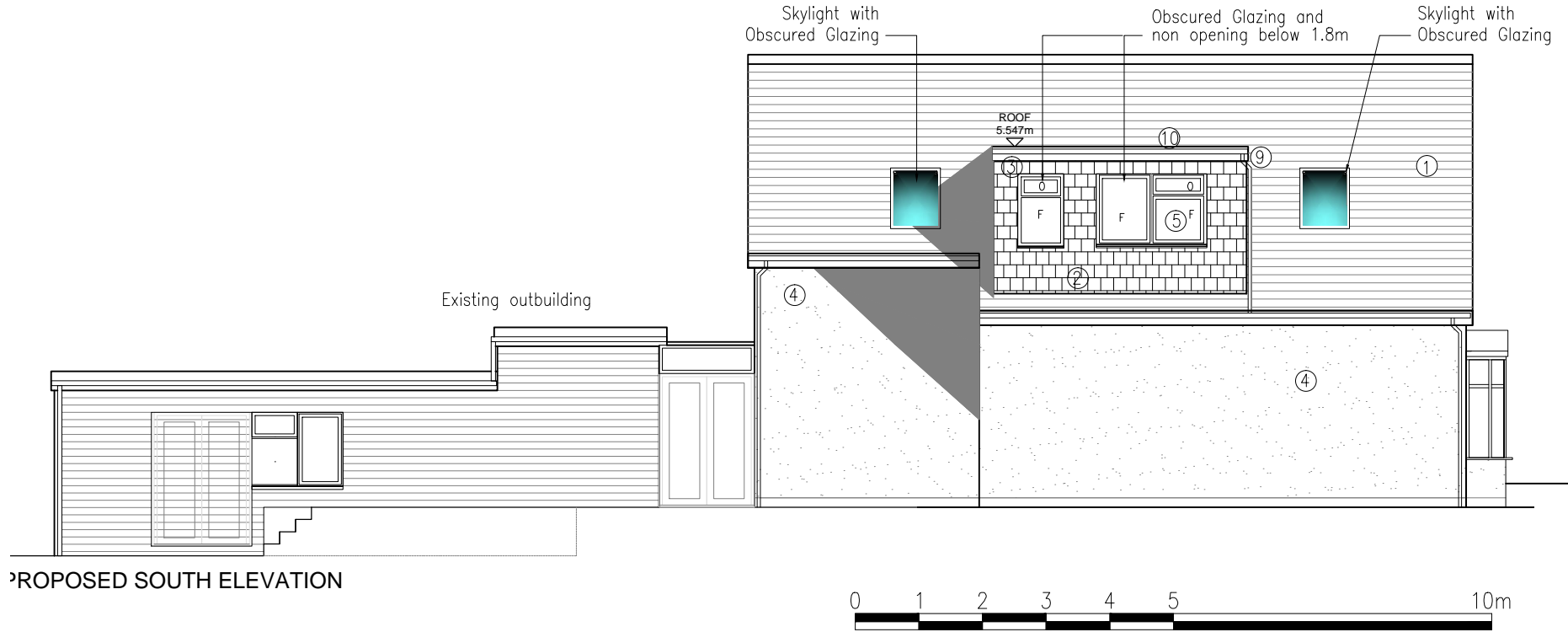


THIS DRAWING IS NOT TO BE SCALED.  
THE GENERAL CONTRACTOR IS TO CHECK ALL DIMENSIONS AND NOTIFY ARCHITECT OF ANY DISCREPANCIES OR OMISSIONS.



**Materials Key**

- ① Redland Double Roman tiles roof in Charcoal grey
- ② Charcoal Grey hanging tiles
- ③ Treated Timber fascia and soffit painted white
- ④ Off White Insulated Render
- ⑤ uPVC casement windows in white
- ⑥ PPC Aluminium Doors in Anthracite Grey
- ⑦ French Doors with side glazed panels in white
- ⑧ Glass balustrade with stainless steel hand rail
- ⑨ Black uPVC Rainwater gutter and downpipes
- ⑩ GRP roof in grey
- ⑪ Fixed Glazing



B amended to As Built		
REV.	DESCRIPTION	DATE
DRG NO 2314 PL08		
REV.		