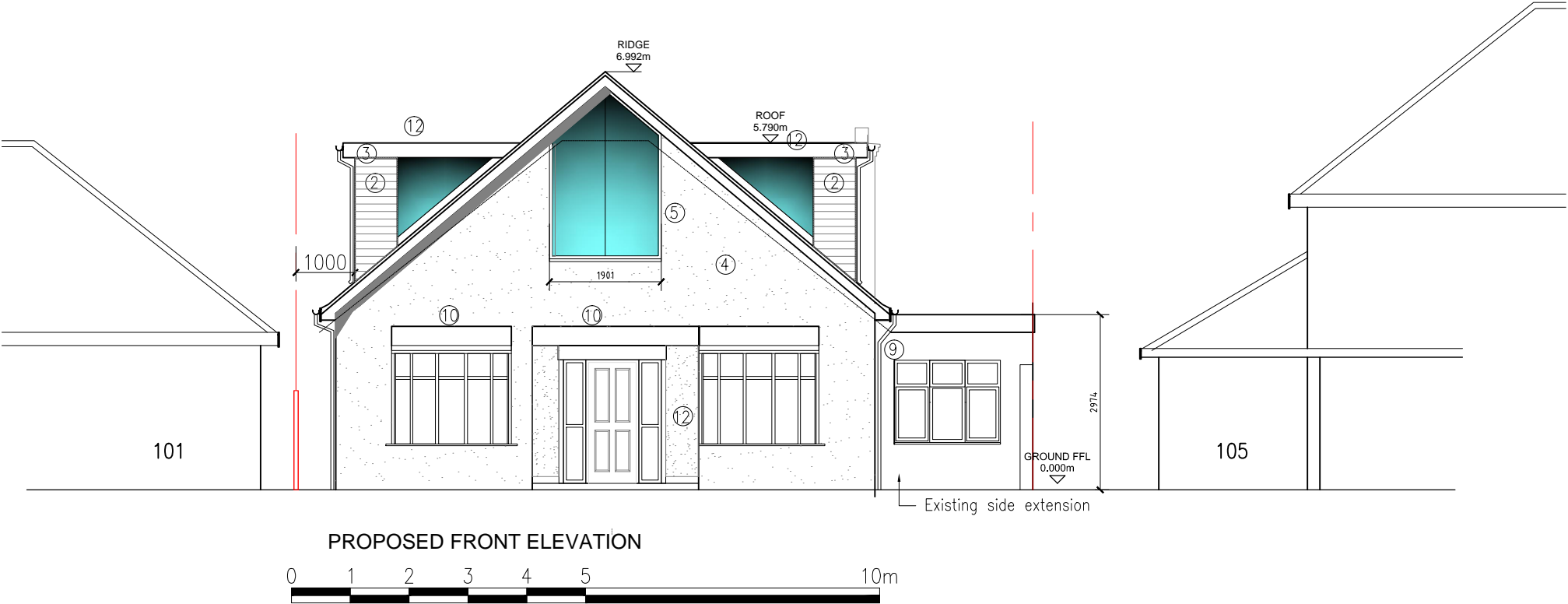


THIS DRAWING IS NOT TO BE SCALED.
THE GENERAL CONTRACTOR IS TO CHECK ALL DIMENSIONS AND NOTIFY
ARCHITECT OF ANY DISCREPANCIES OR OMISSIONS.



- Materials Key**
- ① Redland Double Roman tiles roof in Charcoal grey
 - ② Charcoal Grey hanging tiles
 - ③ Treated Timber fascia and soffit painted white
 - ④ Off White Insulated Render
 - ⑤ uPVC casement windows in white
 - ⑥ PPC Aluminium Doors in Anthracite Grey
 - ⑦ French Doors with side glazed panels in white
 - ⑧ Glass balustrade with stainless steel hand rail
 - ⑨ Black uPVC Rainwater gutter and downpipes
 - ⑩ GRP roof in grey
 - ⑪ Fixed Glazing



B amended to As Built		
REV.	DESCRIPTION	DATE
2314 PL07		
REV.	B	