


Document Title	TMP	Prepared By	Jonathan McCusker	
Revision Number	01	Date	09/04/2025	

---

## Appendix 1.0

### G2 Partial Completion Documents





## Contents

- 1 Cover page
- 2 Contents
- 3 Handover strategy
- 4 Construction Phase – Access, Access control & site boundaries
- 5 Existing access/egress & emergency routes
- 6 Existing Emergency routes Block A & B
- 7 Existing Emergency routes Block D & E
- 8 Construction phase welfare and waste management
- 9 Construction phase storage
  
- 10 Handover 1 – Block D – Signal Building
- 11 Handover 1 – Block D Access/egress
- 12 Handover 1 – Block D Zone access & handover
- 13 Handover 1 – Block D Elevation handover
  
- 14 Handover 2 – Block B – Cardinal Building
- 15 Handover 2 – Block B Access/egress
- 16 Handover 2 – Block B Zone access & handover
- 17 Handover 2 – Block B Elevation handover
  
- 18 Handover 3 – Block C – Navigation Building
- 19 Handover 3 – Block C Access/egress
- 20 Handover 3 – Block C Zone access & handover
- 21 Handover 3 – Block C Elevation handover
  
- 22 Handover 4 – Block A – Vantage Building
- 23 Handover 4 – Block A Access/egress
- 24 Handover 4 – Block A Zone access & handover
- 25 Handover 4 – Block A Elevation handover
  
- 26 Handover 5 – Block E – Compass Building
- 27 Handover 5 – Block E Access/egress
- 28 Handover 5 – Block E Zone access & handover
- 29 Handover 5 – Block E Elevation handover

## High Point Village

## Handover Strategy

## Sectional completions

Below Dates are when all works in each block will be complete and a complete block handover or completion certificate can be sought.

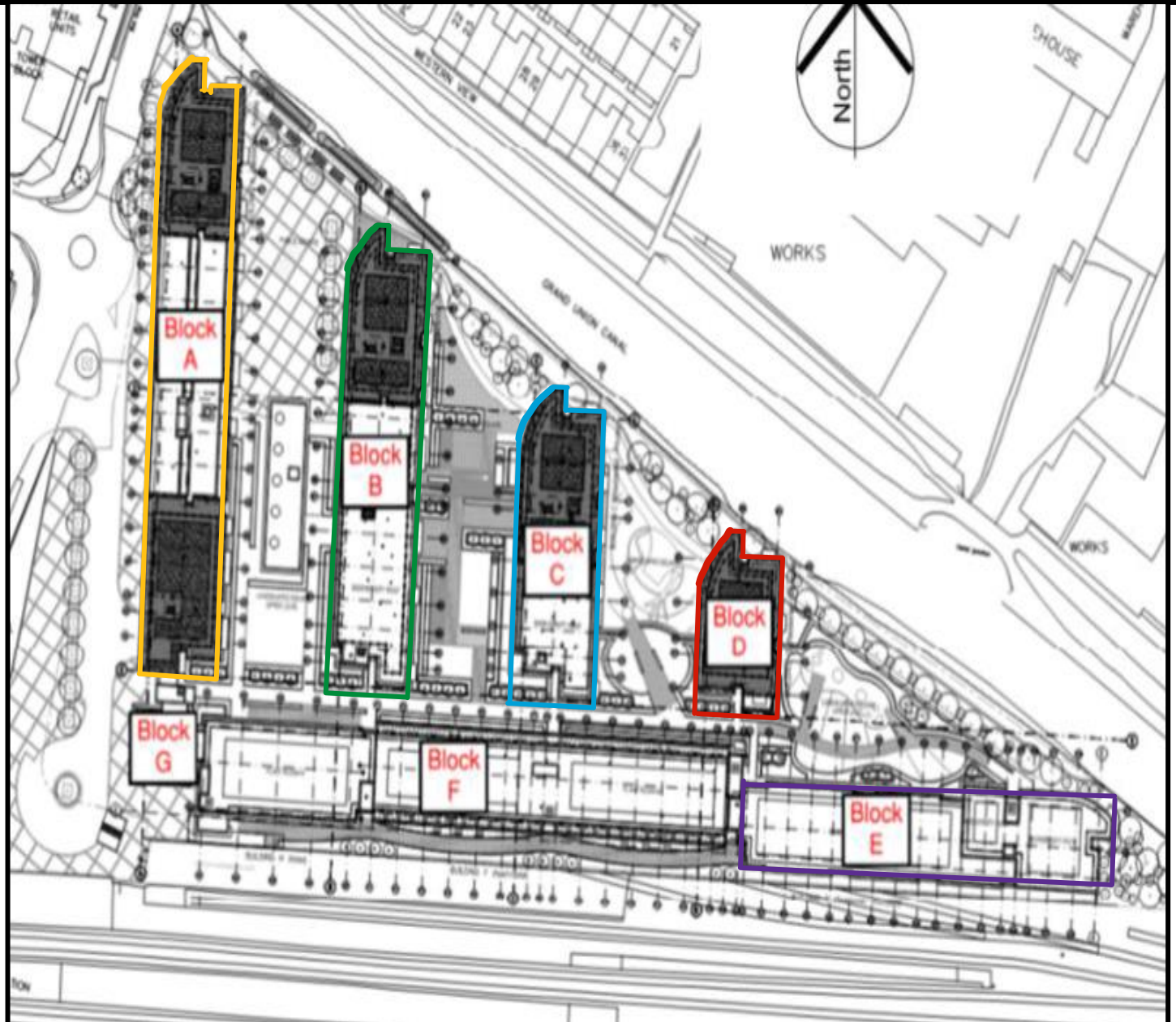
Handover 1 – Block D – 12/12/25

Handover 2 – Block B – 20/03/26

Handover 3 – Block C – 07/04/26

Handover 4 – Block A – 08/05/26

Handover 5 – Block E – 08/05/26



# Handover Strategy

## Construction Phase

Access, access control/Site boundaries

### Sectional completions

Handover 1 – Block D – 12/12/25

Handover 2 – Block B – 20/03/26

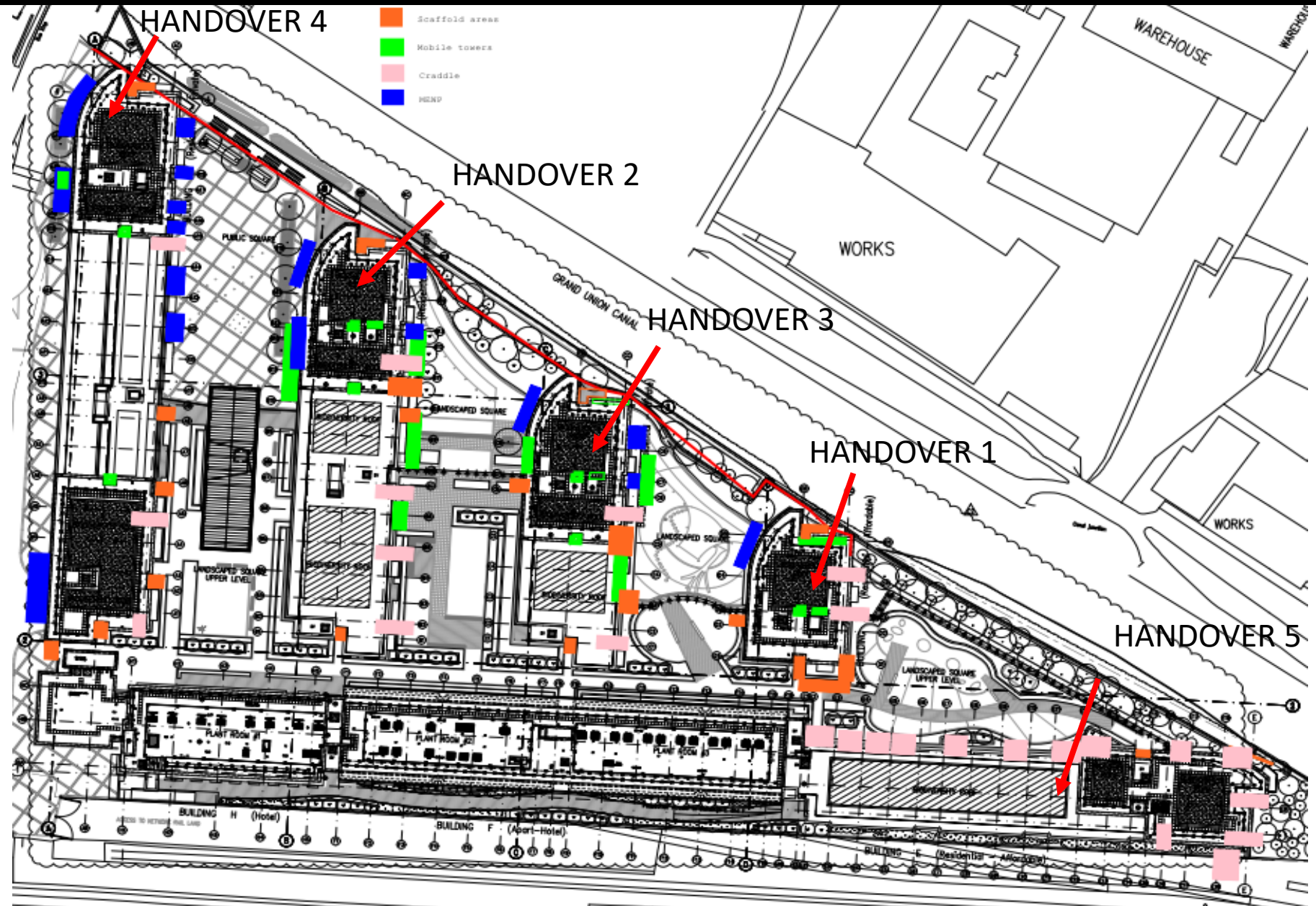
Handover 3 – Block C – 07/04/26

Handover 4 – Block A – 08/05/26

Handover 5 – Block E – 08/05/26

- Access to the working areas and access equipment (scaffold, mewps, cradles) will be restricted by:

- > Fencing off all areas and equipment
- > Scaffold ladders blocked off, mewp keys removed and mobile scaffold cleared at the end of each day.
- > Safety/Security checks being carried daily at the end of the shift by a competent person and sign off protocol to be used & recorded.



High Point Village

ballymore.

## Existing Access/Egress and Emergency routes







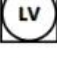

These zones will need to be maintained **AT ALL TIMES** for the duration of the works to allow access for emergency services.

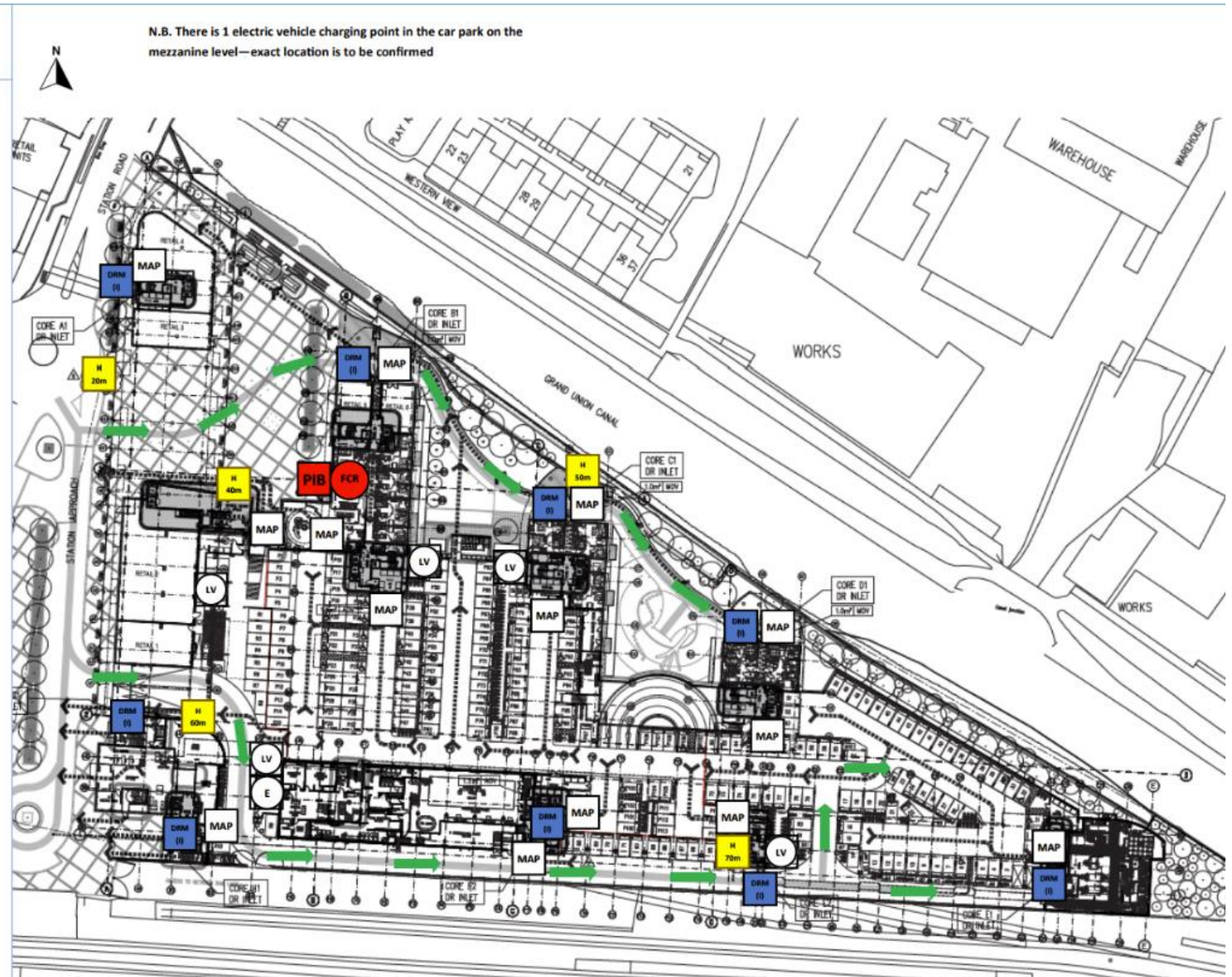
Any works above pathways must be kept clear when no works are taking place and must be clearable immediately in an emergency.

Commence 22/11/24 – Handover 28/05/26

- For works in areas surrounding access and emergency routes, a crash deck tunnel will be built to allow safe uninterrupted access and egress.
- Access to Fire rescue services routes, fire hydrants, dry risers, firefighting lifts are kept clear at ALL times
- Access to bin stores, lifts and other facilities are kept clear at ALL times
- Lifts will not be used for loading or removing material

### Symbols

	Fire Hydrant and furthest distance to Dry Riser Inlet
	Dry riser Main Inlet
	Main access point
	Property information box
	Fire Control Room
	Gas Stop Valve
	Electricity Isolation Point
	Access route



## Existing Access/Egress and Emergency routes

- Escape routes are not changed and are kept clear. Only locations shown below will have to be temporary obstructed during construction of crash decks and for remediation of return/reveal walls.
- Works in these buildings are sequenced in such way that only one route is temporary obstructed at any given time.
- These temporary arrangements will be notified to all relevant stakeholders as defined in the Communication Strategy (Please refer to part 26.0 of the Fire and Emergency Plan)
- Adequate signage will be put in place & the area will be cord off to ensure safe working zones.

Block A – South elevation – Crash deck construction 16 working hours, Render remedial 40 working hours

Block B- North timber reveals 40 working hours, South render 40 working hours Crash deck construction 16 working hours

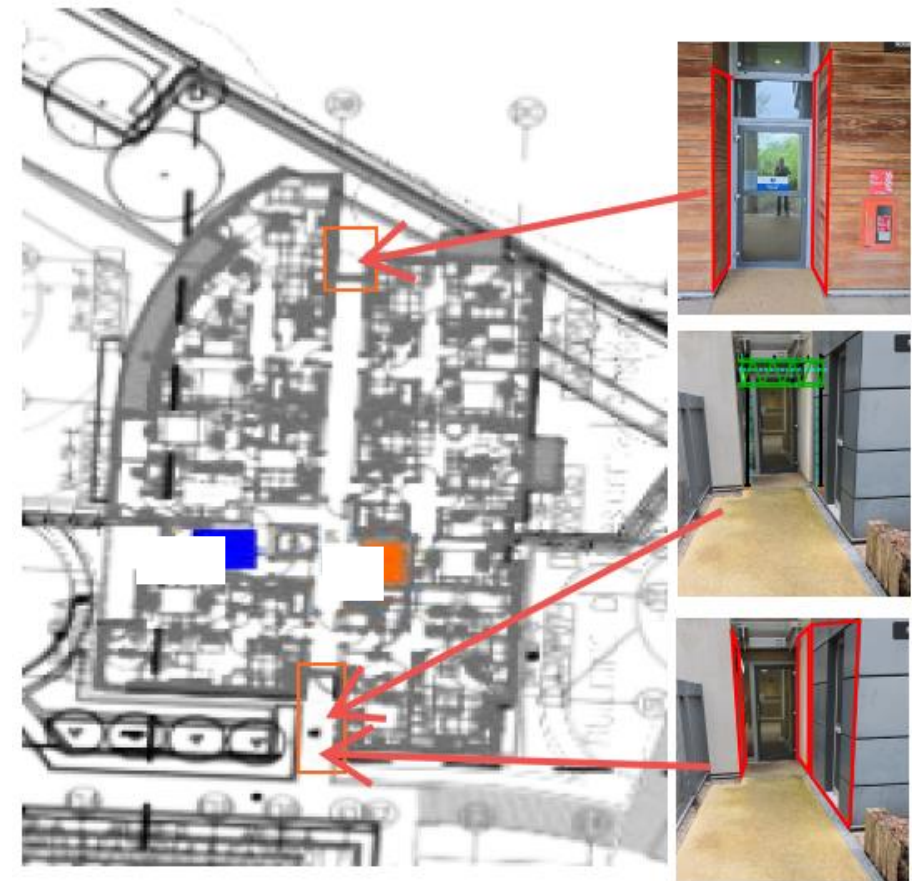


## Existing Access/Egress and Emergency routes

- Escape routes are not changed and are kept clear. Only locations shown below will have to be temporarily obstructed during construction of crash decks and for remediation of return/reveal walls.
- Works in these buildings are sequenced in such way that only one route is temporary obstructed at any given time.
- These temporary arrangements will be notified to all relevant stakeholders as defined in the Communication Strategy (Please refer to part 26.0 of the Fire and Emergency Plan)
- Adequate signage will be put in place & the area will be cord off to ensure safe working zones.

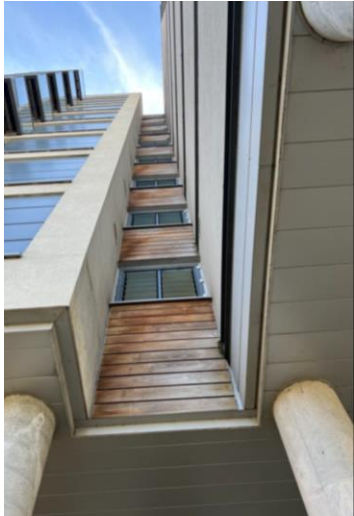
Block C- North timber reveals 40 working hours, South render 40 working hours, Crash deck construction 16 working hours

Block D- North timber reveals 40 working hours, South render 40 working hours, Crash deck construction 16 working hours

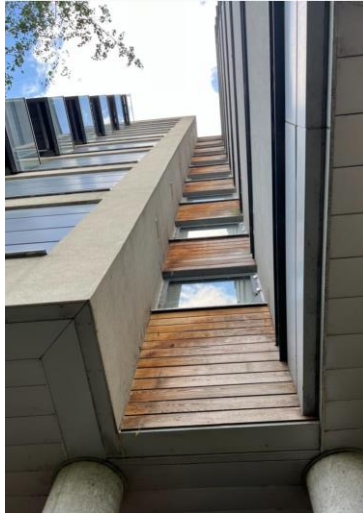


## Existing Access/Egress and Emergency routes

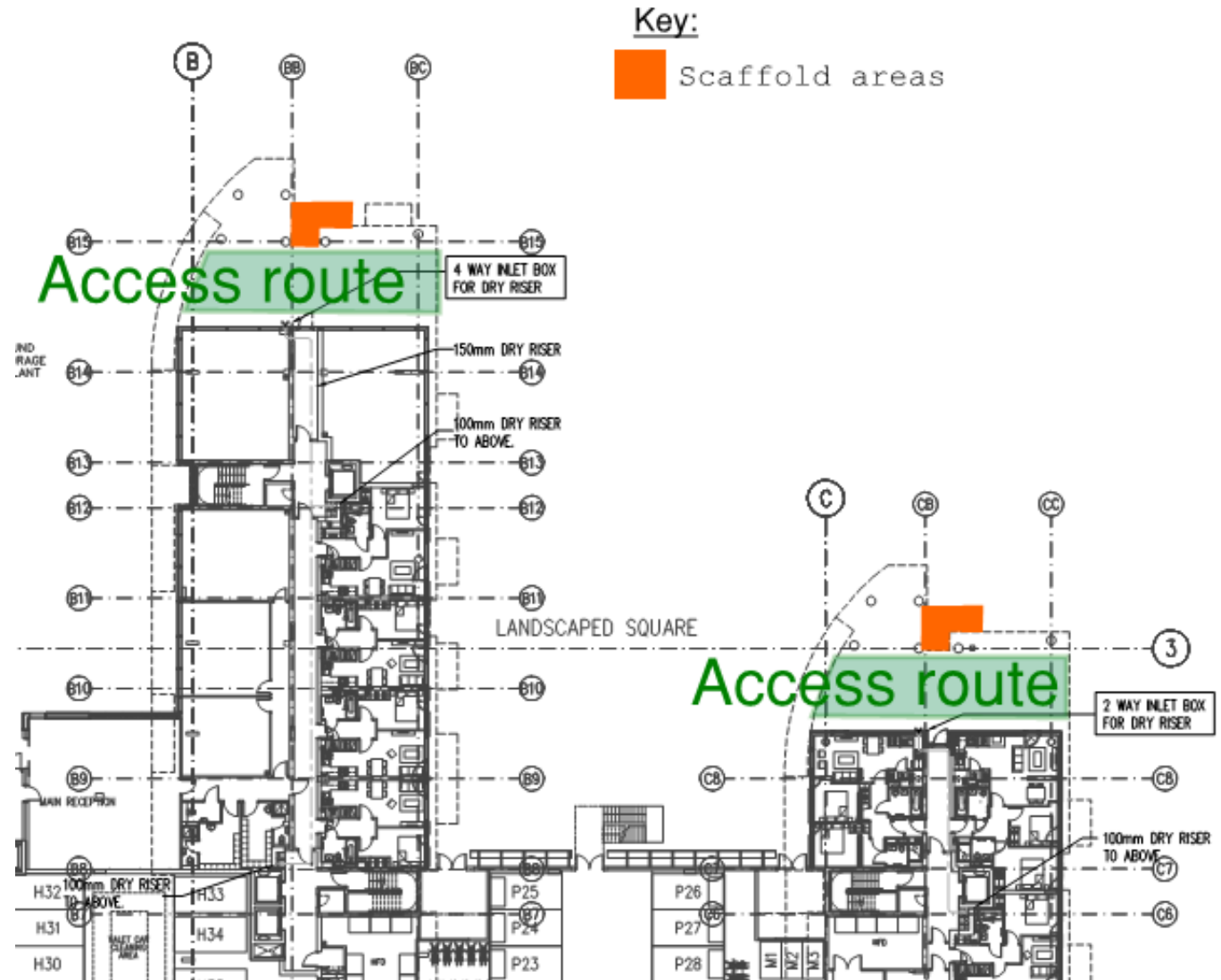
- Emergency services routes will not be modified and will be maintained clear of obstruction.
- Scaffold towers located at the north of Blocks B and C will be designed and built to provide clearance from the fire services access routes.
- The figure below is a more detailed representation that shows the interface between the scaffold areas and fire service route in the above-mentioned locations.



Block B - North



Block C - North



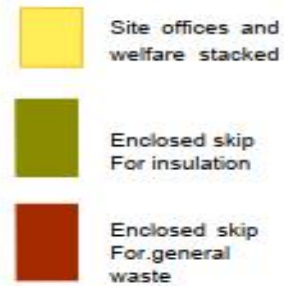
# Construction Phase Welfare & Waste Management

Welfare zones and waste zones will be the first areas Where possession will be required to enable the Main works.

These zones will be needed for the duration of the Works.

Commence 22/11/24 – Handover 28/05/26

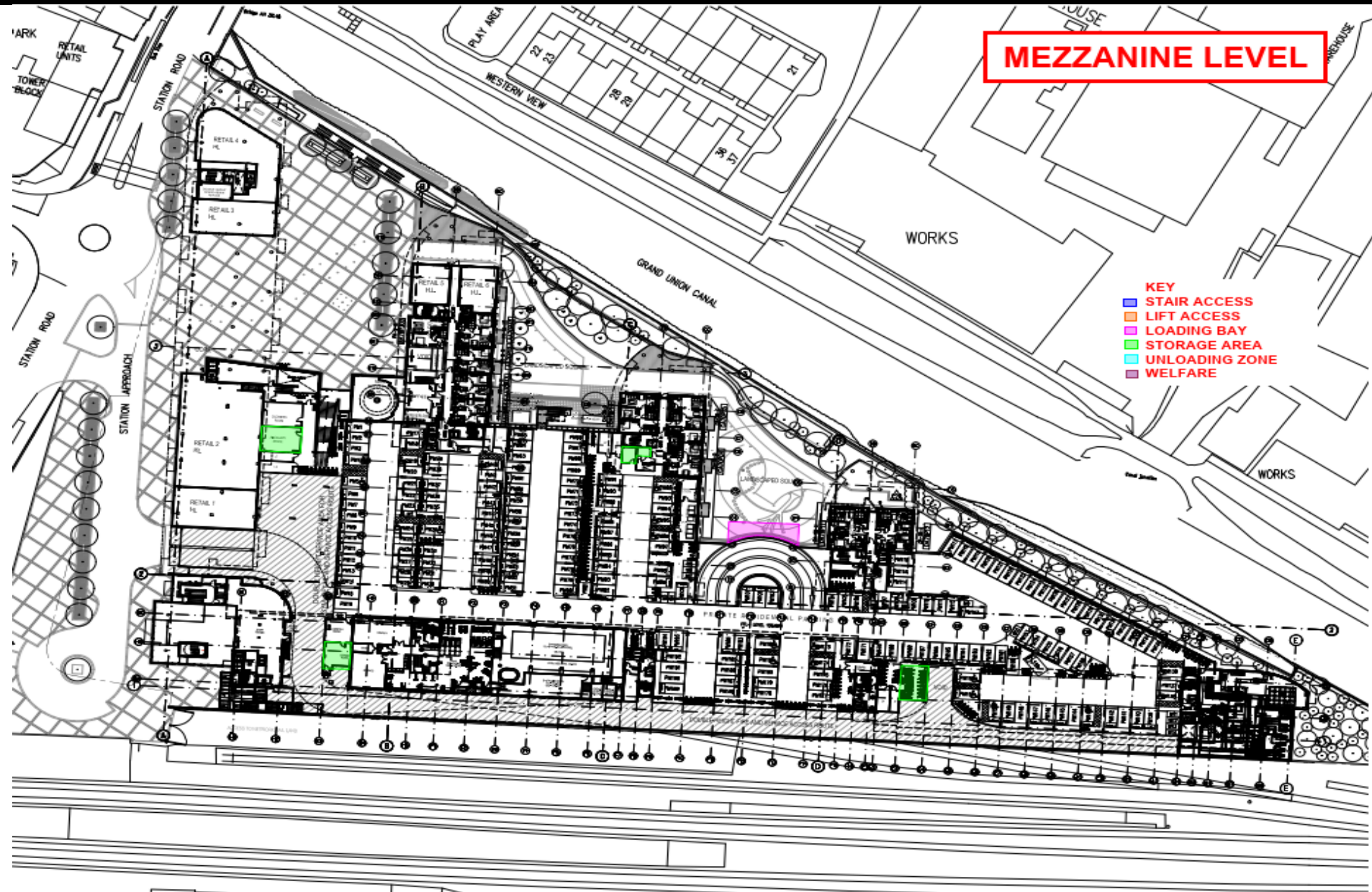
- Construction waste will be kept separate from residential waste
- Construction waste will be kept in enclosed skips and fenced off
- Combustible waste insulation will be kept away from the building in enclosed skip and fenced off.



## Construction Phase Storage

These zones will be needed for the duration of the Works.

Commence 22/11/24 – Handover 28/05/26



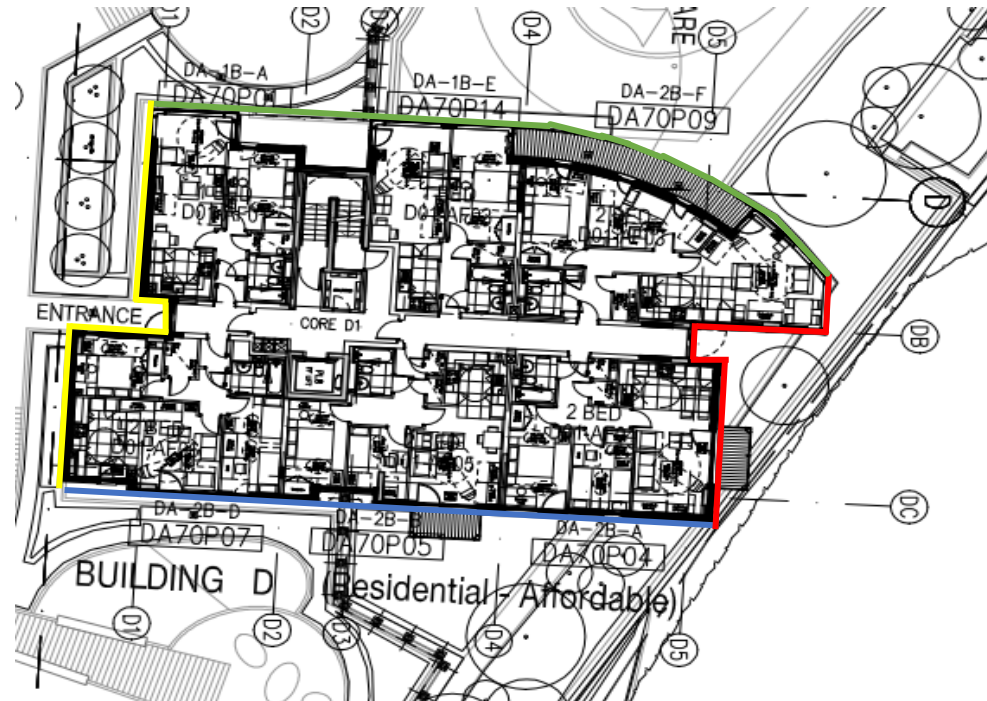
## Handover 1 – Block D – Signal Building



## Handover 1 – Block D – Elevation handover

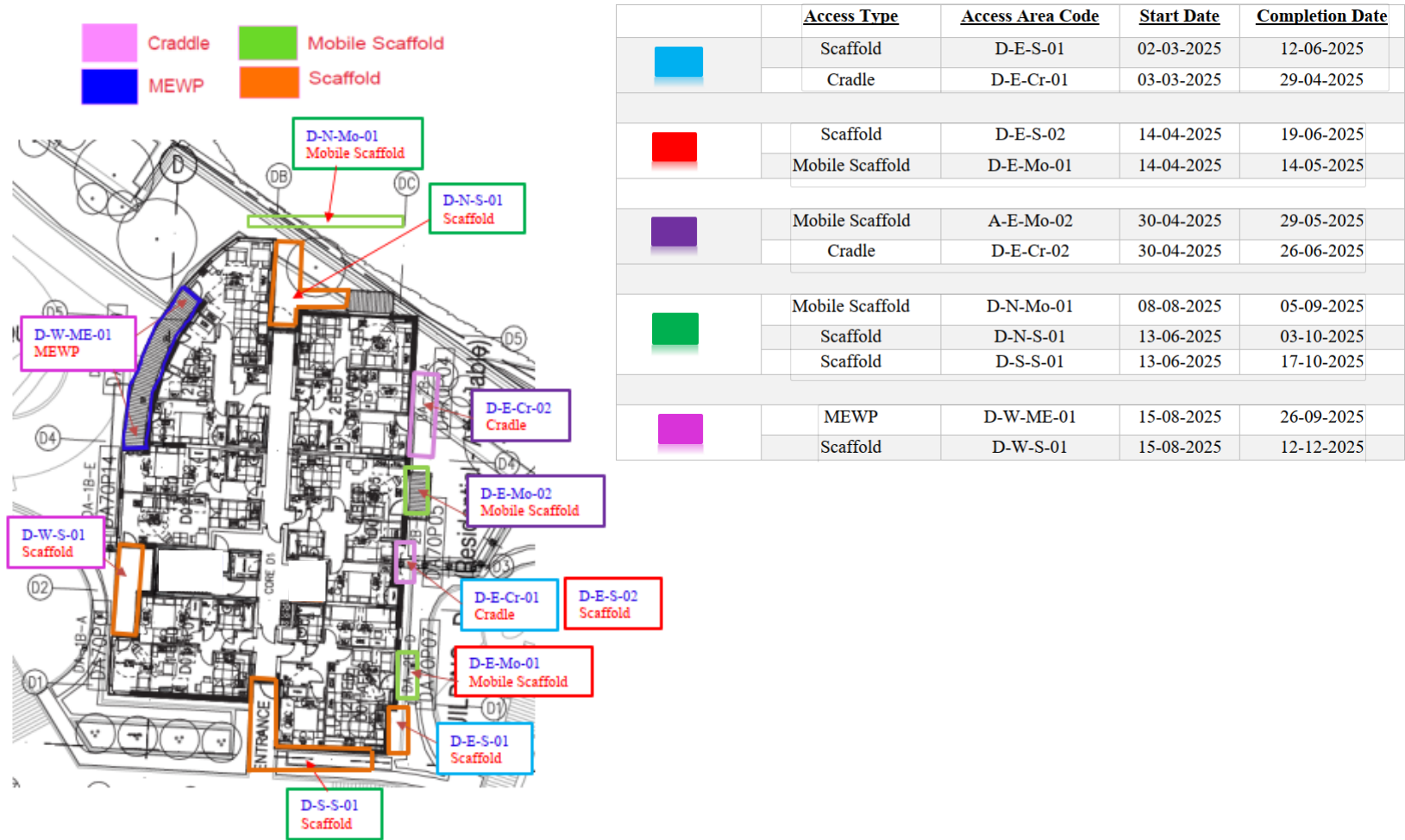
Below is a plan view of block D showing elevation handovers to illustrate when all works on this elevation will be finished and can be handed back to Ballymore.

— EAST	— NORTH	— SOUTH	— WEST
Handover 01/08/25	Handover 06/10/25	Handover 20/10/25	Handover 15/12/25



Handover 1 – Block D – Zone Access & handover

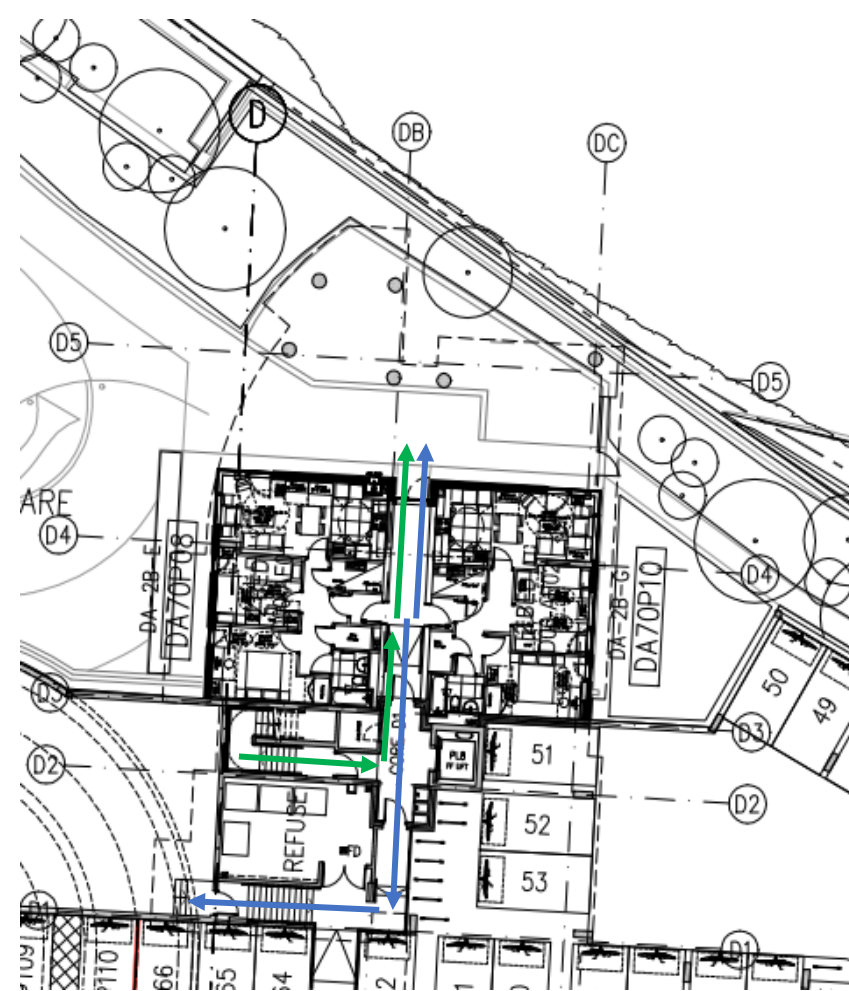
Below is a plan view of block D showing which access method will be used in each zone along with start and completion dates



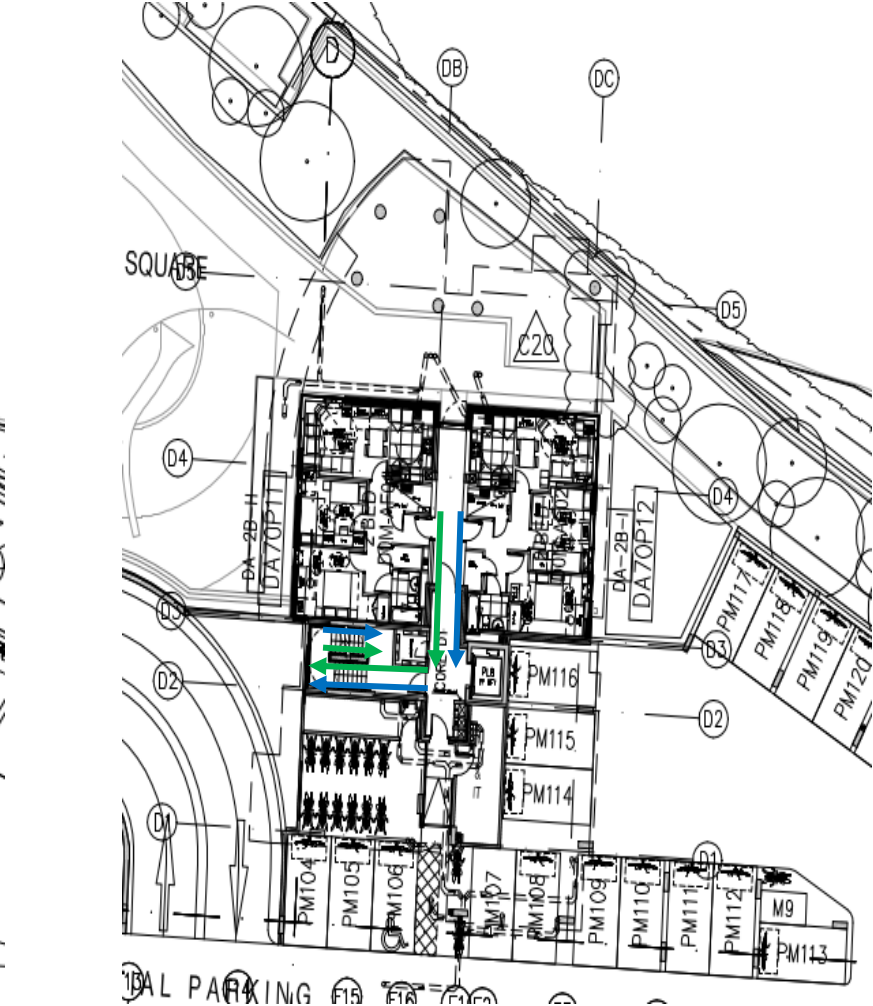
Handover 1 – Block D – Access/Egress

Access/Egress pathways to be considered/maintained during the construction process.

Block D Ground Floor                      Block D parking level                      Block D 1st Floor



Block D parking level



BLOCK D 1st Floor

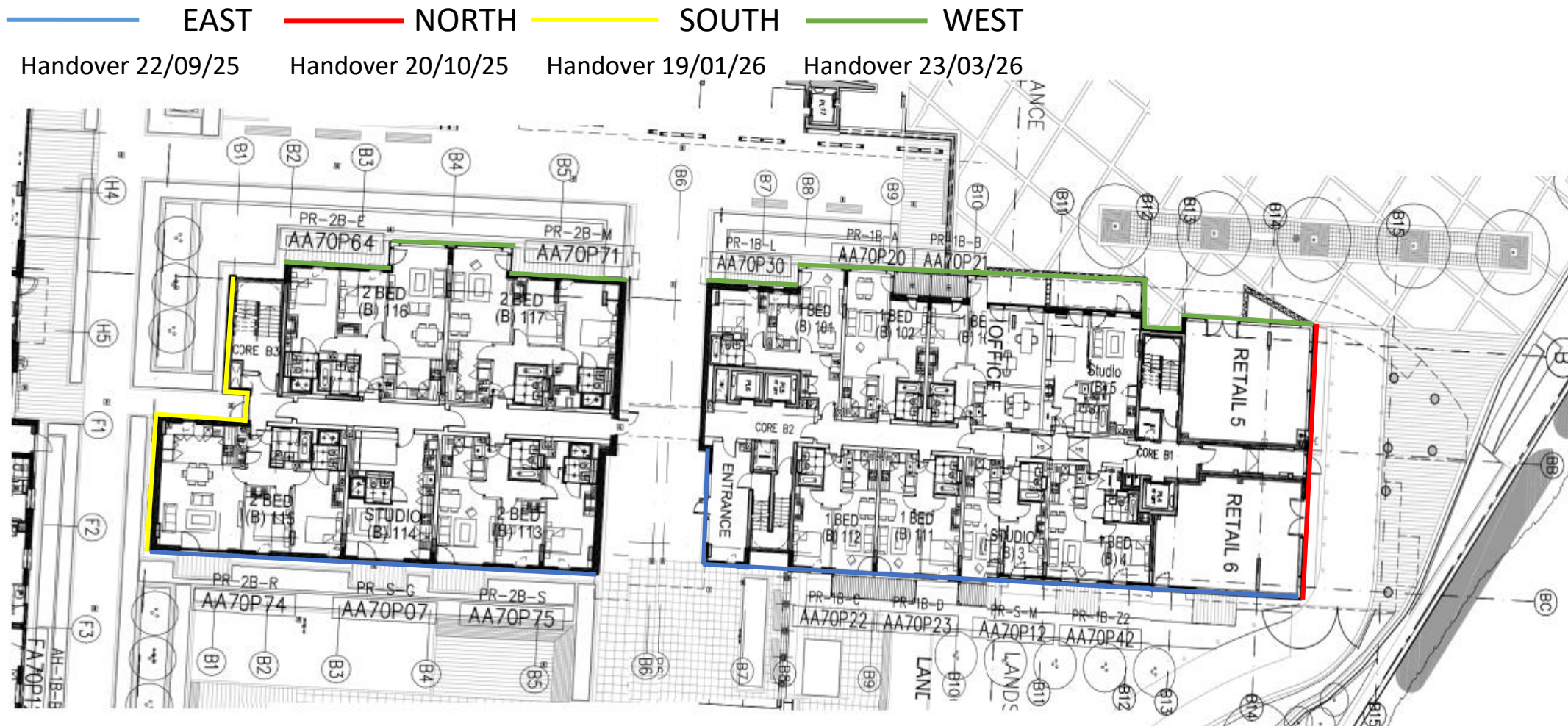


## Handover 2 – Block B – Cardinal Building



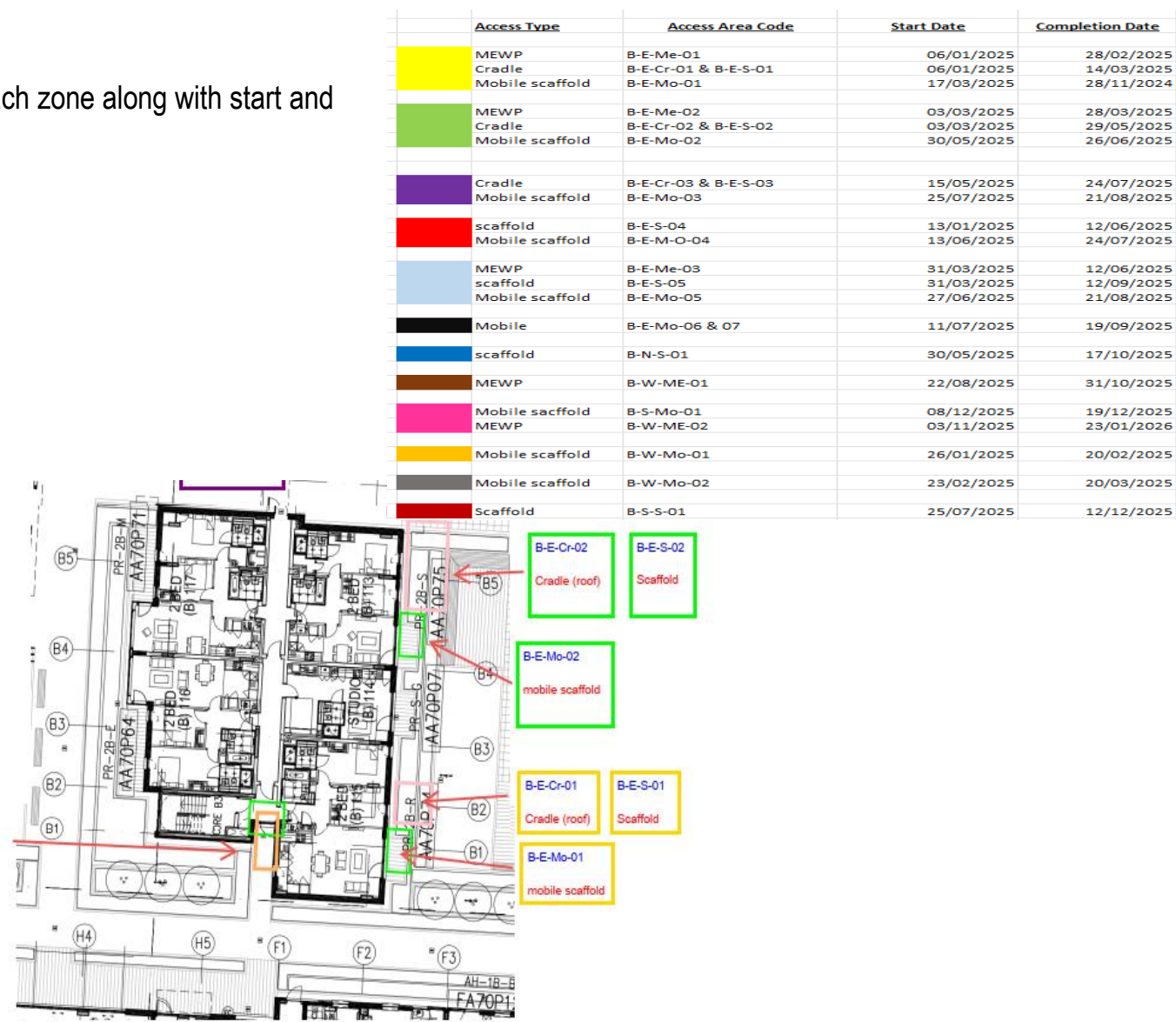
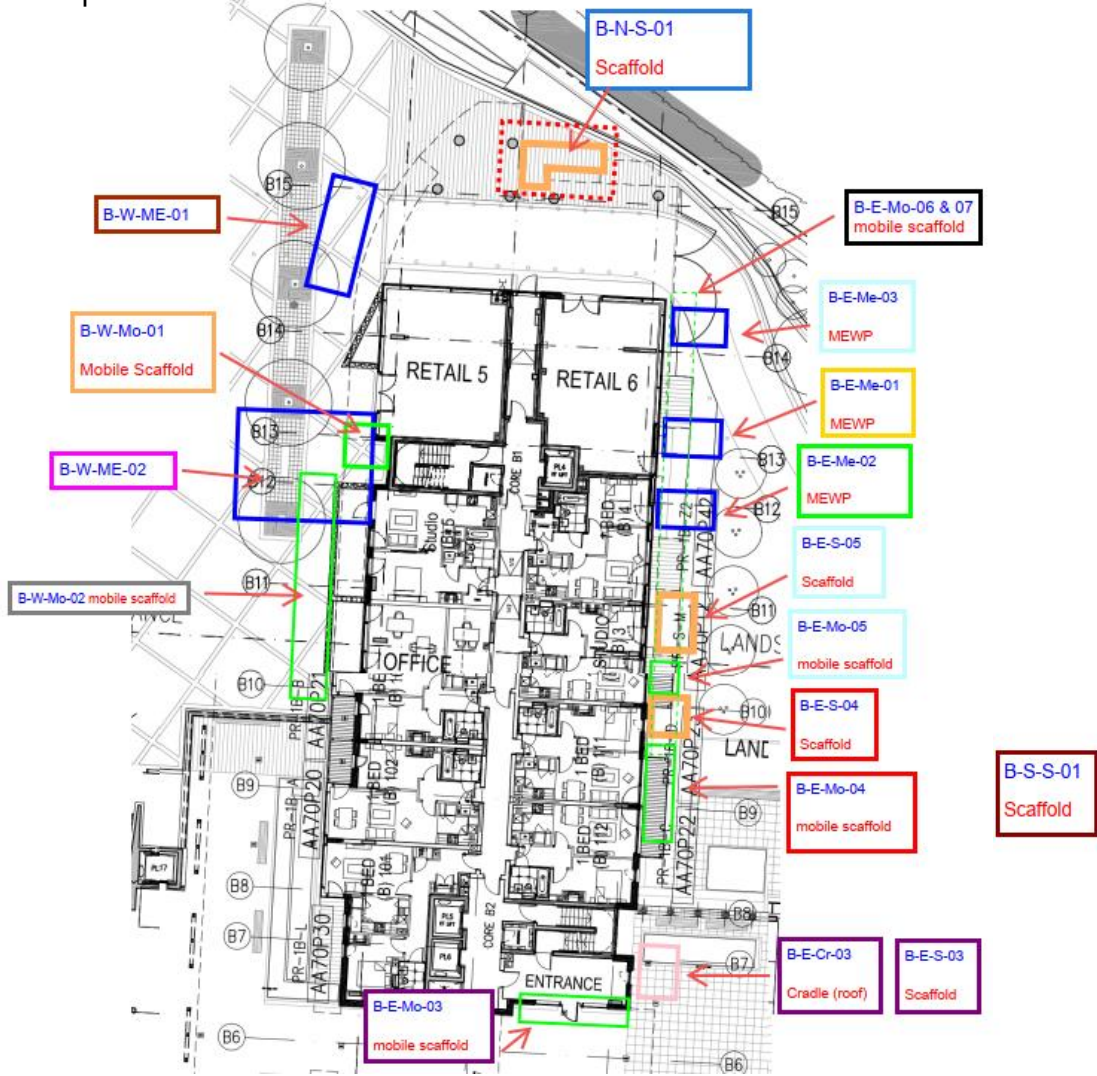
## Handover 2 – Block B – Elevation handover

Below is a plan view of block B showing elevation handovers to illustrate when all works on this elevation will be finished and can be handed back to Ballymore.





Handover 2 – Block B – Zone Access type & Handover

Below is a plan view of block B showing which access method will be used in each zone along with start and completion dates

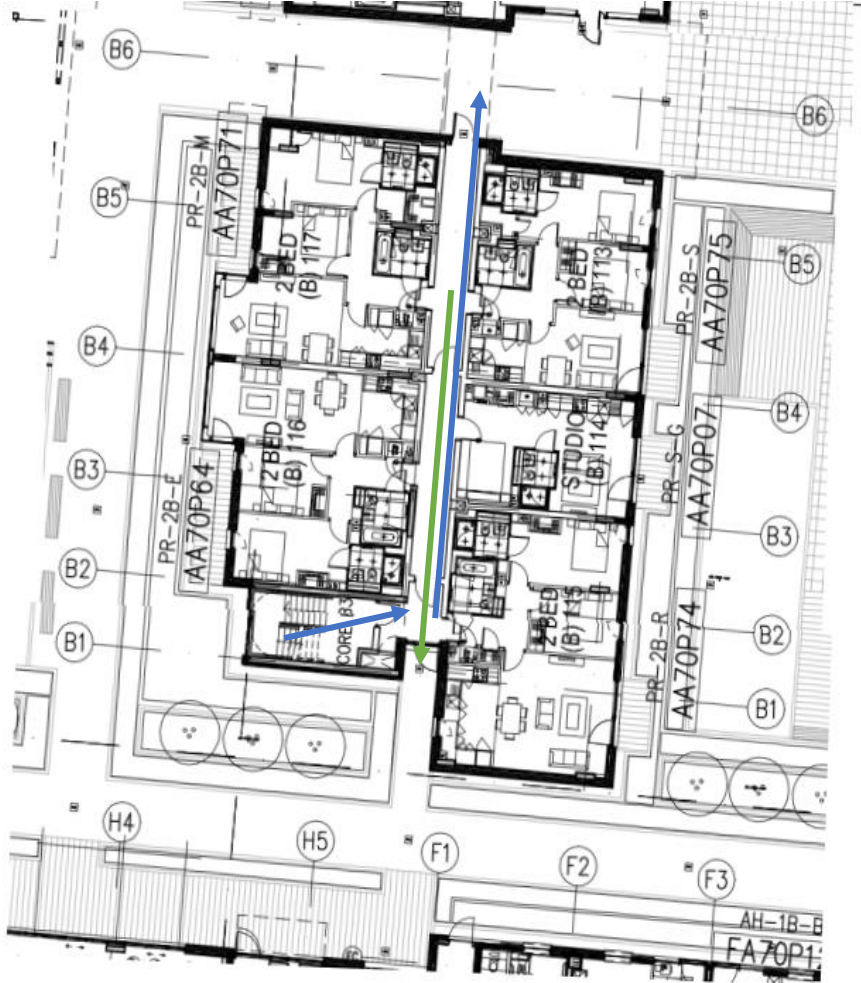


## Handover 2 – Block B – Access/Egress

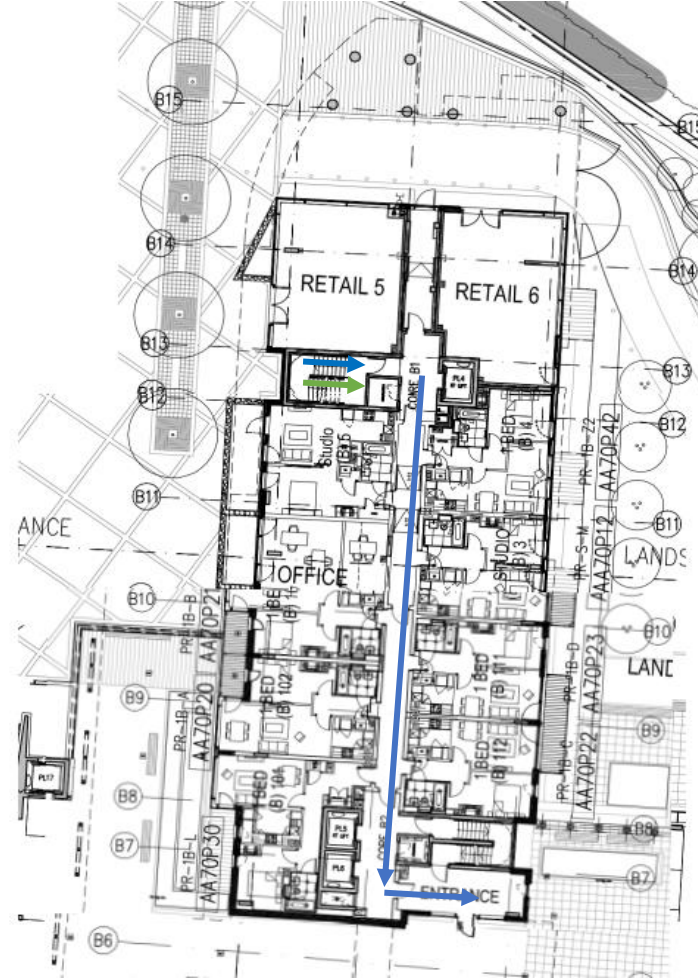
 Pedestrian Route  
 Emergency escape

Access/Egress pathways to be considered/maintained during the construction process.

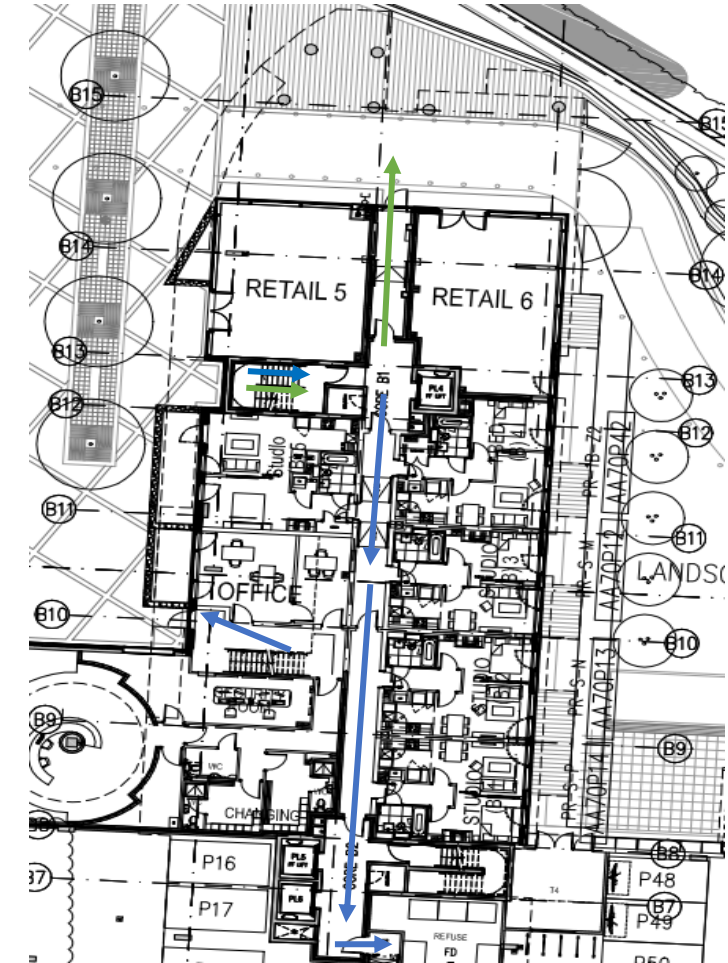
Block B 2<sup>nd</sup> floor south block



Block B 1<sup>st</sup> floor North block



Block B ground floor







## Handover 3 – Block C – Navigation Building



## Handover 3 – Block C – Elevation handover

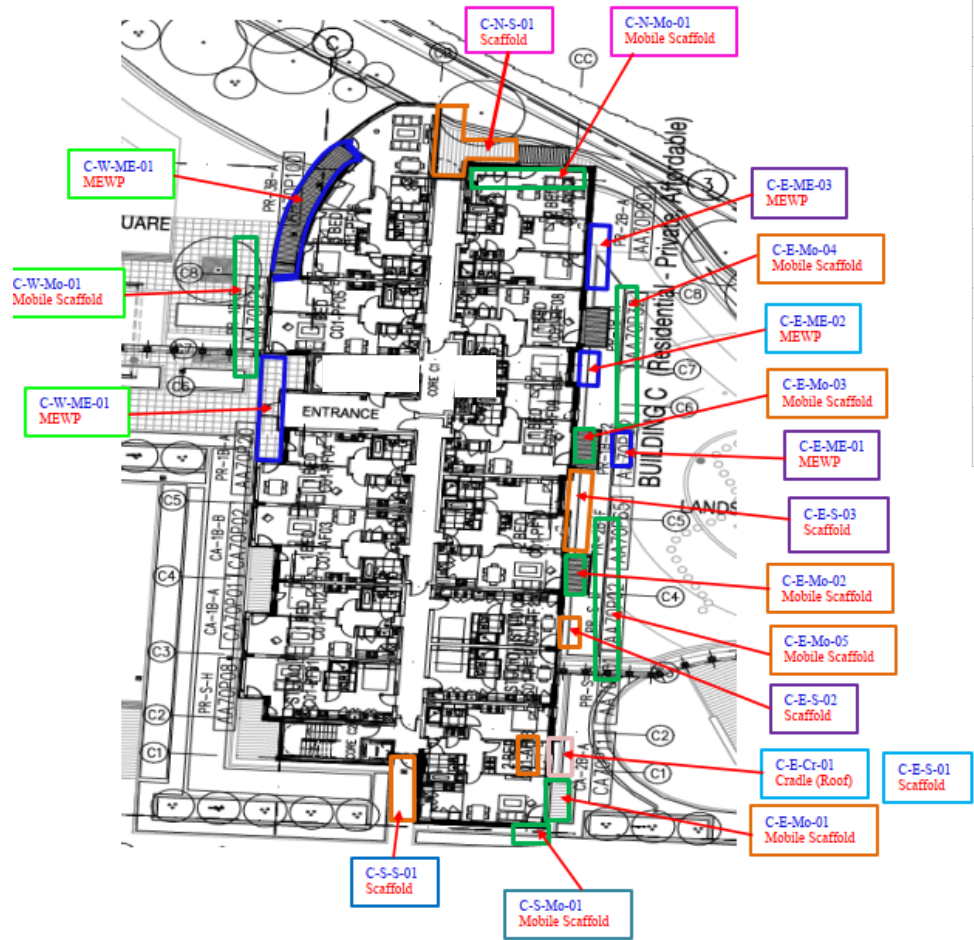
Below is a plan view of block C showing elevation handovers to illustrate when all works on this elevation will be finished and can be handed back to Ballymore.

	EAST		NORTH		SOUTH		WEST
Handover 20/10/25		Handover 15/12/25		Handover 08/04/26		Handover 01/04/26	



Handover 3 – Block C – Zone Access type & Handover

Below is a plan view of block C showing which access method will be used in each zone along with start and completion dates



	Access Type	Access Area Code	Start Date	Completion Date
	MEWP	C-E-ME-02	08-05-2025	03-07-2025
	Scaffold & Cradle	C-E-S-01 & C-E-Cr-01	08-05-2025	29-08-2025
	MEWP	C-E-ME-03 & C-E-ME-01	04-07-2025	26-09-2025
	Scaffold	C-E-S-02 & C-E-S-03	15-05-2025	05-09-2025
	Mobile Scaffold	C-E-Mo-01 & C-E-Mo-02 & C-E-Mo-03 & C-E-Mo-04 & C-E-Mo-05	01-09-2025	13-10-2025
	Scaffold	C-N-S-01	22-08-2025	12-12-2025
	Mobile Scaffold	C-N-Mo-01	20-10-2025	31-10-2025
	MEWP	C-W-ME-01 & C-W-ME -02	01-12-2025	31-03-2025
	Mobile Scaffold	C-W-Mo-01	02-03-2026	31-03-2026
	Scaffold	C-S-S-01	26-01-2026	07-04-2026
	Mobile Scaffold	C-S-Mo-01	02-03-2026	13-03-2026

## Handover 3 – Block C – Access/Egress

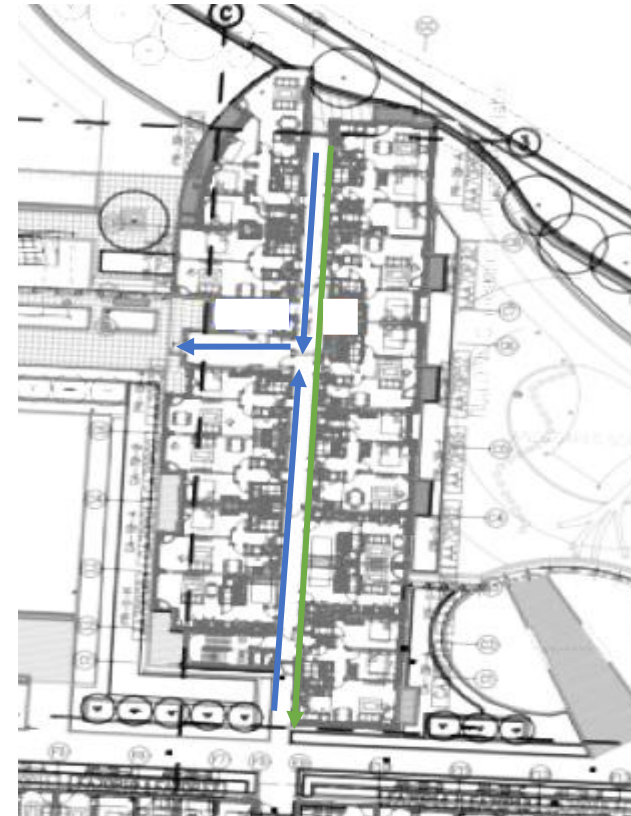
← Pedestrian Route  
← Emergency escape

Access/Egress pathways to be considered/maintained during the construction process.

Block C Ground floor



Block C 1<sup>st</sup> floor





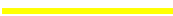

## Handover 4 – Block A – Vantage Building



High Point Village

## Handover 4 – Block A – Elevation handover

Below is a plan view of block A showing elevation handovers to illustrate when all works on this elevation will be finished and can be handed back to Ballymore.

	<b>EAST</b>		<b>NORTH</b>		<b>SOUTH</b>		<b>WEST</b>
Handover 05/11/25		Handover 17/12/25		Handover 11/05/26		Handover 24/04/26	



## Handover 4 – Block A – Zone Access type &amp; Handover

Below is a plan view of block A showing which access method will be used in each zone along with start and completion dates



	Access Type	Access Area Code	Start Date	Completion Date
Yellow	MEWP	A-E-ME-01 & A-E-ME-02	18-09-2024	22-10-2024
	Scaffold	A-E-S-01	18-09-2024	29-10-2024
	Mobile Scaffold	A-E-Mo-01 & A-E-Mo-02	30-10-2024	26-11-2024
Brown	MEWP	A-E-ME-03	23-10-2024	03-12-2024
	Scaffold	A-E-S-02	30-10-2024	10-12-2024
	Mobile Scaffold	A-E-Mo-03 & A-E-Mo-04	11-12-2024	21-01-2025
Purple	MEWP	A-E-ME-04	04-12-2024	28-01-2025
	Scaffold	A-E-S-03	11-12-2024	04-02-2025
	Mobile Scaffold	A-E-Mo-05	05-02-2025	18-02-2025
Red	MEWP	A-E-ME-05	29-01-2025	04-03-2025
	Scaffold	A-E-S-04	05-02-2025	11-03-2025
	Mobile Scaffold	A-E-Mo-06 & A-E-Mo-07	12-03-2025	08-04-2025
Pink	MEWP	A-E-ME-06 & A-E-ME-07	05-03-2025	09-05-2025
	Scaffold	A-E-S-05	12-03-2025	15-04-2025
	Mobile Scaffold	A-E-Mo-08 & A-E-Mo-09	09-04-2025	09-05-2025
Blue	MEWP	A-E-ME-08	12-05-2025	07-07-2025
Dark Blue	MEWP	A-W-ME-01	19-08-2025	30-09-2025
	Mobile Scaffold	A-N-Mo-01	08-07-2025	21-07-2025
	Scaffold	A-N-S-01	27-05-2025	07-07-2025
Magenta	MEWP	A-W-ME-02 & A-W-ME-03	01-10-2025	06-01-2026
	Mobile Scaffold	A-W-Mo-01	22-07-2025	09-09-2025
Green	Scaffold	A-S-S-01 & A-S-S-02	10-09-2025	18-11-2025
	Cradle	A-S-Cr-01	19-11-2025	02-12-2025
	Mobile Scaffold	A-S-Mo-01 & A-S-Mo-02	19-11-2025	02-12-2025

## Handover 4 – Block A – Access/Egress

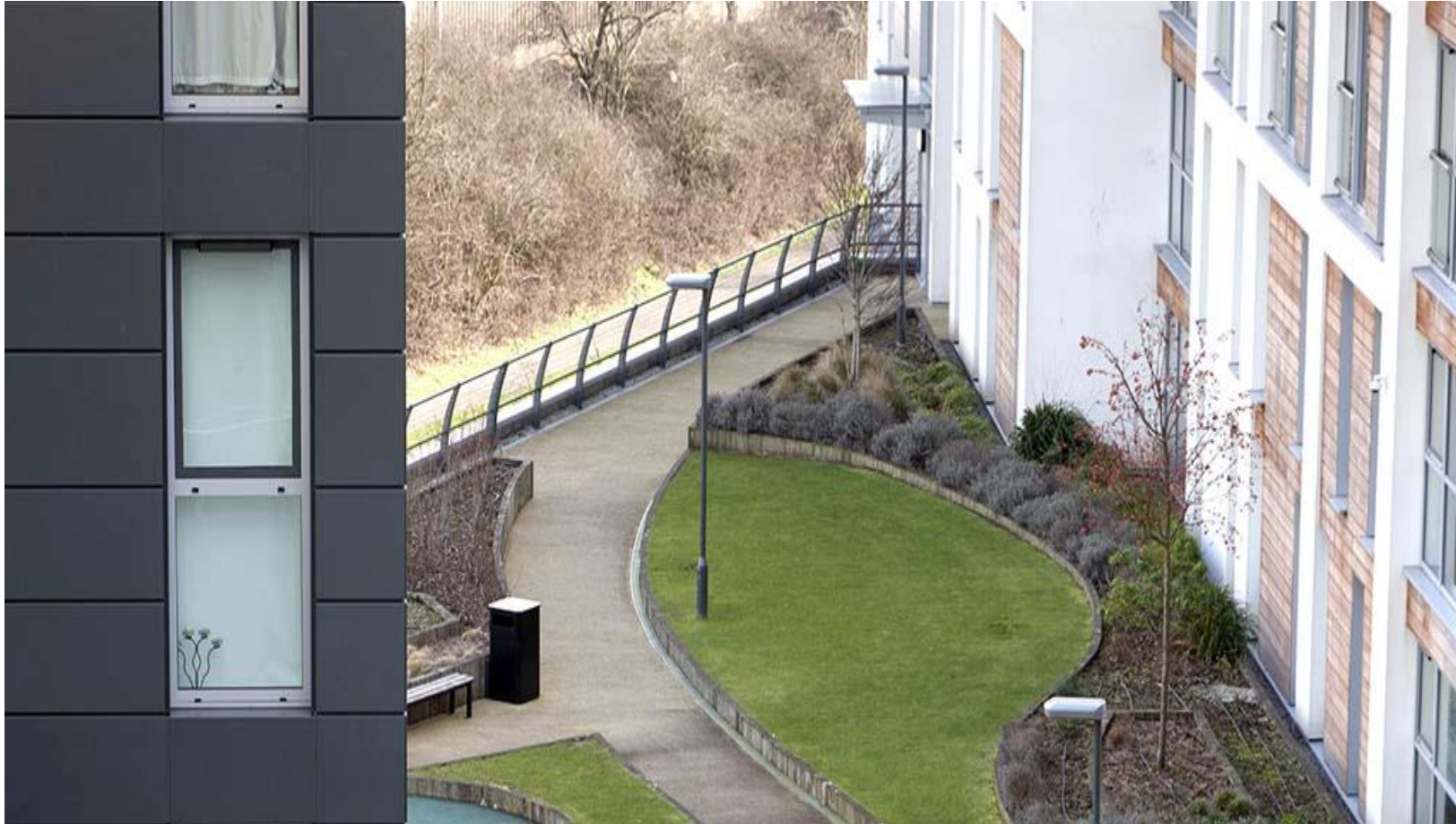
← Pedestrian Route  
← Emergency escape

Access/Egress pathways to be considered/maintained during the construction process.

Block A 1st Ground floor



## Handover 5 – Block E – Compass Building

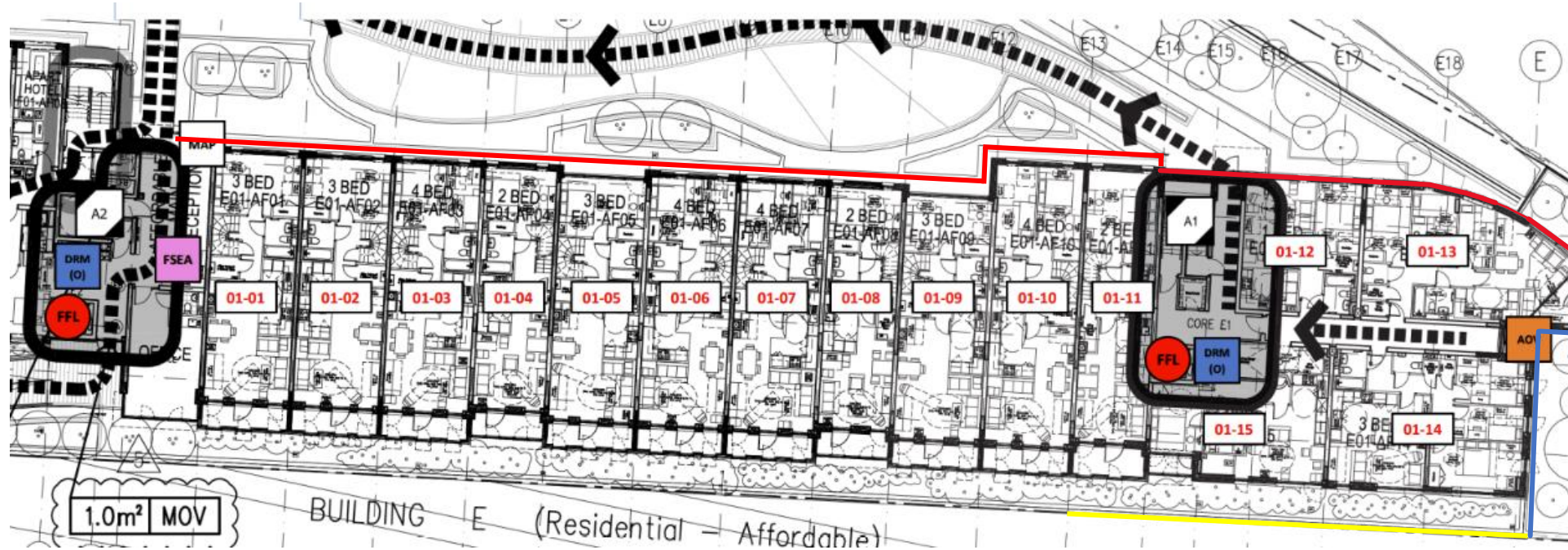


## Handover 5 – Block E – Elevation handover

Below is a plan view of block E showing elevation handovers to illustrate when all works on this elevation will be finished and can be handed back to Ballymore.

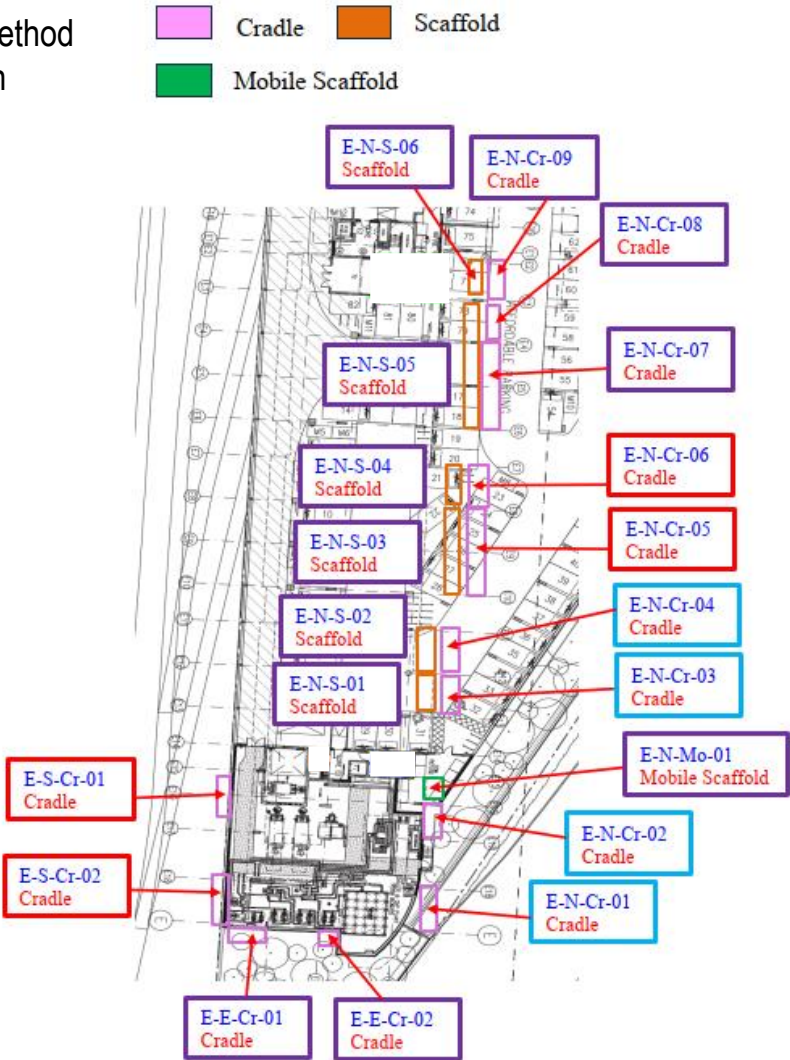
— EAST — NORTH — SOUTH

Handover 18/11/25      Handover 11/05/26      Handover 16/09/25



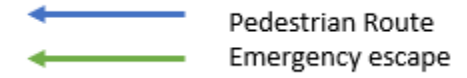
Handover 5 – Block E – Zone Access type & Handover

Below is a plan view of block E showing which access method will be used in each zone along with start and completion dates



	Access Type	Access Area Code	Start Date	Completion Date
<div></div>	Cradle	E-N-Cr-01	09-05-2025	22-05-2025
	Cradle	E-N-Cr-02	16-05-2025	30-05-2025
	Scaffold & Cradle	E-N-S-01 & E-N-Cr-03	27-11-2025	04-03-2026
	Scaffold & Cradle	E-N-S-02 & E-N-Cr-04	04-12-2025	11-03-2026
<div></div>	Cradle	E-S-Cr-01	28-07-2025	15-09-2025
	Cradle	E-S-Cr-02	21-07-2025	15-09-2025
	Scaffold & Cradle	E-N-S-03 & E-N-Cr-05	11-12-2025	25-03-2026
	Scaffold & Cradle	E-N-S-04 & E-N-Cr-06	18-12-2025	03-04-2026
<div></div>	Cradle	E-E-Cr-01	11-08-2025	20-10-2025
	Cradle	E-E-Cr-02	18-08-2025	20-10-2025
	Scaffold & Cradle	E-N-S-05 & E-N-Cr-07 & E-N-Cr-08	22-01-2026	10-04-2026
	Scaffold & Cradle	E-N-S-06 & E-N-Cr-09	29-01-2026	24-04-2026
	Mobile Scaffold	E-N-Mo-01	19-02-2026	25-02-2026

## Handover 5 – Block E – Access/Egress



Access/Egress pathways to be considered/maintained during the construction process.

Block E 1st floor

