



astley.

Client:
Staycity

Date:
08.11.22

Full Address:
Station Approach
Hayes
UB3 4FL

Drg by:
AJ

Drawing Ref:
G_85530

Title:
Externals

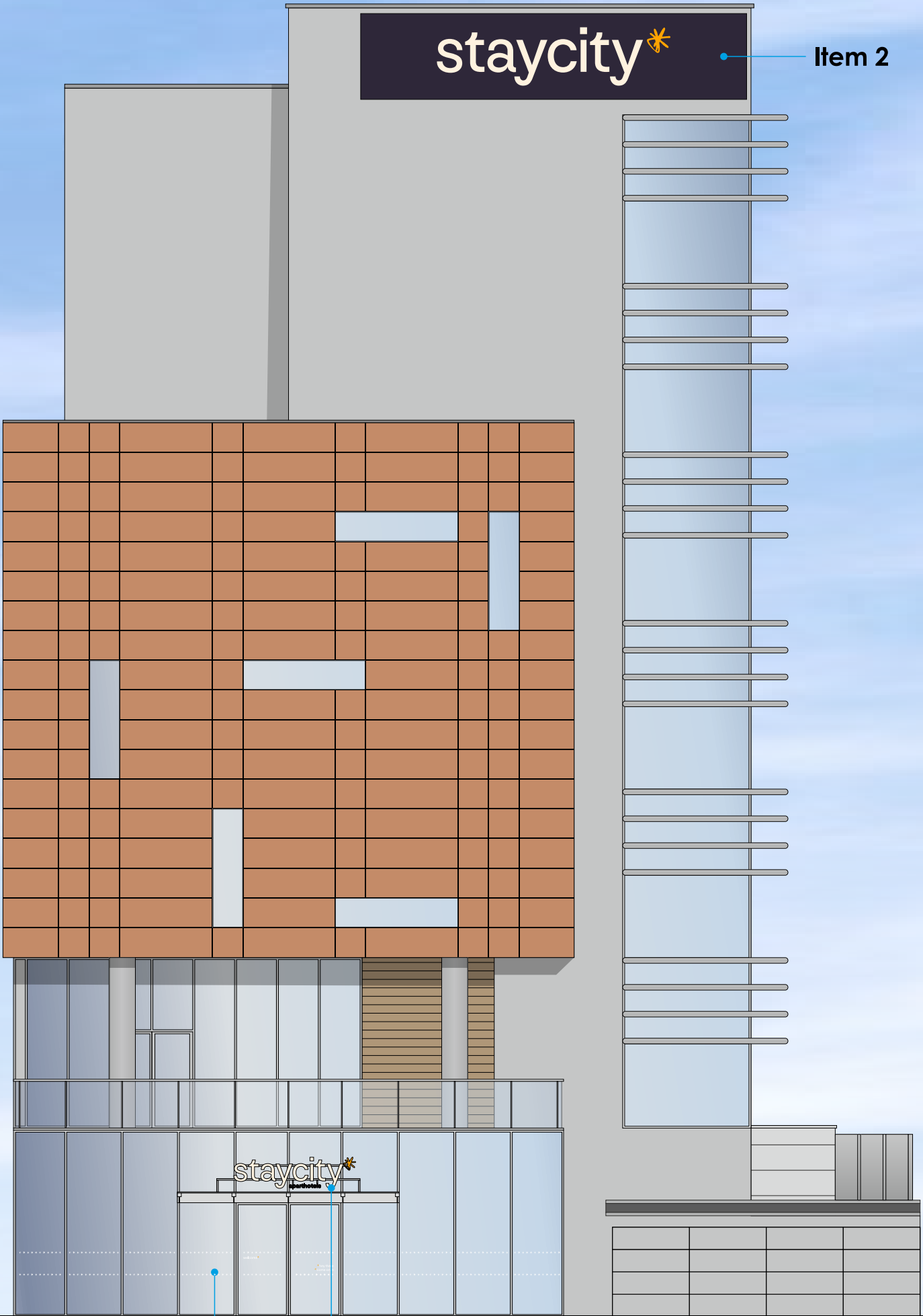
Visual Status:
PLANNING

Existing Hayes & Harlington Station Views





Entrance Elevation



Item 5

Item 1

Scale 1:125

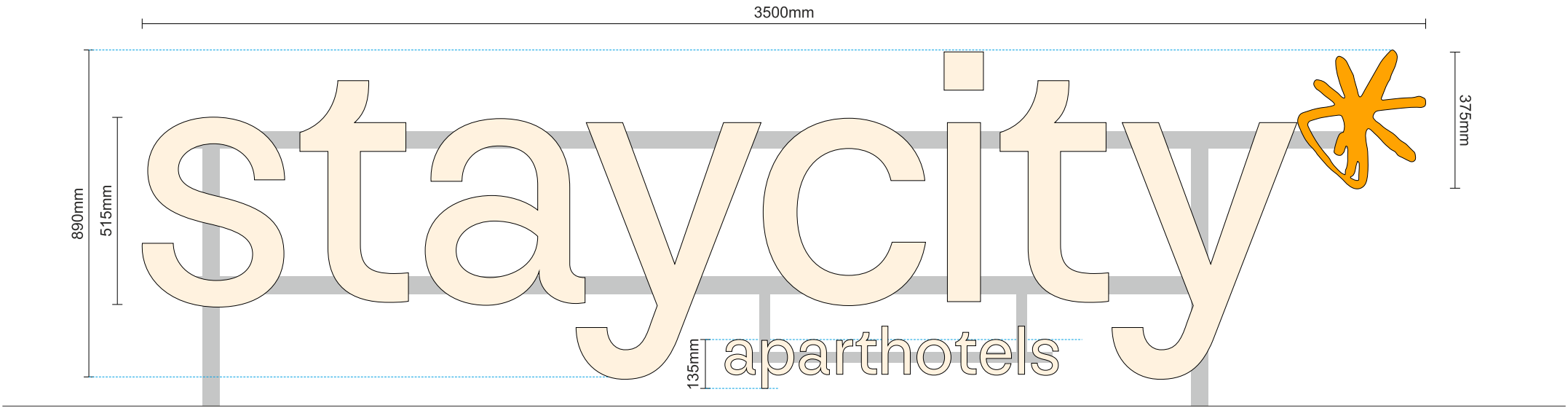
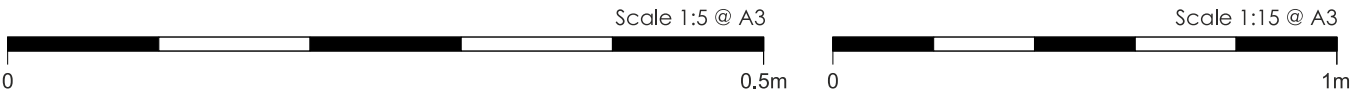
Item 4

staycity*

Item 3

staycity*

Scale 1:150



Face View
Scale 1:15 @ A3

Item 1

1No. sets of internally illuminated letters fitted to building.

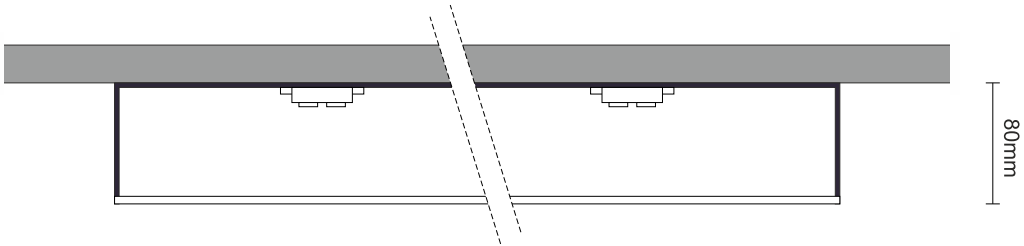
80mm deep fabricated aluminium letters & logo, returns powder coated Heidelberg matt black. Letter faces from ivory coloured acrylic, logo acrylic matching PMS 137c.

Letters & logo internally illuminated by means of white LEDs, giving face illumination only.

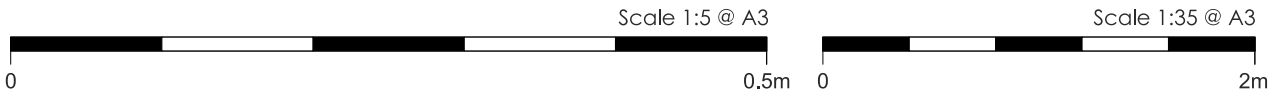
Sign fit to new framework, supplied by others.

Note: Electrical feed to be supplied to sign position by others.

Static illumination, less than 300 cd/m2 - FFL to under side of sign being: 2.5m



Section through
Scale 1:5 @ A3



Face View
Scale 1:35 @ A3

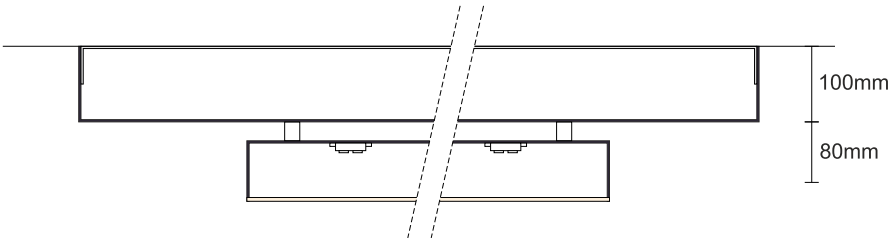
Item 2 &4

1No. 100mm deep fabricated aluminium stencil cut fascia box, powder coated Heidelberg matt black.

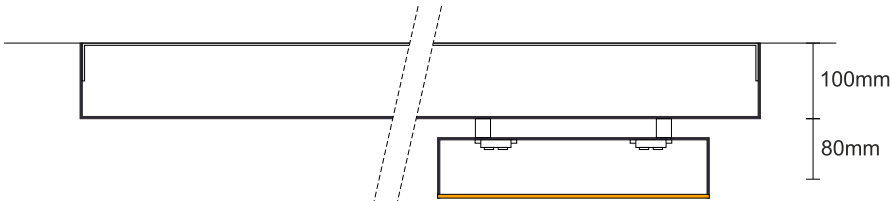
80mm deep fabricated aluminium 'staycity' & logo, returns powder coated Heidelberg matt black/purple. 'staycity' faces from ivory coloured acrylic, logo acrylic matching PMS 137c. Letters & logo spaced off fascia on 25mm conduit spacers. Both 'staycity' letters & logo internally illuminated by means of white LEDs, giving face illumination only.

Static illumination, less than 300 cd/m2
Roof level to under side of sign being: 30,000mm

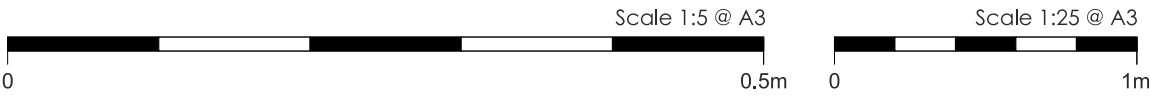
MANUFACTURING SURVEY REQUIRED



Fascia & 'staycity'
Scale 1:10 @ A3



Fascia & logo



Face View
Scale 1:25 @ A3

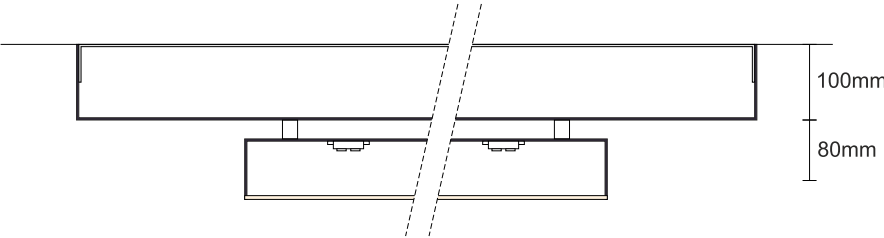
Item 3

1No. 100mm deep fabricated aluminium stencil cut fascia box, powder coated Heidelberg matt black.

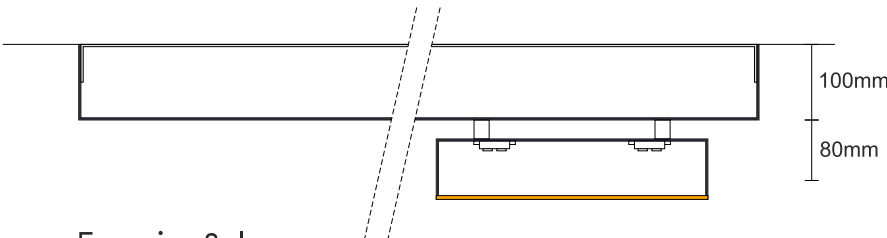
80mm deep fabricated aluminium 'staycity' & logo, returns powder coated Heidelberg matt black/purple. 'staycity' faces from ivory coloured acrylic, logo acrylic matching PMS 137c. Letters & logo spaced off fascia on 25mm conduit spacers. Both 'staycity' letters & logo internally illuminated by means of white LEDs, giving face illumination only.

Static illumination, less than 300 cd/m2
Roof level to under side of sign being: 30,000mm

MANUFACTURING SURVEY REQUIRED



Fascia & 'staycity'
Scale 1:10 @ A3



Fascia & logo



Existing view

I  hey there
 come on in



Approx 32m of new white & yellow vinyl 'Asterisk' manifestation, reverse applied to glazing.
Non-illuminated.

