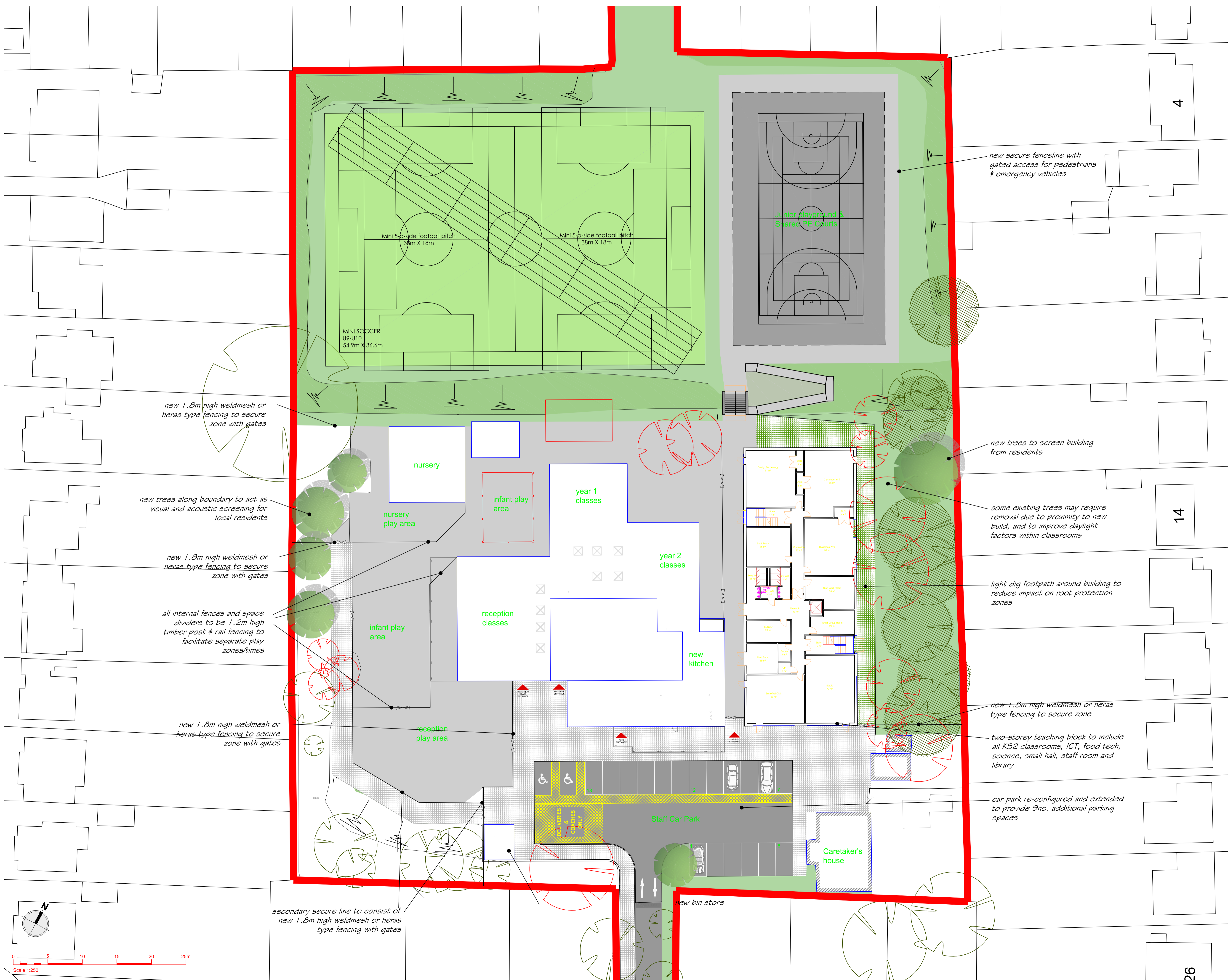


Appendix A – Architectural Plans



GENERAL NOTES
 All rights reserved.
 All drawings and written material appearing here, constitute original and unpublished work of the Architect and may not be duplicated, used or disclosed without written consent of the Architect.
 Notes and material designations are typical for similar conditions unless otherwise indicated.
 Do not scale from this drawing.

- KEY**
- HARD PLAY AREAS
 - ACCESS ROADS & PARKING AREAS
 - SOFT PLAY & LANDSCAPED AREAS
 - MINI SOCCER PITCH
 - EXISTING TREE RETAINED
 - EXISTING TREE REMOVED
 - PROPOSED TREE
 - PRIMARY SECURE LINE AS EXISTING FIRE BOUNDARY
 - SECONDARY SECURE LINE (1.2m CLT HIGH)

REV NO.	DATE	DESCRIPTION
D	25/11/16	mini-soccer pitches shown
C	23/11/16	additional trees shown removed to align with SES report
B	22/11/16	Title block changed
A	10/11/16	Fence lines adjusted & heights added; KS2 plan revised.

KEY PLAN

PROJECT
Warrender Primary School

CLIENT
London Borough of Hillingdon

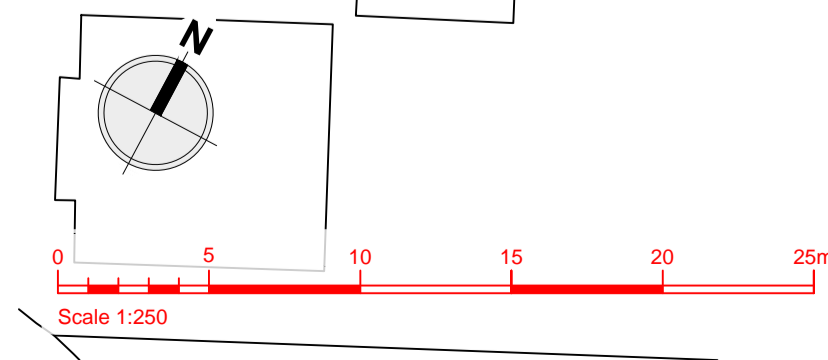
CALLISONRTKL
 A DESIGN CONSULTANCY OF ARCADIS
 CallisonRTKL, 25 Farringdon Street, 11th Floor, London EC4A 4AB
 T: +44(0)20 7306 9404

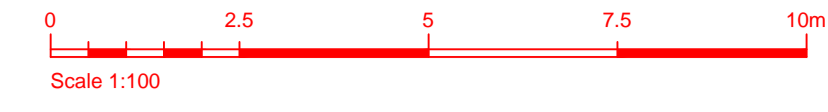
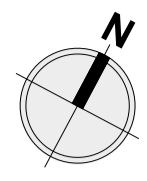
SHEET IDENTIFICATION
 TITLE
PROPOSED SITE PLAN

STATUS
Planning

PROJECT NUMBER: 050-160061-00
 DATE DRAWN: 10/11/16
 SCALE @ A1:
 DRAWN BY: AGR
 CHECKED BY: PD

DRAWING NUMBER: **A-10000**
 REVISION: **D**





NOTES:

Key

- New Walls
- Demolition

Rev	Date	Description	Drawn	Check	Approv
B	11-Nov-16	KS block layout adjusted			AGR
A	05-Oct-16	new nursery, parents room & SRP unit omitted. KS block layout adjusted and footprint reduced.	PSL		

Client:

London Borough of Hillingdon Council

PROJECT:
Extra Form of Entry School Expansions

Site
Warrender Primary School
Old Hatch Manor, Ruislip HA4 8QG

Client
London Borough of Hillingdon Council
Hillingdon Civic Centre, High St.
Uxbridge UB8 1UW
Phone +44 (0)1895 250111
Fax
www.hillingdon.gov.uk

ARCADIS Design & Consultancy for technical and built assets

Registered office:
Arcadis House
34 York Way
London
N1 9AB

Coordinating office:
Arcadis House
34 York Way
London
N1 9AB
Tel: 44 (0)20 7812 2000

www.arcadis.com

TITLE:
Warrender Primary School
Proposed General Arrangement
Ground Floor Plan

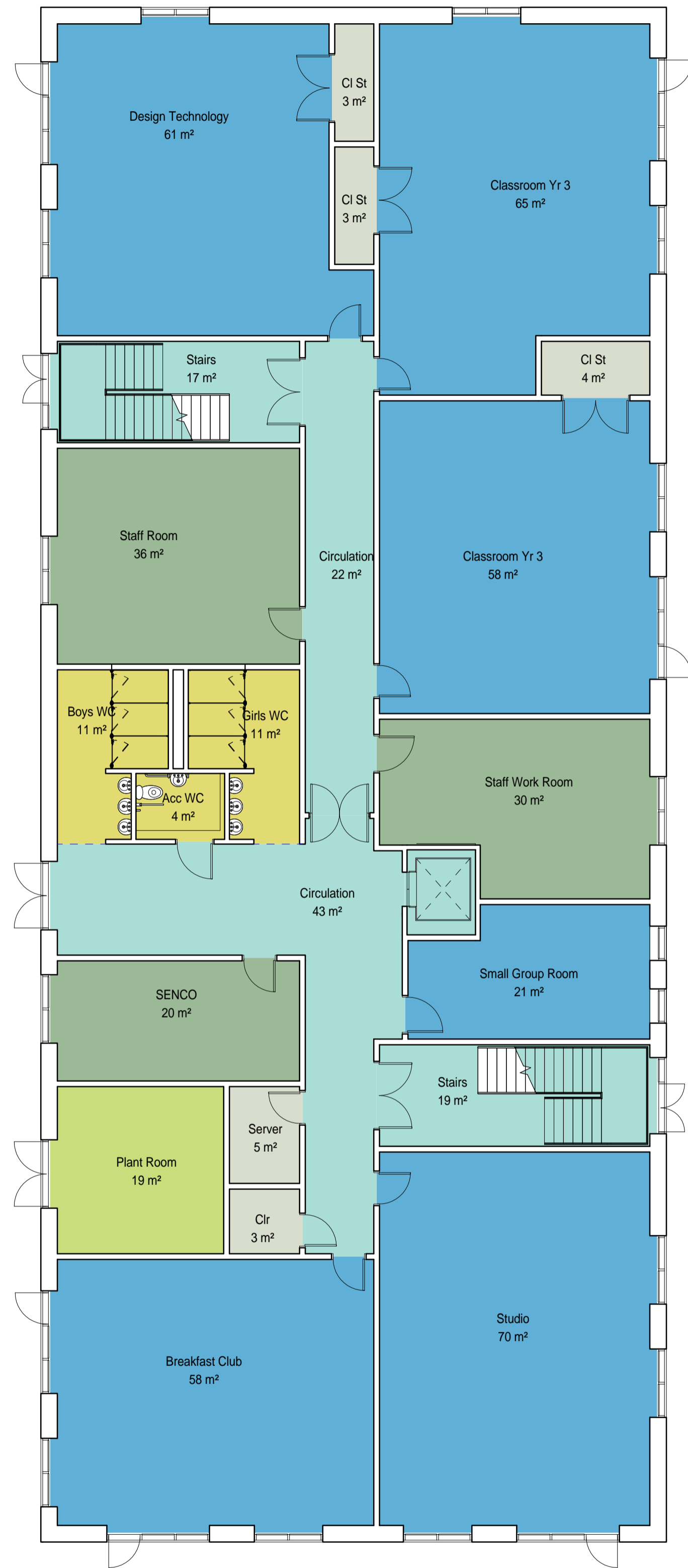
Designed	n/a	Signet	Date
Drawn	PSL	Signet	Sept 2016
Checked	AR	Signet	Sept 2016
Approved	AR	Signet	Sept 2016
Scale:	1:100	Datum:	
Original Size:	A1	Grid:	
Suitability Code:		Project Number:	35311100

Suitability Description:
FEASIBILITY

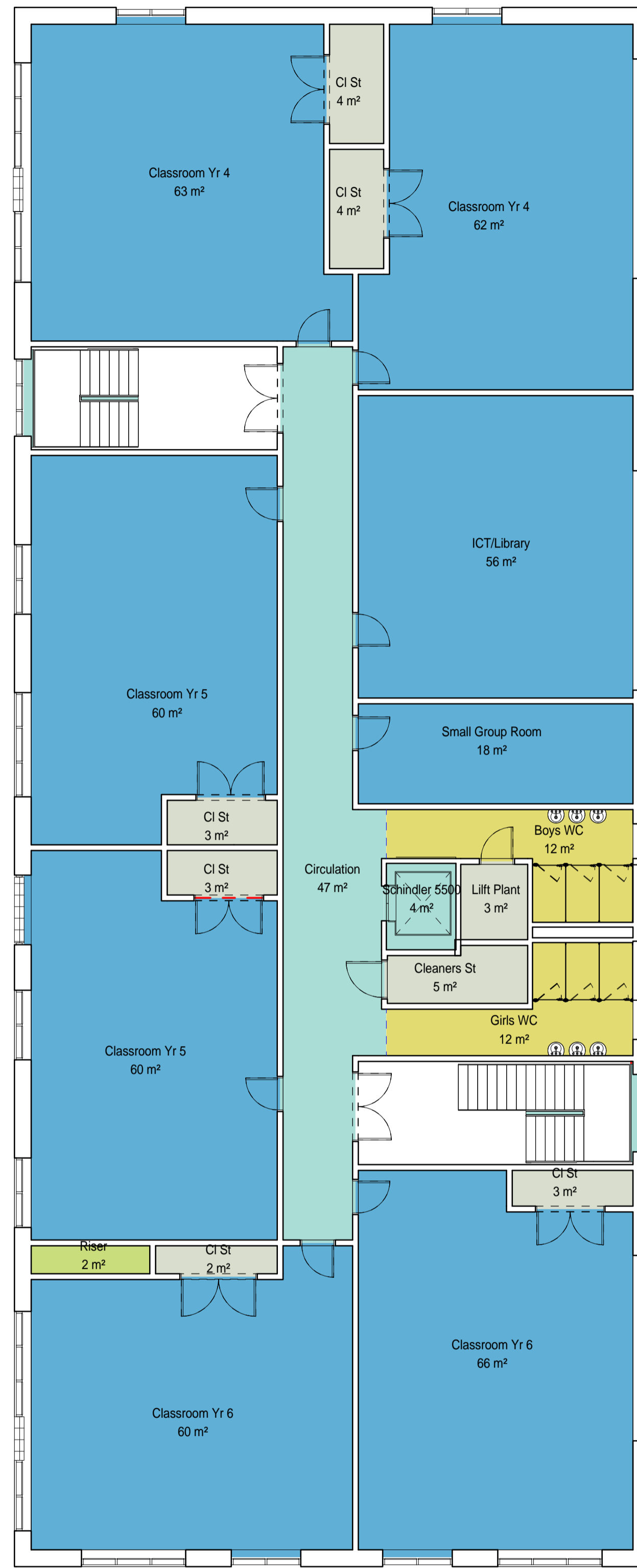
Drawing Number:
35311100 / WAR / SK02

Revision:
-

PROPOSED GROUND FLOOR



1 12 LEVEL 00
1:100



2 12 LEVEL 01
1:100

Room Area by Department				
Level	Room Type	Department	Area	Comments
LEVEL 00	Acc WC	WCs	4 m ²	
LEVEL 00	Boys WC	WCs	11 m ²	
LEVEL 00	Breakfast Club	Classroom	58 m ²	
LEVEL 00	Circulation	Circulation	43 m ²	
LEVEL 00	Circulation	Circulation	22 m ²	
LEVEL 00	Ci St	Store/BOH	3 m ²	
LEVEL 00	Ci St	Store/BOH	3 m ²	
LEVEL 00	Ci St	Store/BOH	4 m ²	
LEVEL 00	Classroom Yr 3	Classroom	65 m ²	
LEVEL 00	Classroom Yr 3	Classroom	58 m ²	
LEVEL 00	Cir	Store/BOH	3 m ²	
LEVEL 00	Design Technology	Classroom	61 m ²	
LEVEL 00	Girls WC	WCs	11 m ²	
LEVEL 00	Plant Room	Plant	19 m ²	
LEVEL 00	SENCO	Administration	20 m ²	
LEVEL 00	Server	Store/BOH	5 m ²	
LEVEL 00	Small Group Room	Classroom	21 m ²	
LEVEL 00	Staff Room	Administration	36 m ²	
LEVEL 00	Staff Work Room	Administration	30 m ²	
LEVEL 00	Stairs	Circulation	17 m ²	
LEVEL 00	Stairs	Circulation	19 m ²	
LEVEL 00	Studio	Classroom	70 m ²	
LEVEL 01	Boys WC	WCs	12 m ²	
LEVEL 01	Circulation	Circulation	47 m ²	
LEVEL 01	Ci St	Store/BOH	3 m ²	
LEVEL 01	Ci St	Store/BOH	3 m ²	
LEVEL 01	Ci St	Store/BOH	2 m ²	
LEVEL 01	Ci St	Store/BOH	4 m ²	
LEVEL 01	Ci St	Store/BOH	4 m ²	
LEVEL 01	Ci St	Store/BOH	3 m ²	
LEVEL 01	Classroom Yr 4	Classroom	63 m ²	
LEVEL 01	Classroom Yr 4	Classroom	62 m ²	
LEVEL 01	Classroom Yr 5	Classroom	60 m ²	
LEVEL 01	Classroom Yr 5	Classroom	60 m ²	
LEVEL 01	Classroom Yr 6	Classroom	66 m ²	
LEVEL 01	Classroom Yr 6	Classroom	60 m ²	
LEVEL 01	Cleaners St	Store/BOH	5 m ²	
LEVEL 01	Girls WC	WCs	12 m ²	
LEVEL 01	ICT/Library	Classroom	56 m ²	
LEVEL 01	Lift Plant	Store/BOH	3 m ²	
LEVEL 01	Riser	Plant	2 m ²	
LEVEL 01	Schindler 5500	Circulation	4 m ²	
LEVEL 01	Small Group Room	Classroom	18 m ²	
Grand total:	43		1137 m ²	

GENERAL NOTES
All rights reserved.
All drawings and written material appearing here, constitute original and unpublished work of the Architect and may not be duplicated, used or disclosed without written consent of the Architect.
Notes and material designations are typical for similar conditions unless otherwise indicated.
Do not scale from this drawing.

Department Legend

- Administration
- Circulation
- Classroom
- Plant
- Store/BOH
- WCs

2	11/11/16	Cir circulation amended with additional doors: Fit small group room added. ICTLib adjusted
1	11/11/16	Plant room resized: small group room reinserted: lift plant room access amended first floor

REV NO. DATE DESCRIPTION

KEY PLAN

PROJECT
Warrender Primary School

CLIENT
London Borough of Hillingdon

CALLISORTKL
A DESIGN CONSULTANCY OF ARCADIS
CallisortKL 25 Farringdon Street, 10th Floor, London, EC4A 4AB.
T: +44(0)20 7306 0404

SHEET IDENTIFICATION
TITLE

GENERAL ARRANGEMENTS PLAN

STATUS
Planning

PROJECT NUMBER: 050-160061.00
DATE DRAWN: 10/11/16
SCALE @ A1: 1:100
DRAWN BY: AGR
CHECKED BY: PD

DRAWING NUMBER: **A-12000** REVISION: **2**