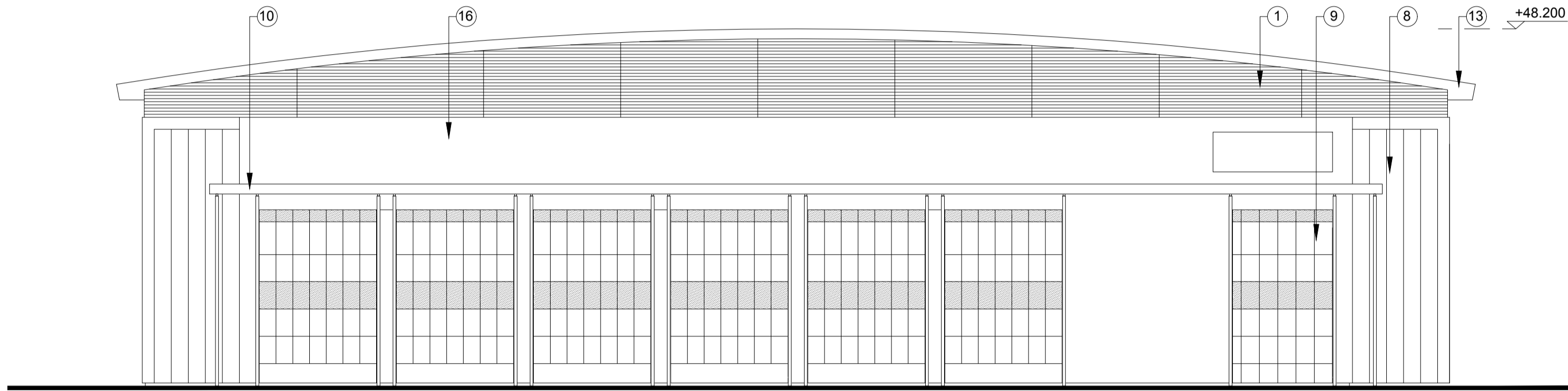
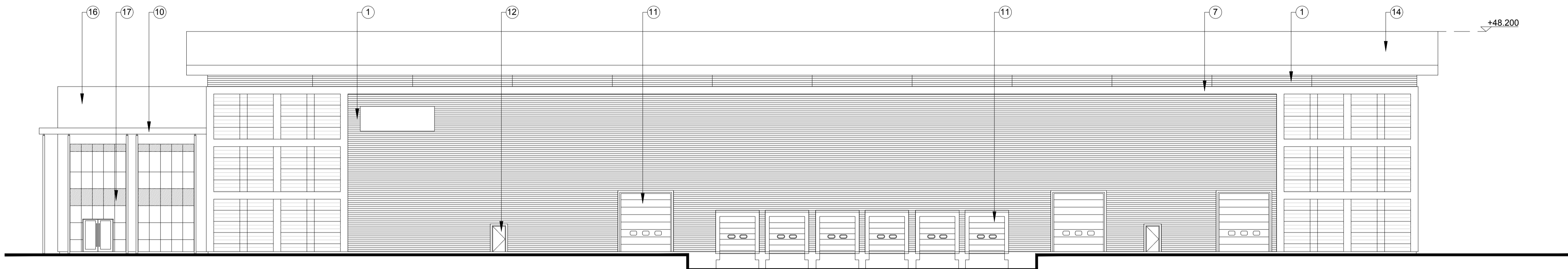


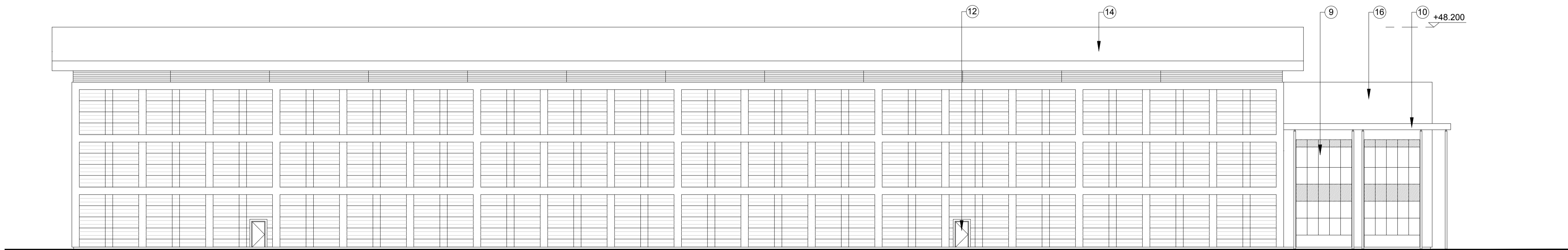
WEST ELEVATION



EAST ELEVATION



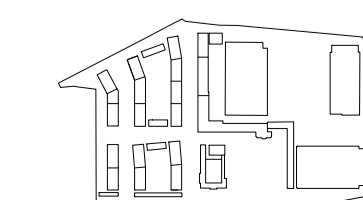
NORTH ELEVATION



SOUTH ELEVATION

SCHEDULE OF FACING MATERIALS

1	Profiled Wall Cladding 1	Horizontally laid trapezoidal profiled steel cladding Finish: Colourcoat Prisma: Silver metallic RAL 9006
2	Profiled Wall Cladding 2	Vertically laid trapezoidal profiled steel cladding Finish: Colourcoat Prisma: Grey Aluminium RAL 9007
3	Flat Panel Wall Cladding 1	Flat metal faced composite cladding panels Finish: Colourcoat Prisma Colour: Silver metallic RAL 9006
4	Flat Panel Wall Cladding 2	Rainscreen cladding panels Finish: Colourcoat Prisma Colour: Silver Metallic RAL 9006 (Light Grey)
5	Flat Panel Wall Cladding 3	Rainscreen cladding panels Finish: Colourcoat Prisma Colour: Sirius (Mid Grey)
6	Flat Panel Wall Cladding 4	Rainscreen cladding panels Finish: Colourcoat Prisma Colour: Orion (Darker Grey)
7	White Feature Band	Vertical & horizontal feature band Colour: Colourcoat Prisma: White RAL 9010
8	Dark Grey Flat Panel	Flat metal faced composite cladding panels Colour: Colourcoat Prisma: Zeus
9	Curtain Walling / Windows	Clear Anti-Sun double glazing in polyester powder coated aluminium curtain walling system. Colour: Slate Grey RAL 7012
10	Canopy	Powder coated aluminium entrance canopy with bullnose edge Finish: Polyester Powder Coat Colour: Grey Aluminium RAL 9007
11	Loading Doors	Aluminium faced composite sectional doors Finish: Matching adjacent cladding
12	Personnel Doors	Steel doors and frames Finish: Colourcoat Prisma: Matching adjacent cladding or Silver Metallic (RAL 9006)
13	Eaves/verge flashing	Powder coated aluminium eaves/verge flashing and soffit Colour: Grey Aluminium RAL 9007
14	Roof	1000 x 32R profiled steel roof decking with GRP rooflights Finish: HPS200 Colour: Albatross
15	Brise Soleil	To match canopy, Grey Aluminium RAL 9007
16	Render	Smooth concrete render Colour: White RAL 9010
17	Spandrel Panels	In polyester powder coated aluminium curtain walling system Colour: Mint



DATE	REV	DESCRIPTION	CHK

CONSULTANTS DWG NO: _____

MICHAEL SPARKS ASSOCIATES
 11 Plato Place, St Dionis Road
 London SW6 4TU
 Telephone +44 (0)20 77366162
 info@msa-architects.co.uk

FORMER NESTLE FACTORY, HAYES
ELEVATIONS UNIT 1

SCALE 1:200 @ A1

MS 203

ISSUE **P3**