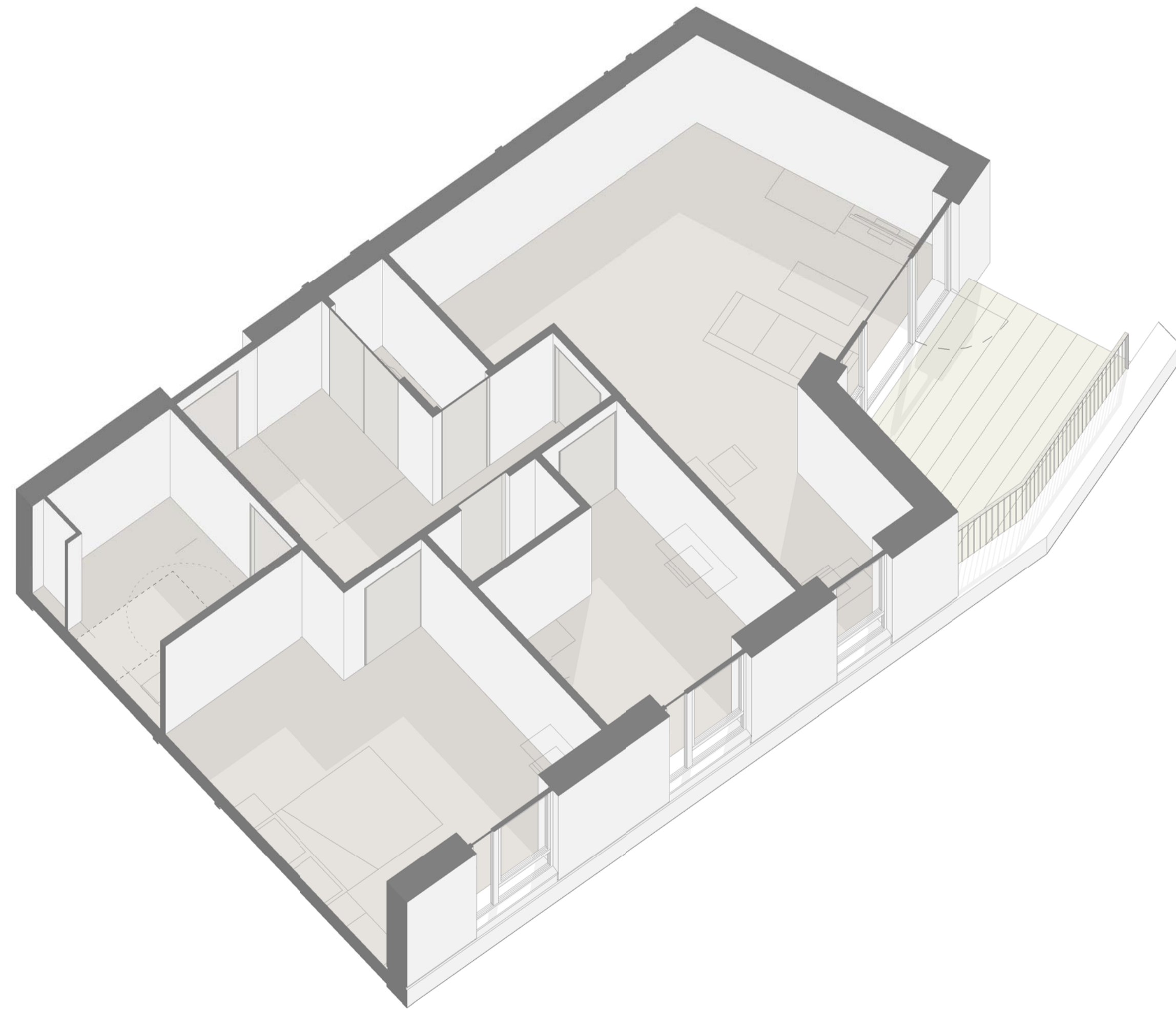
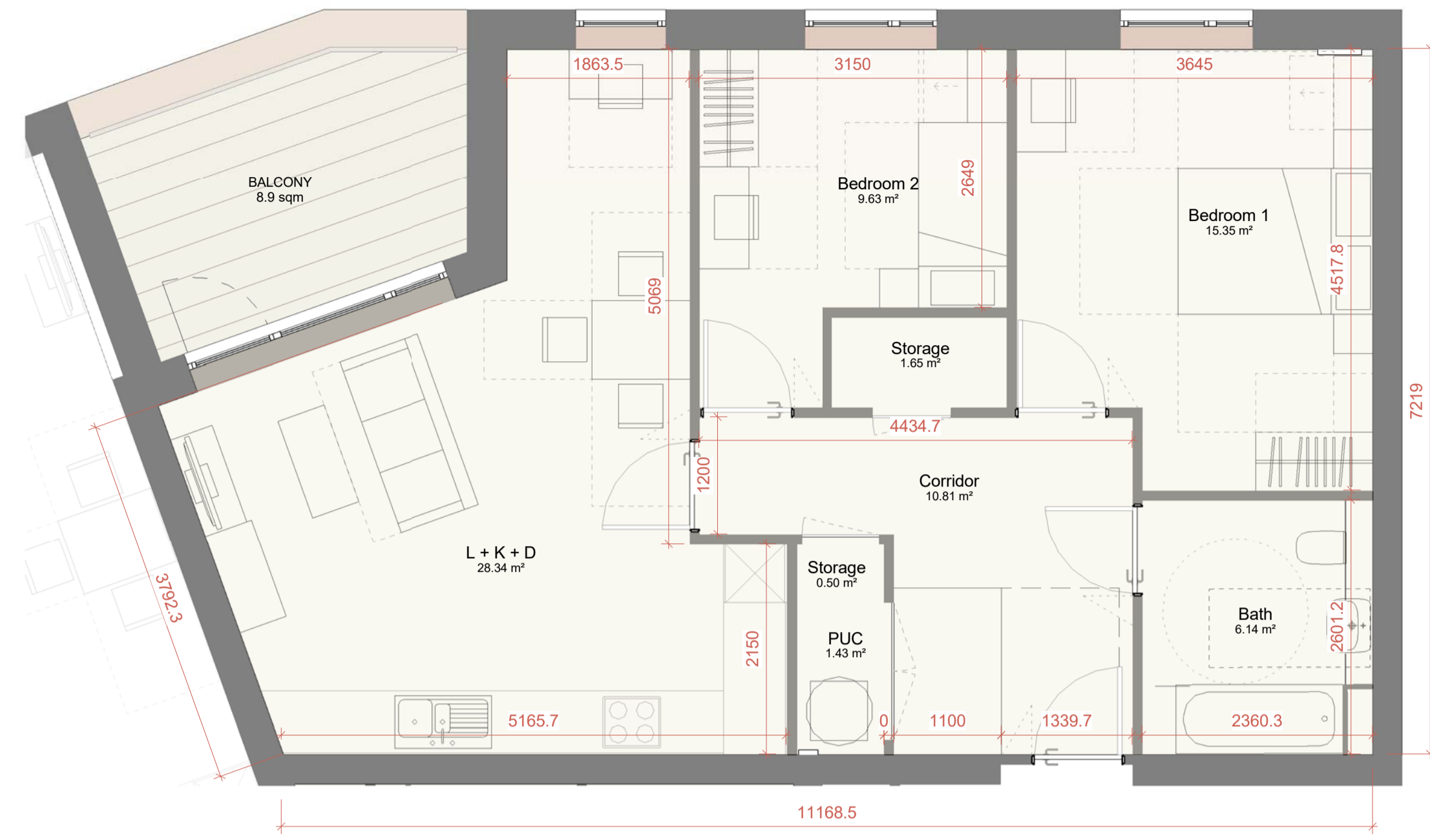


TYPE F



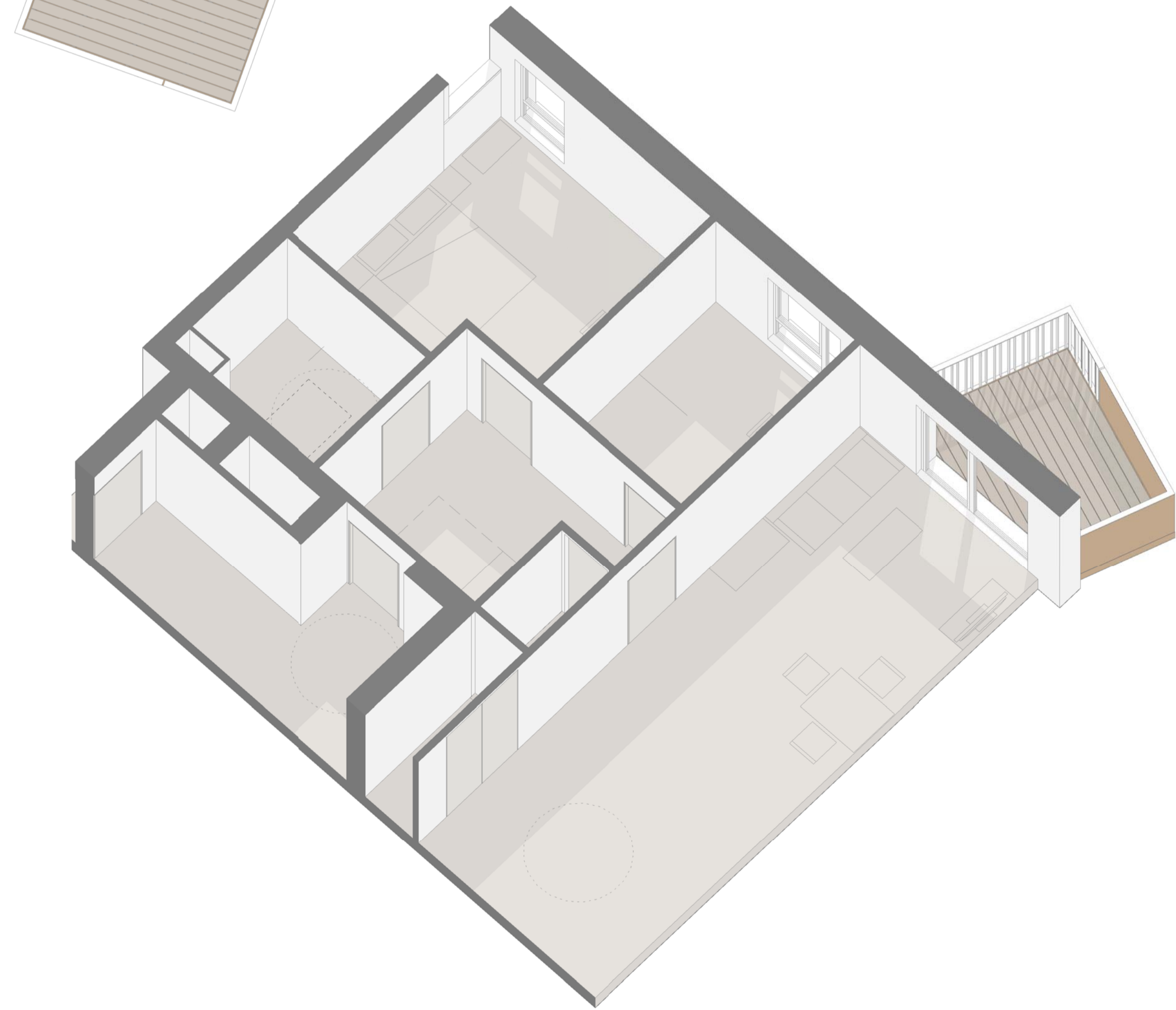
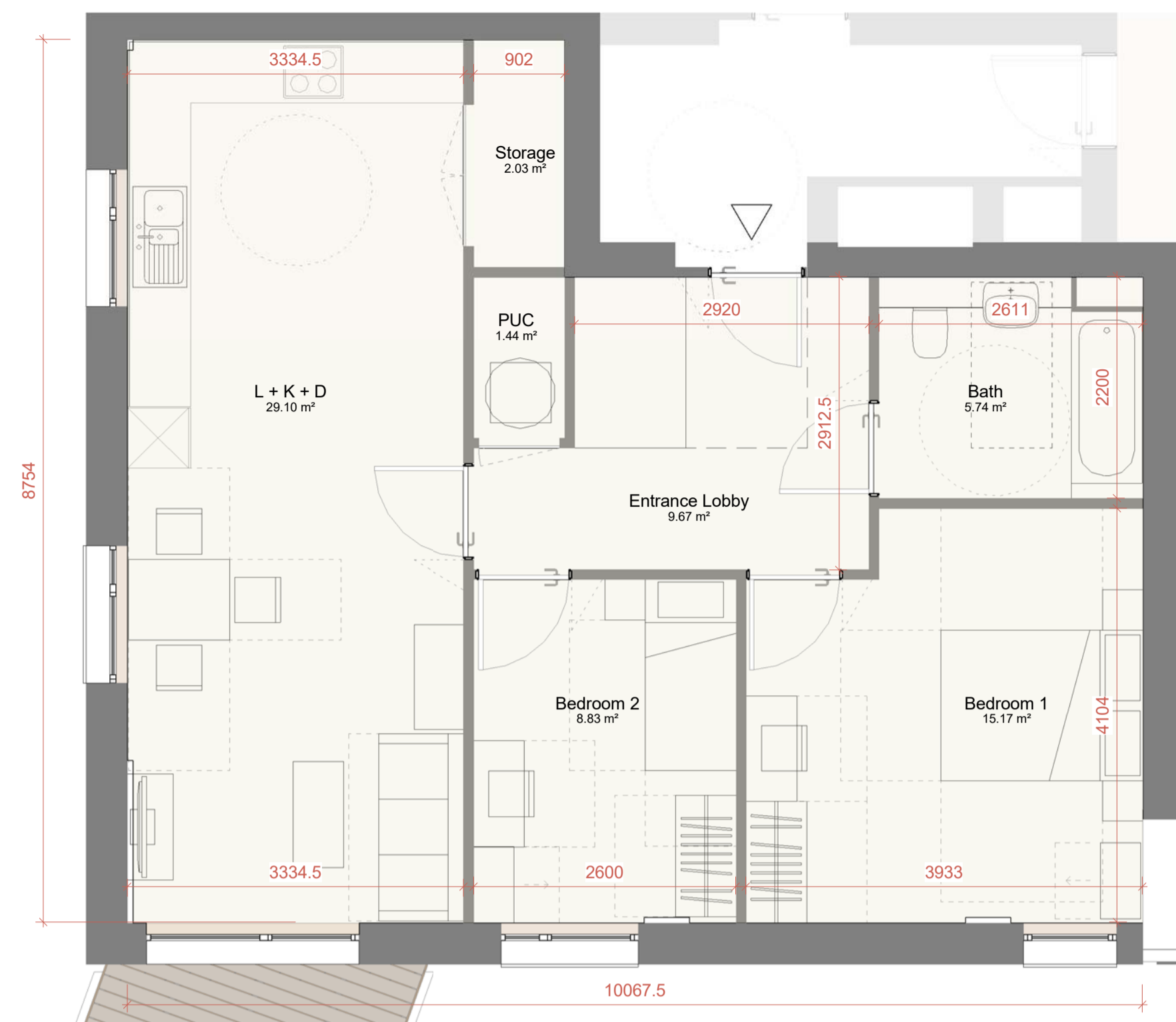
Type	Bed No	People No	Bath No	GIA
F - ACC Accessible Flat	2	3	1	77.33 m <sup>2</sup>

Room	Net Area Sqm	Net Area Sqft
Bath	6.14 m <sup>2</sup>	66 SF
Bedroom 1	15.35 m <sup>2</sup>	165 SF
Bedroom 2	9.63 m <sup>2</sup>	104 SF
Corridor	10.81 m <sup>2</sup>	116 SF
L + K + D	28.34 m <sup>2</sup>	305 SF
PUC	1.43 m <sup>2</sup>	15 SF
Storage	1.65 m <sup>2</sup>	18 SF
Storage	0.50 m <sup>2</sup>	5 SF
	73.85 m <sup>2</sup>	795 SF

M4(3) FLAT - 2 BED 3 PERSONS	LHDG Requirements	COMPLIANT	FORMER NESTLE FACTORY
Combined Kitchen/Living/Dining	27 sqm	✓	27.85 sqm
Worktop Kitchen (length)	6.53 m	✓	6.56 m
Transfer Space at Entrance	1.10 x 1.70 m	✓	See Plan
Double Room 1 (Principal)	13.5 sqm w: 3.00 m	✓	15.35 sqm 3.6 m
Single Room 1	8.5 sqm w: 2.40 m	✓	9.63 sqm 3.1 m
Bathroom	As per Diagram 3.11	✓	See Plan
WC with Shower	As per Diagram 3.11	✓	See Plan
Storage	2 sqm	✓	2.15 sqm
Minimum Area Required (sqm) +10%	61+6.1 sqm	✓	76.67 sqm
Minimum Outdoor Amenity Space (sqm)	6 sqm	✓	8.9 sqm

TYPE G



Type	Bed No	People No	Bath No	GIA
G - ACC Accessible Flat	2	3	1	74.76 m <sup>2</sup>

Room	Net Area Sqm	Net Area Sqft
Bath	5.74 m <sup>2</sup>	62 SF
Bedroom 1	15.17 m <sup>2</sup>	163 SF
Bedroom 2	8.83 m <sup>2</sup>	95 SF
Entrance Lobby	9.67 m <sup>2</sup>	104 SF
L + K + D	29.10 m <sup>2</sup>	313 SF
PUC	1.44 m <sup>2</sup>	16 SF
Storage	2.03 m <sup>2</sup>	22 SF
Storage		
	71.98 m <sup>2</sup>	775 SF

M4(3) FLAT - 2 BED 3 PERSONS	LHDG Requirements	COMPLIANT	FORMER NESTLE FACTORY
Combined Kitchen/Living/Dining	27 sqm	✓	29.10 sqm
Worktop Kitchen (length)	6.53 m	✓	7.5 m
Transfer Space at Entrance	1.10 x 1.70 m	✓	See Plan
Double Room 1 (Principal)	13.5 sqm w: 3.00 m	✓	15.17 sqm 3.3 m
Single Room 1	8.5 sqm w: 2.40 m	✓	8.83 sqm 2.6 m
Bathroom	As per Diagram 3.11	✓	See Plan
WC with Shower	As per Diagram 3.11	✓	See Plan
Storage	2 sqm	✓	2.03 sqm
Minimum Area Required (sqm) +10%	61+6.1 sqm	✓	74.52 sqm
Minimum Outdoor Amenity Space (sqm)	6 sqm	✓	6 sqm

