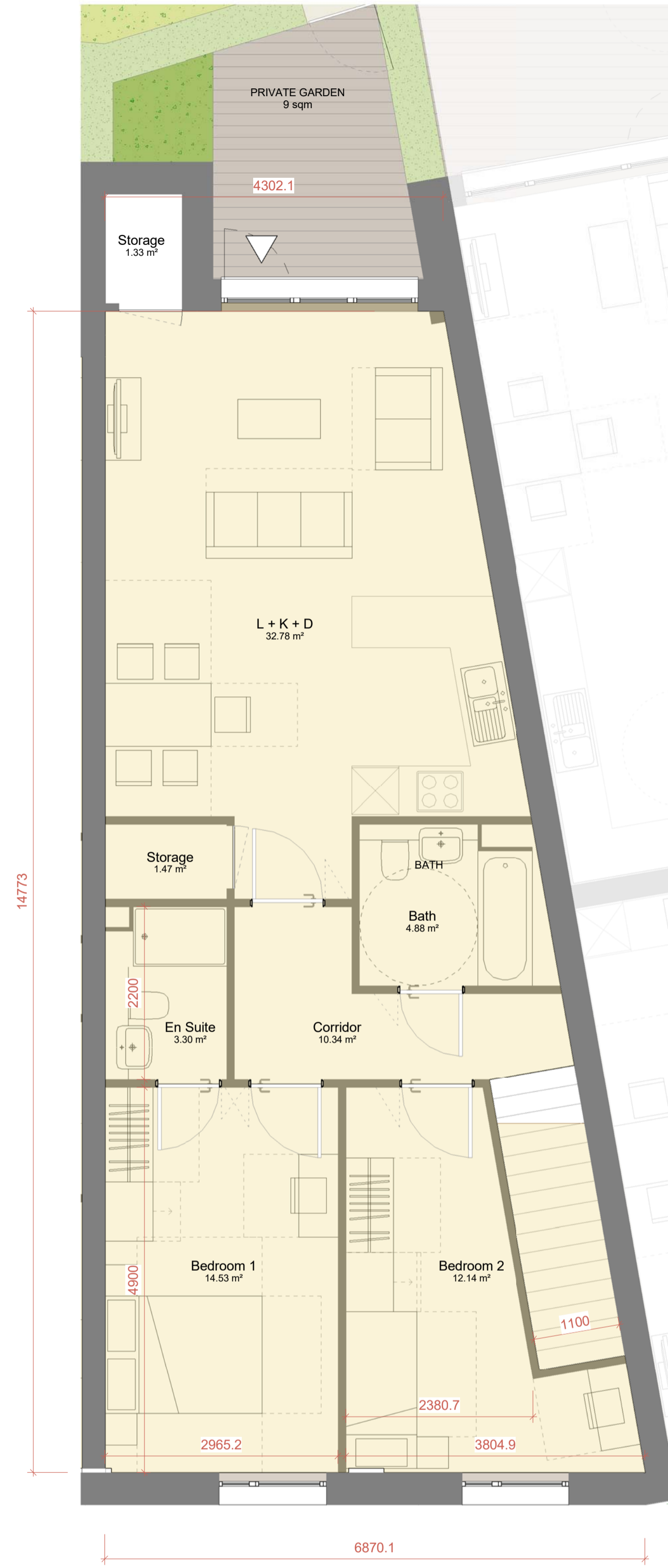


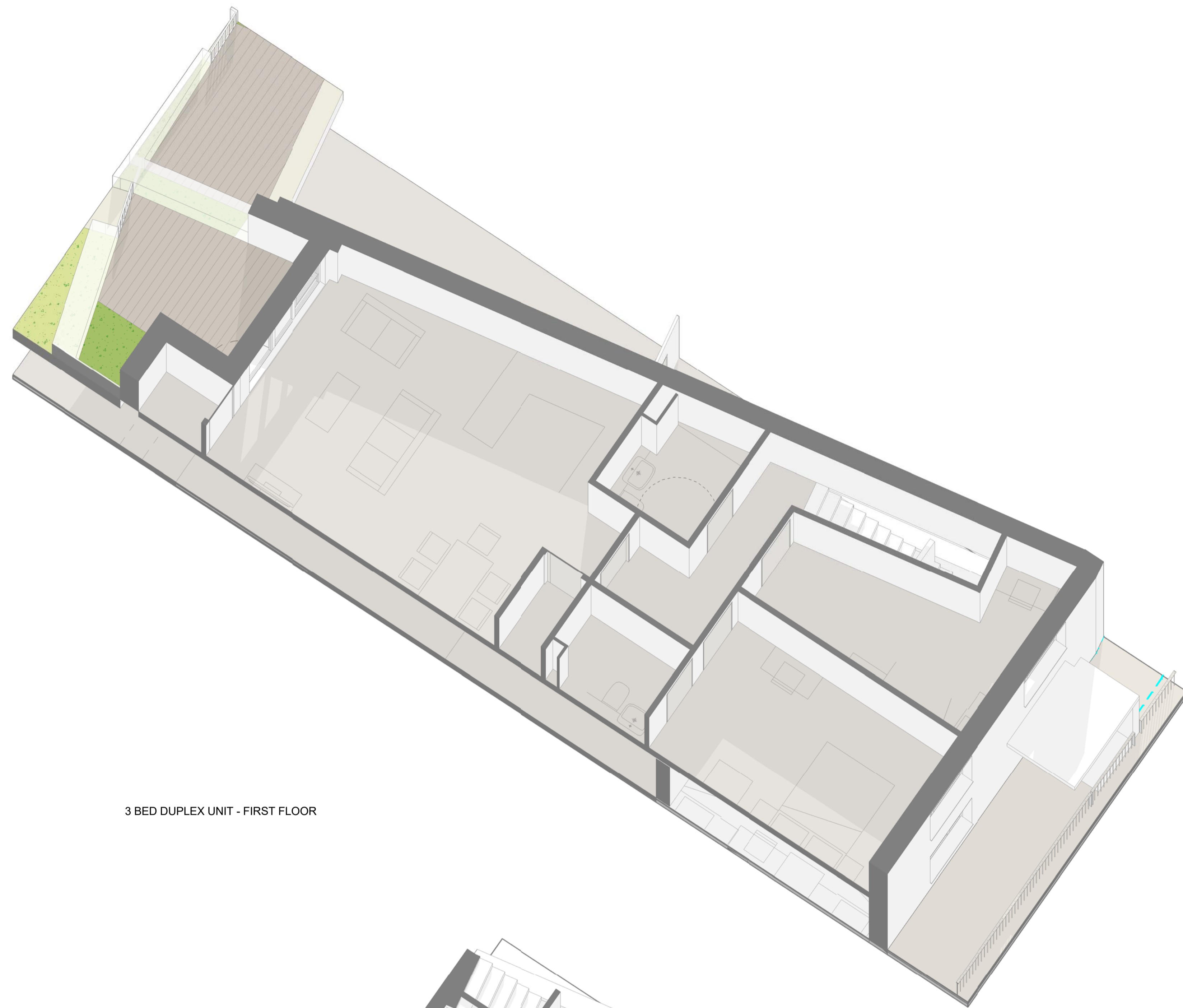
TYPE C



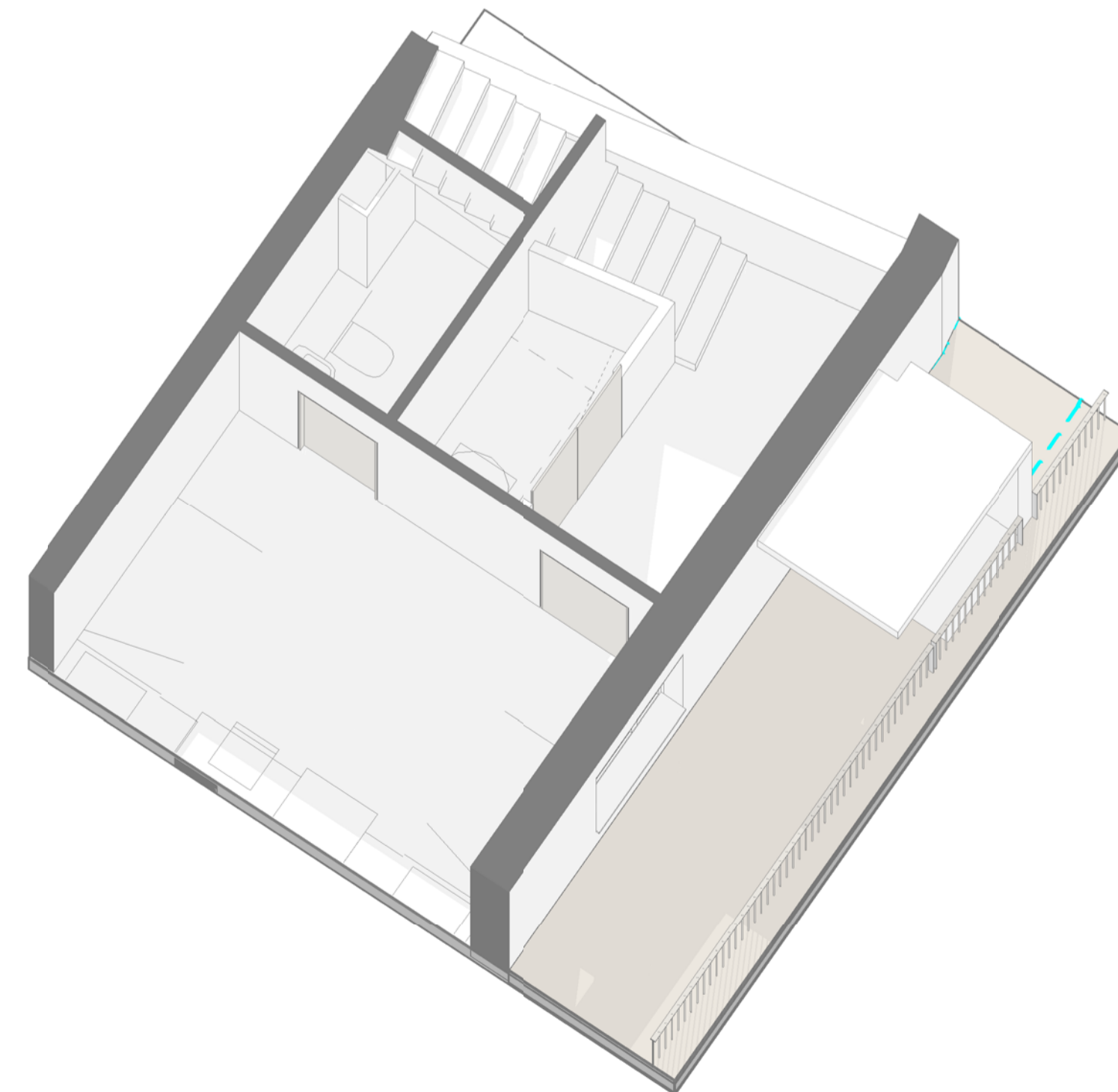
3 BED DUPLEX UNIT - GROUND FLOOR



3 BED DUPLEX UNIT - FIRST FLOOR



3 BED DUPLEX UNIT - FIRST FLOOR



3 BED DUPLEX UNIT - GROUND FLOOR

Type	Bed No	People No	Bath No	GIA
C - DUPLEX				
Duplex	3	5	2	107.43 m²

Room	Net Area Sqm	Net Area Sqft
Bath	4.88 m²	52 SF
Bedroom 1	14.53 m²	156 SF
Bedroom 2	12.14 m²	131 SF
Bedroom 3	13.17 m²	142 SF
Corridor	10.34 m²	111 SF
En Suite	3.30 m²	36 SF
En Suite	3.32 m²	36 SF
Entrance Lobby	6.97 m²	75 SF
L + K + D	32.78 m²	353 SF
PUC	1.62 m²	17 SF
Storage	1.47 m²	16 SF
Storage	1.09 m²	12 SF
Storage	1.33 m²	14 SF
	106.93 m²	1151 SF

DUPLEX - 3 BED 5 PERSONS	LHDG Requirements	COMPLIANT	FORMER NESTLE FACTORY
Combined Kitchen/Living/Dining	As per Appendix D	✓	See Plan
Double Room 1 (Principal)	11.5 sqm w: 2.75 m	✓	14.53 sqm 2.38 m
Double Room 2	w: 2.55 m	✓	12.14 sqm 2.55 m
Single Room 1	7.5 sqm w: 2.15 m	✓	13.17 sqm 2.96 m
Bathroom at same floor of Principal Bed.	As per Diagram 2.5	✓	See Plan
WC with Shower at entrance storey	As per Diagram 2.5	✓	See Plan
Storage	2.5 sqm	✓	3.59 sqm
Minimum Area Required (sqm)	93 sqm	✓	107.18 sqm
Minimum Outdoor Amenity Space (sqm)	8 sqm	✓	17.2 m

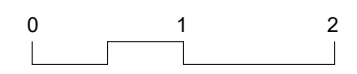
DATE	REV	DESCRIPTION	CHK
170106	14	D2 - Design Freeze Update	AA
170210	15	D4 - Design Freeze Update	AA
170217	16	D5 - Design Freeze Update	SJ
170227	17	D6 - Design Freeze Update	SJ
170327	18	D7 - Design Freeze Update	SJ

CONSULTANTS DWG NO:

MAKOWER ARCHITECTS
 24-26 Great Suffolk Street
 Bankside, London SE1 0UE
 telephone +44 (0)20 7100 5550
 enquiries@makowerarchitects.com

FORMER NESTLE FACTORY, HAYES
BLOCK B - Unit Types - 3B Duplexes

SCALE 1:50 @ A1



MA 542

ISSUE P1

