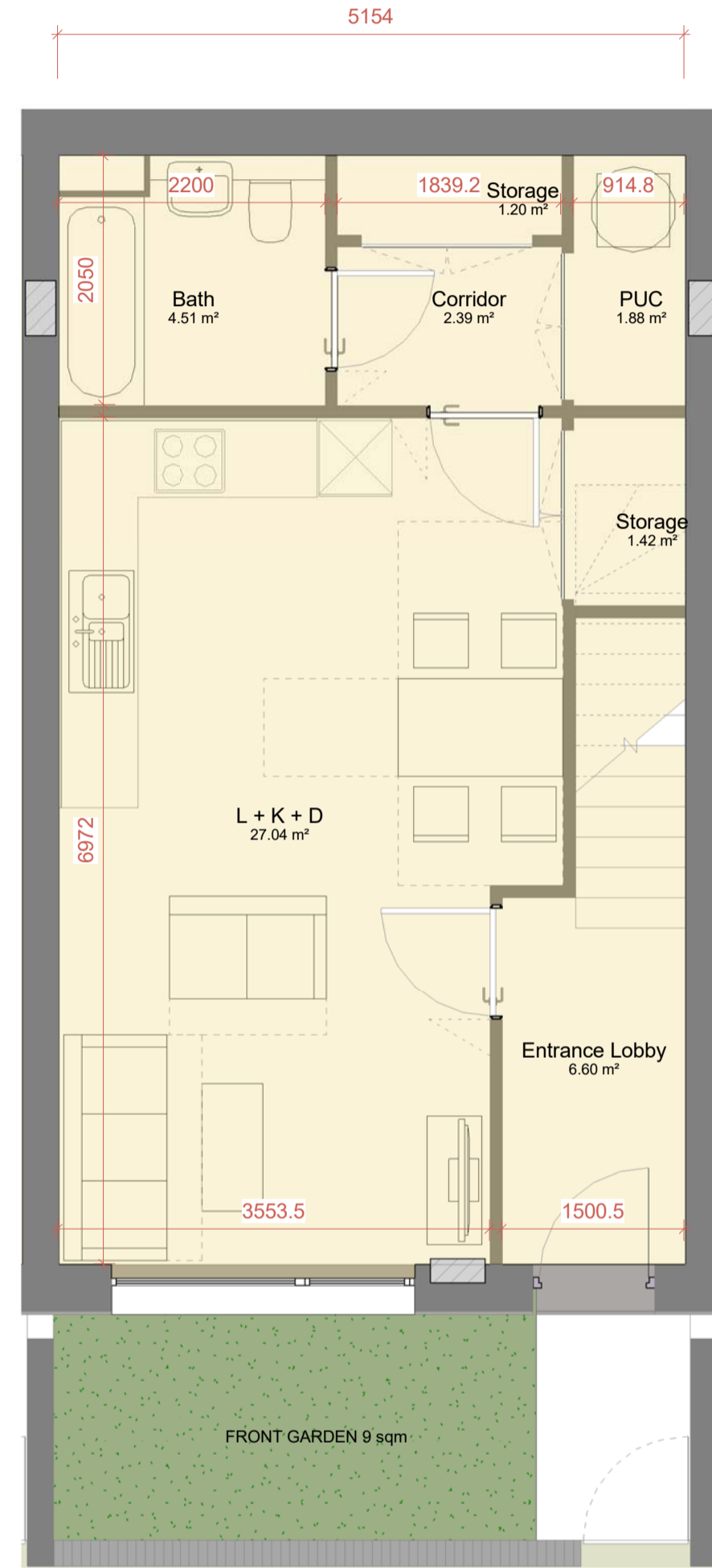
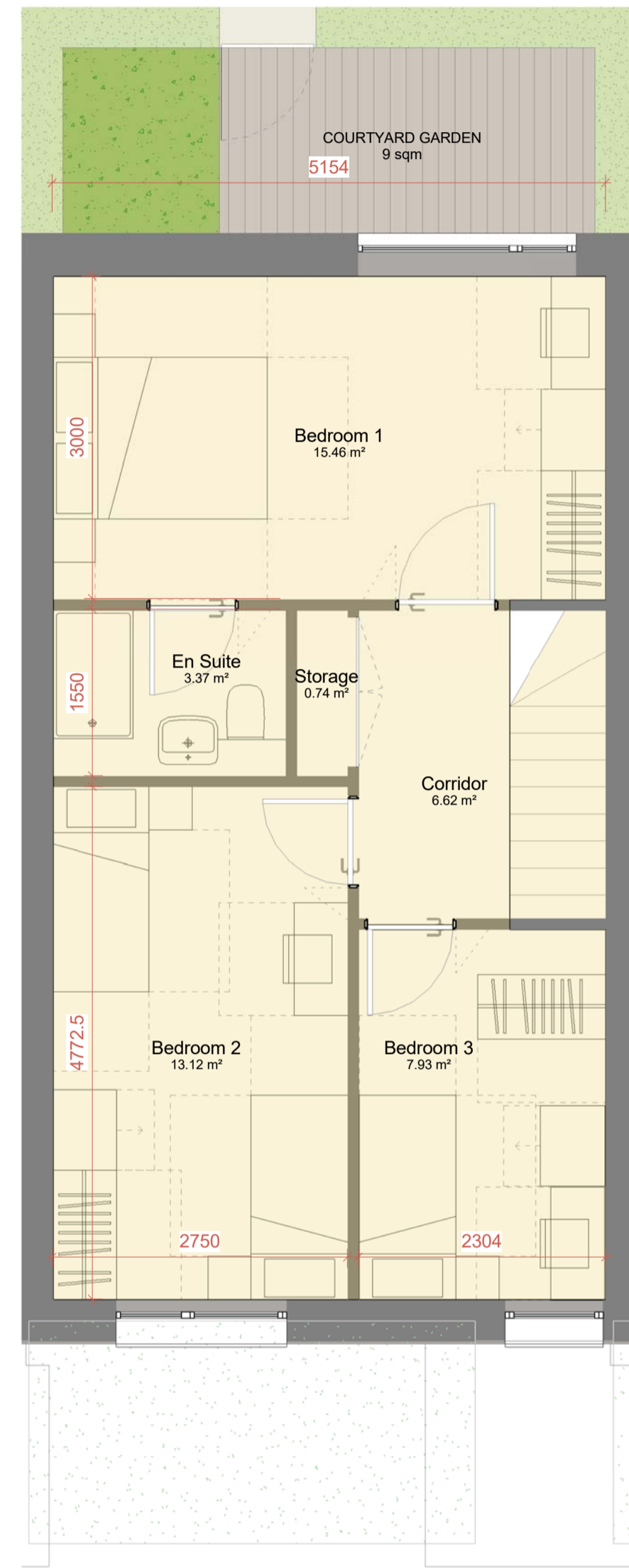


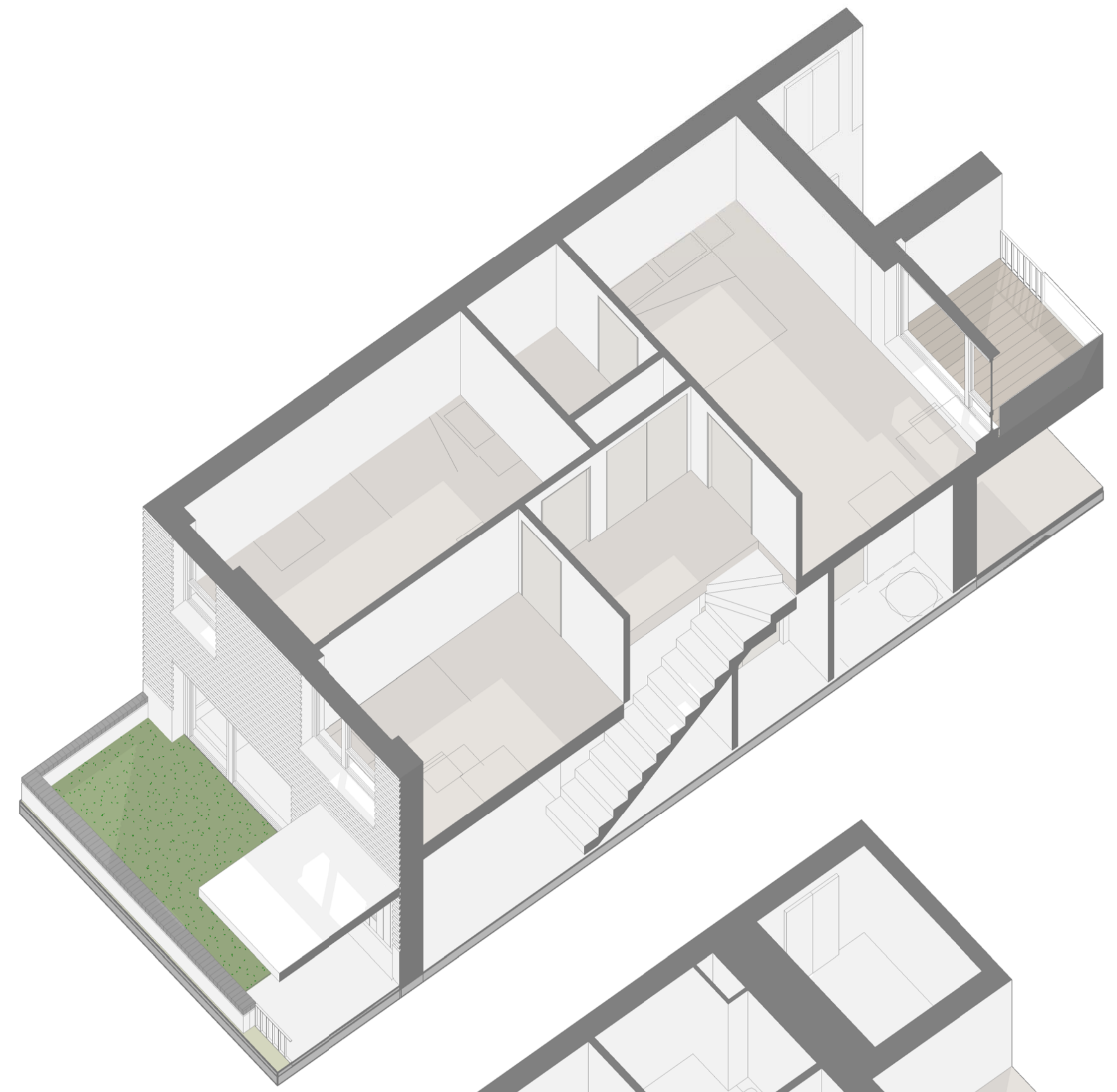
TYPE B



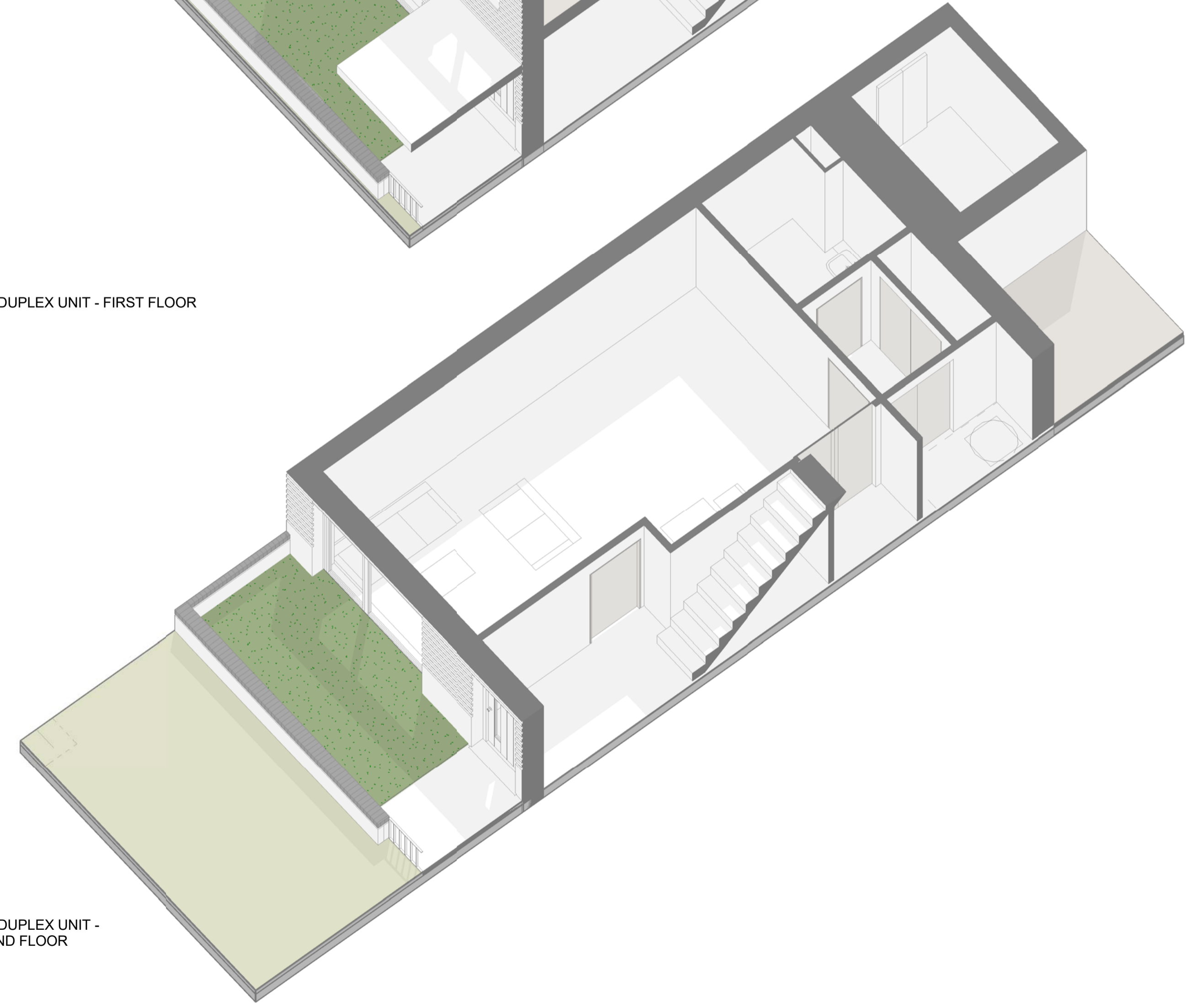
3 BED DUPLEX UNIT - GROUND FLOOR



3 BED DUPLEX UNIT - FIRST FLOOR



3 BED DUPLEX UNIT - FIRST FLOOR



3 BED DUPLEX UNIT - GROUND FLOOR

Type	Bed No	People No	Bath No	GIA
B - DUPLEX	3	5	2	93.59 m²
Duplex	3	5	2	93.59 m²
Room	Net Area Sqm	Net Area Sqft		
Bath	4.49 m²	48 SF		
Bedroom 1	15.46 m²	166 SF		
Bedroom 2	13.05 m²	141 SF		
Bedroom 3	7.98 m²	86 SF		
Corridor	2.39 m²	26 SF		
Corridor	6.65 m²	72 SF		
En Suite	3.35 m²	36 SF		
Entrance Lobby	6.66 m²	72 SF		
L + K + D	26.97 m²	290 SF		
PUC	1.90 m²	20 SF		
Storage	1.44 m²	15 SF		
Storage	1.20 m²	13 SF		
Storage	0.74 m²	8 SF		
	92.27 m²	993 SF		

DUPLEX - 3 BED 5 PERSONS	LHDG Requirements	COMPLIANT	FORMER NESTLE FACTORY
Combined Kitchen/Living/Dining	As per Appendix D	✓	See Plan
Double Room 1 (Principal)	11.5 sqm w: 2.75 m	✓	15.46 sqm 3 m
Double Room 2	w: 2.55 m	✓	13.05 sqm 2.75 m
Single Room 1	7.5 sqm w: 2.15 m	✓	7.98 sqm 2.3 m
Bathroom at same floor of Principal Bed.	As per Diagram 2.5	✓	See Plan
WC with Shower at entrance storey	As per Diagram 2.5	✓	See Plan
Storage	2.5 sqm	✓	3.38 sqm
Minimum Area Required (sqm)	93 sqm	✓	93.33 sqm
Minimum Outdoor Amenity Space (sqm)	8 sqm	✓	18.1 m

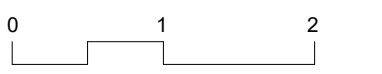
DATE	REV	DESCRIPTION	CHK
170106	14	D2 - Design Freeze Update	AA
170210	15	D4 - Design Freeze Update	AA
170217	16	D5 - Design Freeze Update	SJ
170227	17	D6 - Design Freeze Update	SJ
170327	18	D7 - Design Freeze Update	SJ

CONSULTANTS DWG NO:

MAKOWER ARCHITECTS
 24-26 Great Suffolk Street
 Bankside, London SE1 0UE
 telephone +44 (0)20 7100 5550
 enquiries@makowerarchitects.com

FORMER NESTLE FACTORY, HAYES
BLOCK B - Unit Types - 3B Duplexes

SCALE 1:50 @ A1



MA 541

ISSUE P1

