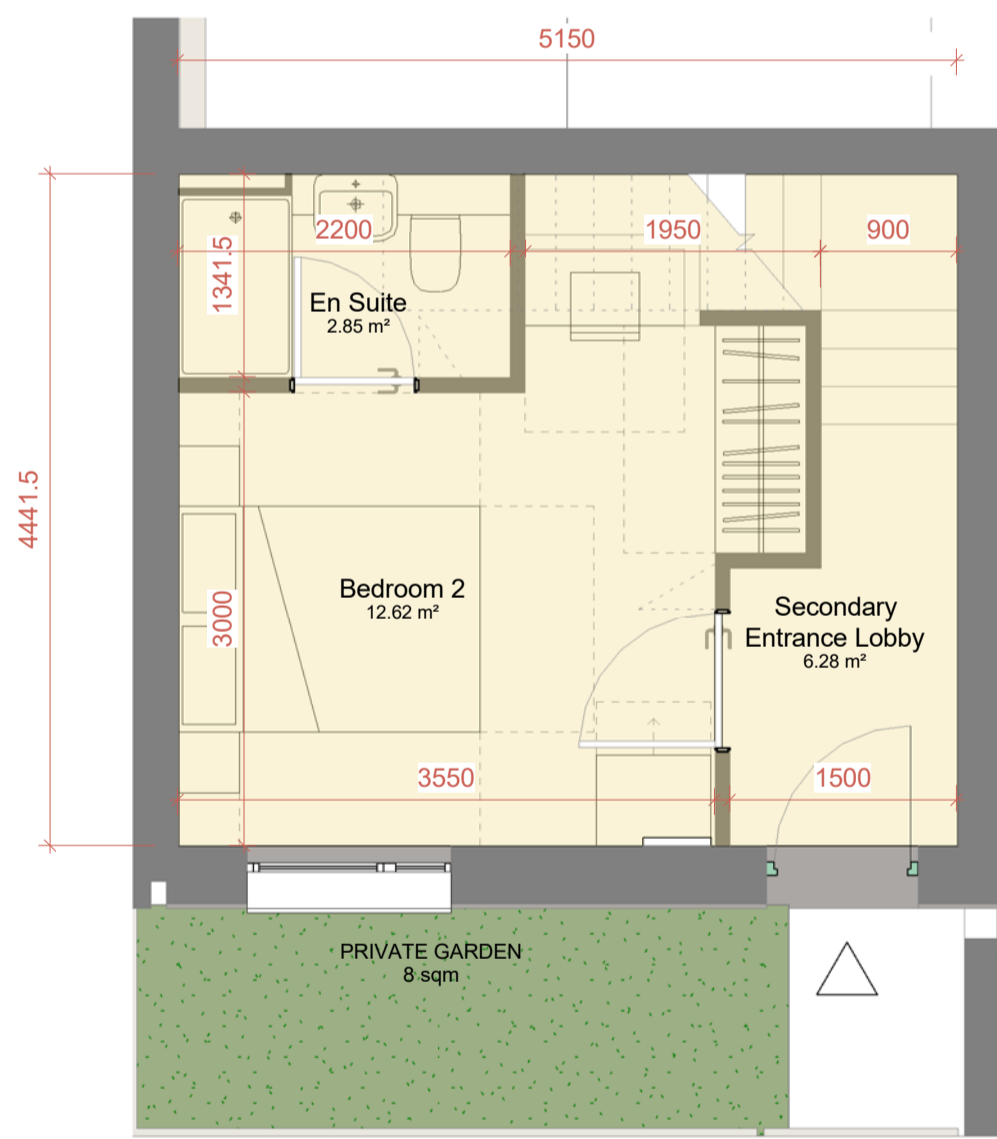
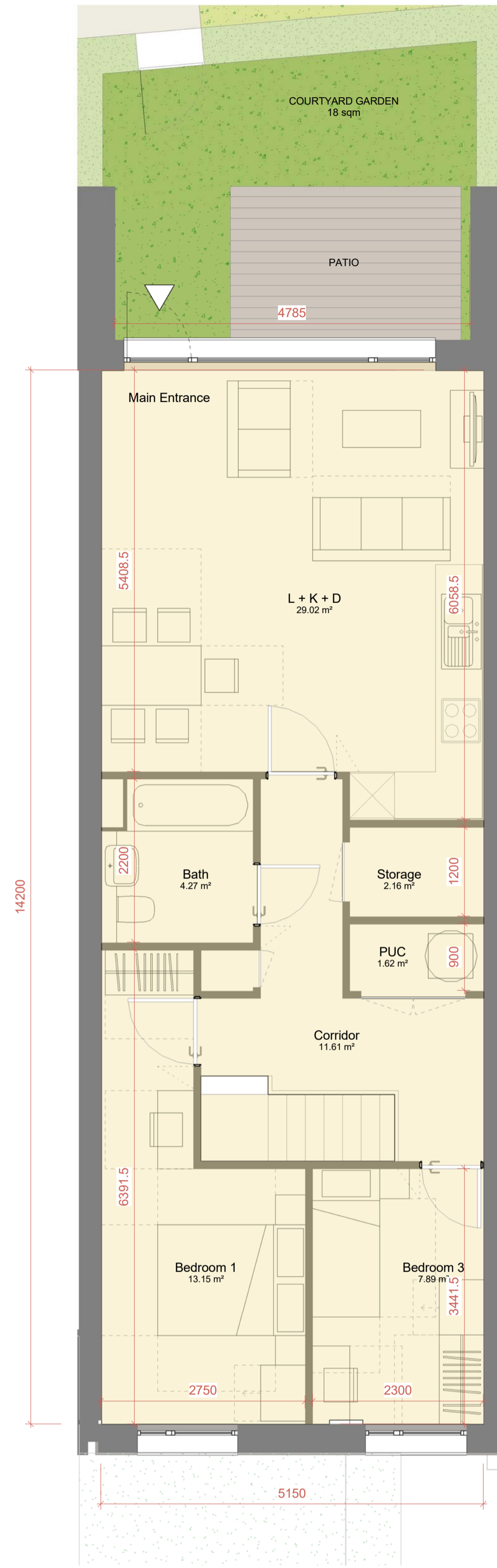


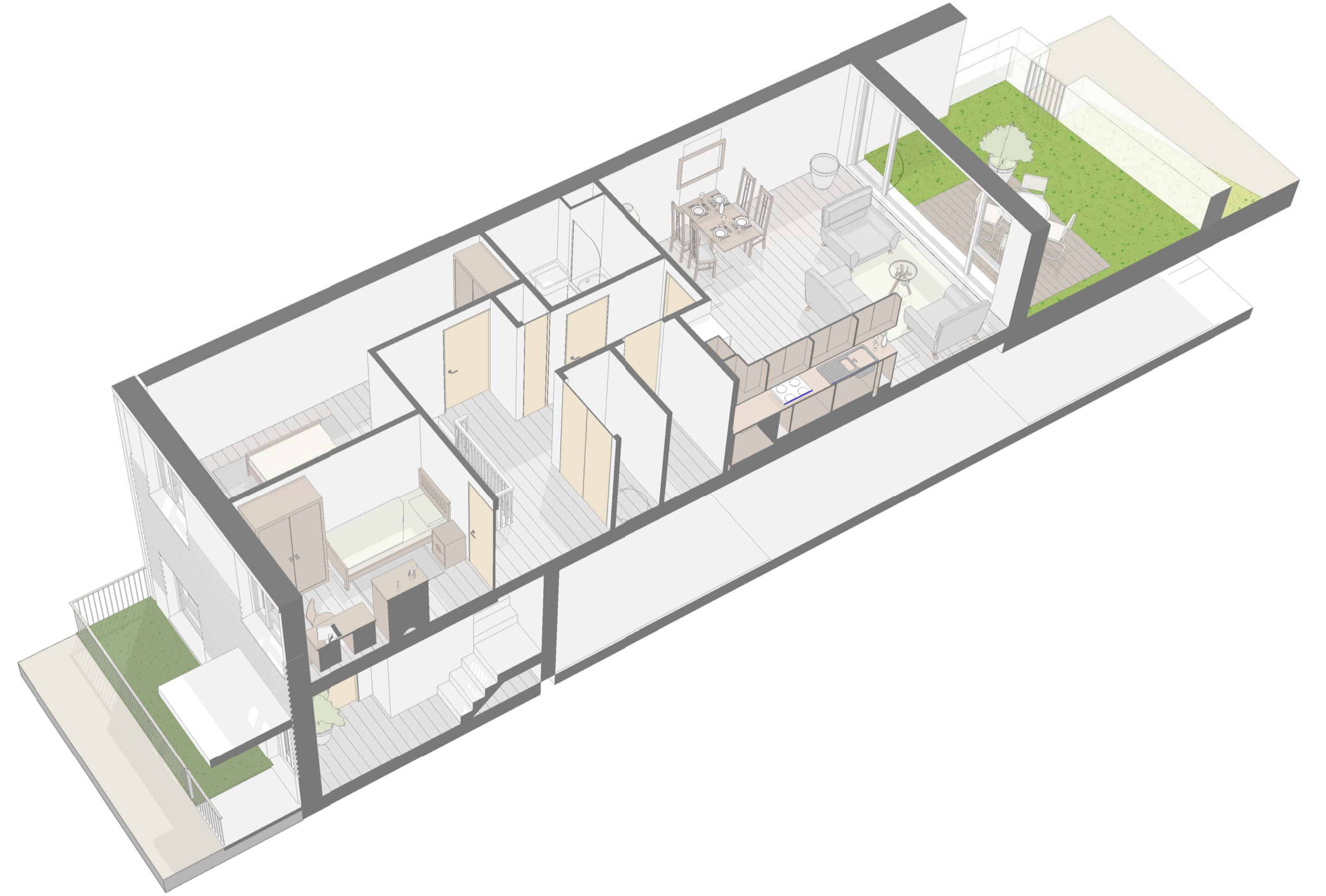
TYPEA



GROUND FLOOR



FIRST FLOOR



Type	Bed No	People No	Bath No	GIA
A - DUPLEX				
Duplex	3	5	2	93.87 m ²
Room	Net Area Sqm	Net Area Sqft		
Bath	4.27 m ²	46 SF		
Bedroom 1	13.15 m ²	142 SF		
Bedroom 2	12.62 m ²	136 SF		
Bedroom 3	7.88 m ²	85 SF		
Corridor	11.61 m ²	125 SF		
En Suite	2.85 m ²	31 SF		
Entrance Lobby	6.28 m ²	68 SF		
L + K + D	29.02 m ²	312 SF		
PUC	1.62 m ²	17 SF		
Storage	2.16 m ²	23 SF		
	91.47 m ²	985 SF		

DUPLEX - 3 BED 5 PERSONS	LHDG Requirements	COMPLIANT	FORMER NESTLE FACTORY
Combined Kitchen/Living/Dining	As per Appendix D	✓	See Plan
Double Room 1 (Principal)	11.5 sqm w: 2.75 m	✓	13.15 sqm 2.75 m
Double Room 2	w: 2.55 m	✓	12.62 sqm 3.55 m
Single Room 1	7.5 sqm w: 2.15 m	✓	7.88 sqm 2.3 m
Bathroom at same floor of Principal Bed.	As per Diagram 2.5	✓	See Plan
WC with Shower at entrance storey	As per Diagram 2.5	✓	See Plan
Storage	2.5 sqm	✓	2.55 sqm
Minimum Area Required (sqm)	93 sqm	✓	93.44 sqm
Minimum Outdoor Amenity Space (sqm)	8 sqm	✓	25.2 m

DATE	REV	DESCRIPTION	CHK
170106	14	D2 - Design Freeze Update	AA
170210	15	D4 - Design Freeze Update	AA
170217	16	D5 - Design Freeze Update	SJ
170227	17	D6 - Design Freeze Update	SJ
170327	18	D7 - Design Freeze Update	SJ

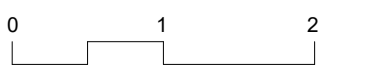
CONSULTANTS DWG NO:

MAKOWER ARCHITECTS
 24-26 Great Suffolk Street
 Bankside, London SE1 0UE
 telephone +44 (0)20 7100 5550
 enquiries@makowerarchitects.com

FORMER NESTLE FACTORY, HAYES
BLOCK B - Unit Types - 3B Duplexes

MA 540

SCALE 1:50 @ A1



ISSUE **P1**

