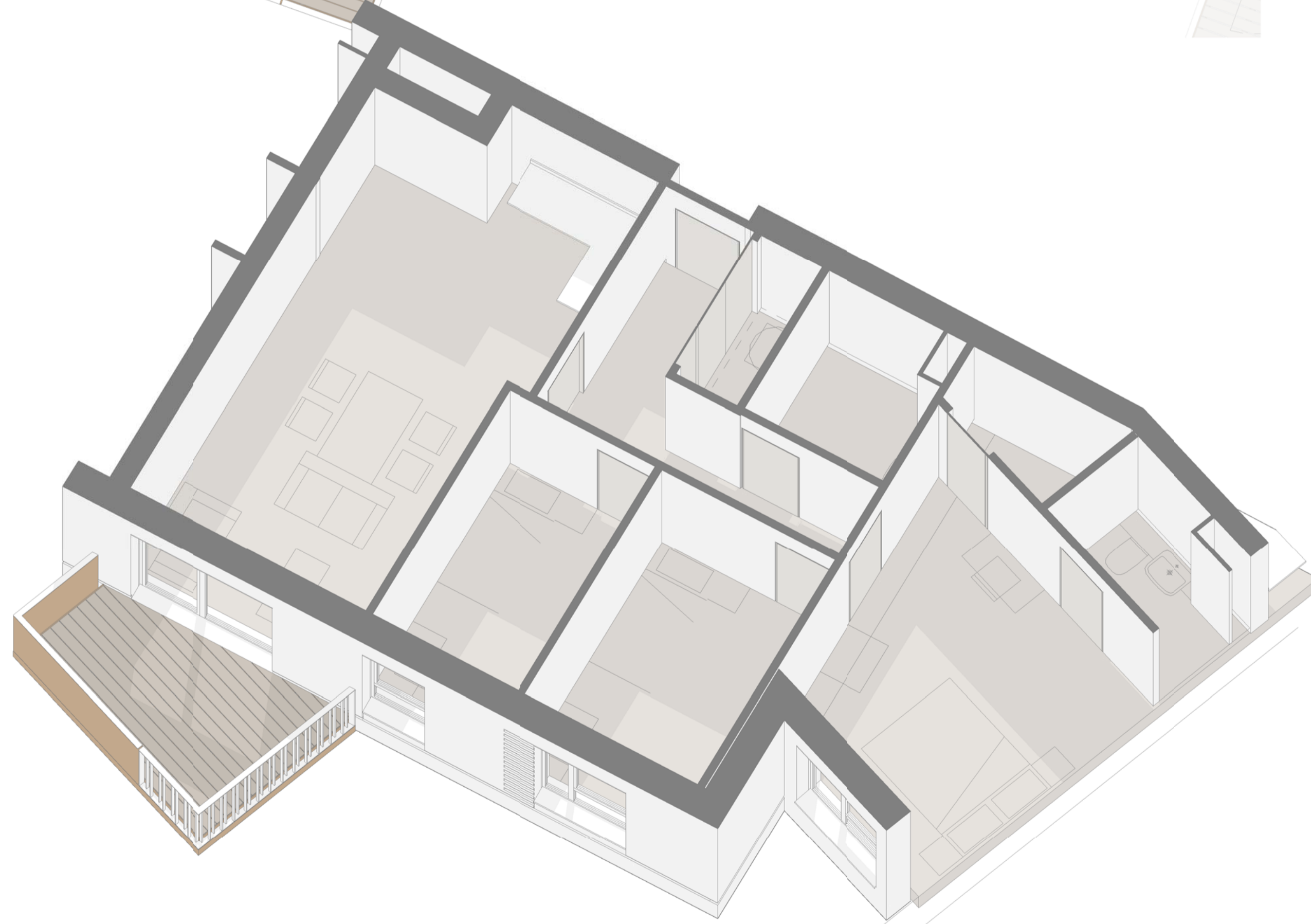
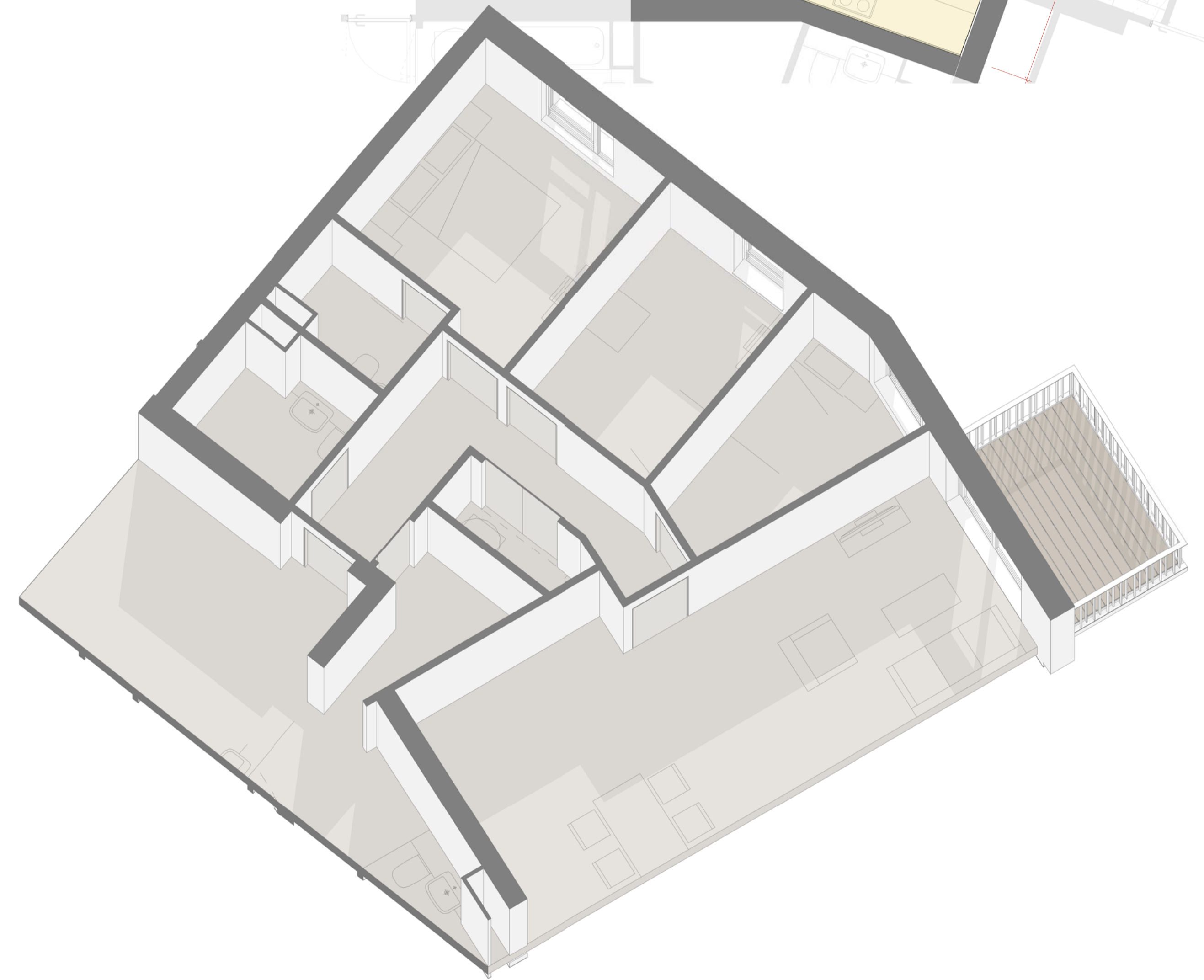
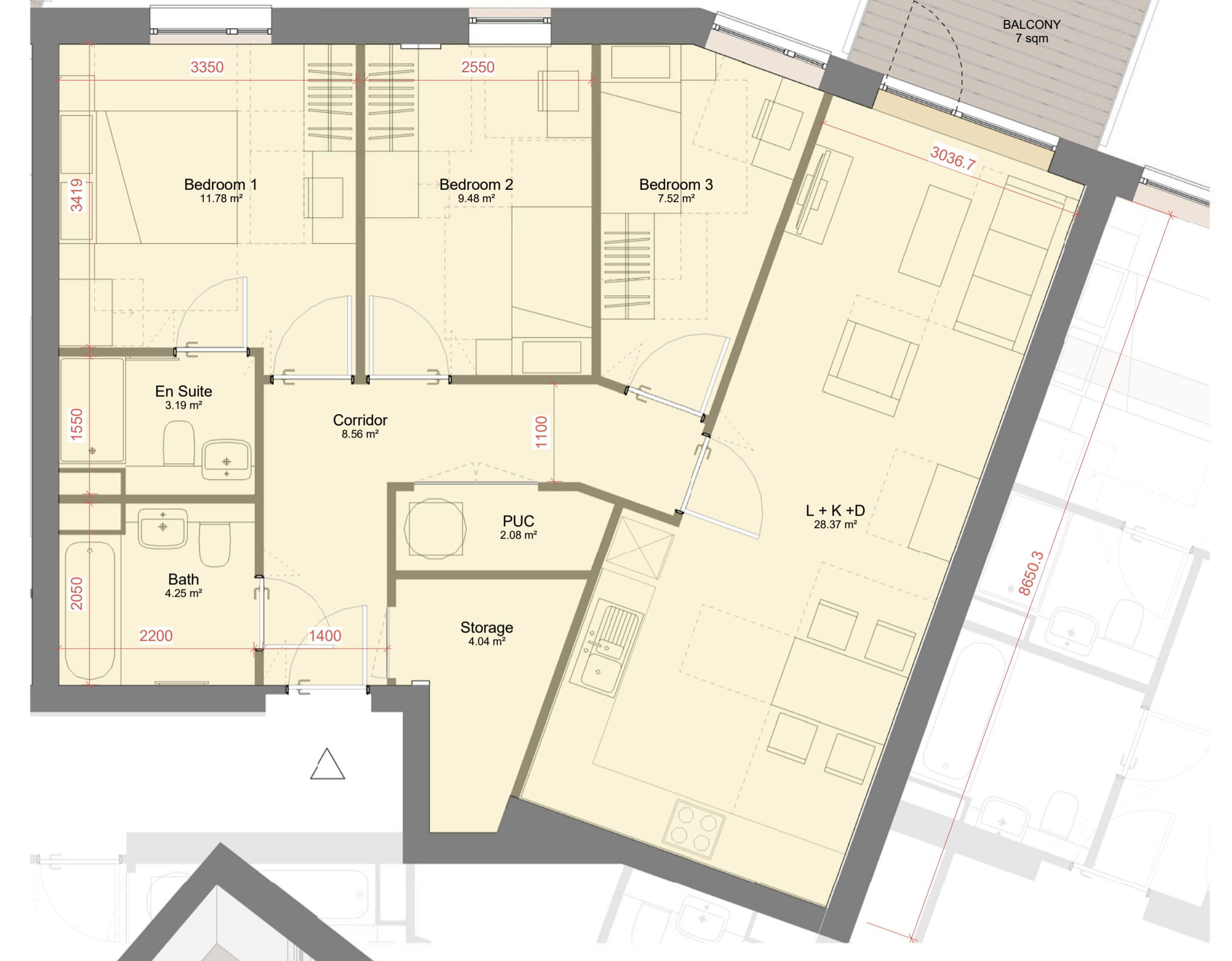


**TYPE B**



**TYPE C**



Type	Bed No	People No	Bath No	GIA
B	3	4	2	79.16 m²
Flat	3	4	2	79.16 m²

Room	Net Area Sqm	Net Area Sqft
Bath	4.27 m²	46 SF
Bedroom 1	13.88 m²	149 SF
Bedroom 2	9.14 m²	98 SF
Bedroom 3	7.71 m²	83 SF
Corridor	7.73 m²	83 SF
En Suite	3.15 m²	34 SF
L + K + D	24.67 m²	266 SF
PUC	1.35 m²	15 SF
Storage	2.48 m²	27 SF
Storage	0.65 m²	7 SF
	75.02 m²	808 SF

Room	LHDG Requirements	COMPLIANT	FORMER NESTLÉ FACTORY
Combined Kitchen/Living/Dining	As per Appendix D	✓	See Plan
Double Room 1 (Principal)	11.5 sqm w: 2.75 m	✓	13.88 sqm 2.75 m
Single Room 1	7.5 sqm w: 2.15 m	✓	11.78 sqm 2.55 m
Single Room 2	7.5 sqm w: 2.15 m	✓	7.71 sqm 2.15 m
Bathroom	As per Diagram 2.5	✓	See Plan
WC with Shower	As per Diagram 2.5	✓	See Plan
Storage	2.5 sqm	✓	3.13 sqm
<b>Minimum Area Required (sqm)</b>	<b>74 sqm</b>	<b>✓</b>	<b>78.92 sqm</b>
<b>Minimum Outdoor Amenity Space (sqm)</b>	<b>7 sqm</b>	<b>✓</b>	<b>7 m</b>

Type	Bed No	People No	Bath No	GIA
C	3	4	2	83.94 m²
Flat	3	4	2	83.94 m²

Room	Net Area Sqm	Net Area Sqft
Bath	4.25 m²	46 SF
Bedroom 1	11.78 m²	127 SF
Bedroom 2	9.48 m²	102 SF
Bedroom 3	7.52 m²	81 SF
Corridor	8.56 m²	92 SF
En Suite	3.19 m²	34 SF
L + K + D	28.37 m²	305 SF
PUC	2.08 m²	22 SF
Storage	4.04 m²	43 SF
Storage	0.65 m²	7 SF
	79.26 m²	853 SF

Room	LHDG Requirements	COMPLIANT	FORMER NESTLÉ FACTORY
Combined Kitchen/Living/Dining	As per Appendix D	✓	See Plan
Double Room 1 (Principal)	11.5 sqm w: 2.75 m	✓	11.78 sqm 2.75 m
Single Room 1	7.5 sqm w: 2.15 m	✓	9.48 sqm 2.55 m
Single Room 2	7.5 sqm w: 2.15 m	✓	7.52 sqm 2.15 m
Bathroom	As per Diagram 2.5	✓	See Plan
WC with Shower	As per Diagram 2.5	✓	See Plan
Storage	2.5 sqm	✓	2.90 sqm
<b>Minimum Area Required (sqm)</b>	<b>74 sqm</b>	<b>✓</b>	<b>83.46 sqm</b>
<b>Minimum Outdoor Amenity Space (sqm)</b>	<b>7 sqm</b>	<b>✓</b>	<b>7 m</b>

DATE	REV	DESCRIPTION	CHK
170106	14	D2 - Design Freeze Update	AA
170210	15	D4 - Design Freeze Update	AA
170217	16	D5 - Design Freeze Update	SJ
170227	17	D6 - Design Freeze Update	SJ
170227	18	D7 - Design Freeze Update	SJ

**MAKOWER ARCHITECTS**  
 24-26 Great Suffolk Street  
 Bankside, London SE1 0UE  
 telephone +44 (0)20 7100 5550  
 enquiries@makowerarchitects.com

**FORMER NESTLÉ FACTORY, HAYES**  
**BLOCK B - Unit Types - 3B Flats**

**MA 531**

CONSULTANTS DWG NO:

SCALE 1:50 @ A1



ISSUE **P1**