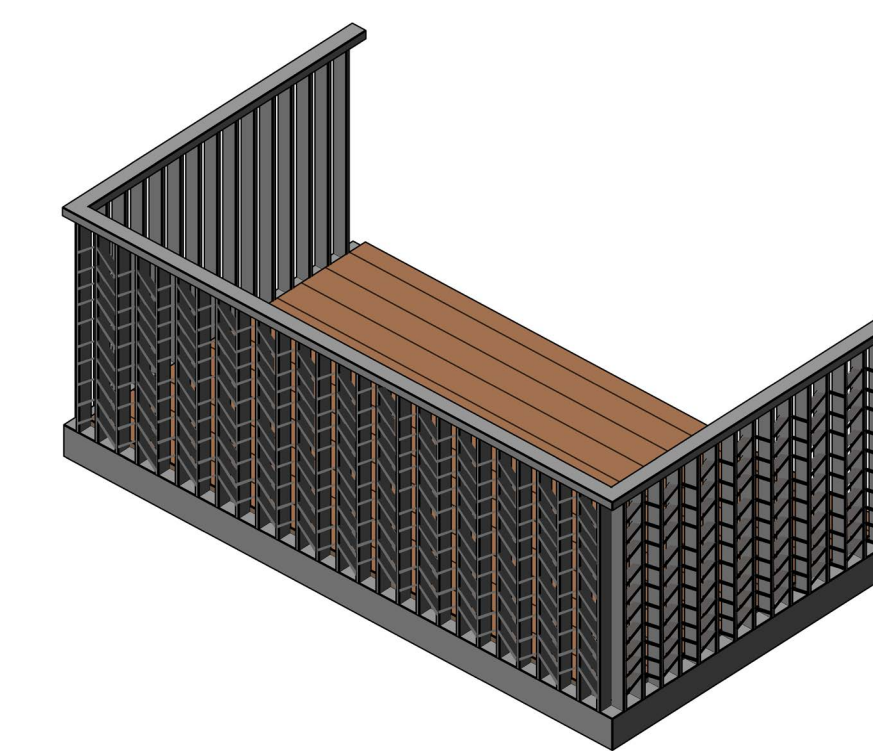




- Parapet: Aluminium capping profile powder coated very dark grey.
- Solder Course brick: Grey stock facing bricks in soldier coursing pattern to highlight roofline.
- Standard brick: Grey stock facing bricks in half-lap stretcher bond aligned with the standard brickline.
- Windows and doors: Aluminium-faced windows, powder coated very dark grey. One opening pane, top floor opens inwards for ease of cleaning, ground and first floors open outward for alternative means of escape.
- Balconies: Exposed RHS ladder structure fixed back through wall to concrete slab edge using thermally broken connector. Recessed lighting fixed into underside of metal soffit. Rainwater tray falls to front edge drip. Vertical steel flat balusters with diagonal pattern welded to steel flat handrail and steel base. Metalwork powder coated very dark grey.
- Duplex entrances: Entrance door recessed into projecting bay to align with balconies above, recessed lighting fixed into underside of entrance soffit. Brushed stainless steel ironmongery, numbering and letterboxes.
- Corduroy brick: White facing bricks in half-lap stretcher bond with every alternate course positioned with a 25mm protrusion beyond the standard brickline.
- Plinth brick: White brick up to the sill height of first floor windows in half-lap stretcher bond aligned with the standard brickline.



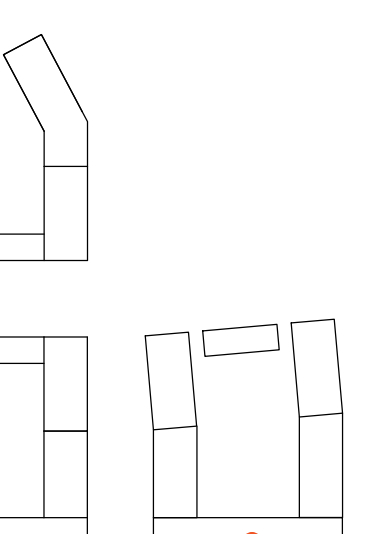
**C6 Balconies**  
Pattern metal rods balustrade



**C6 Main Facade**  
Grey Stock Brick



**C6 Plinth**  
White Brick



**C6 Block Entrance (left) and Detailed Bay Study (right)**

1 : 25

