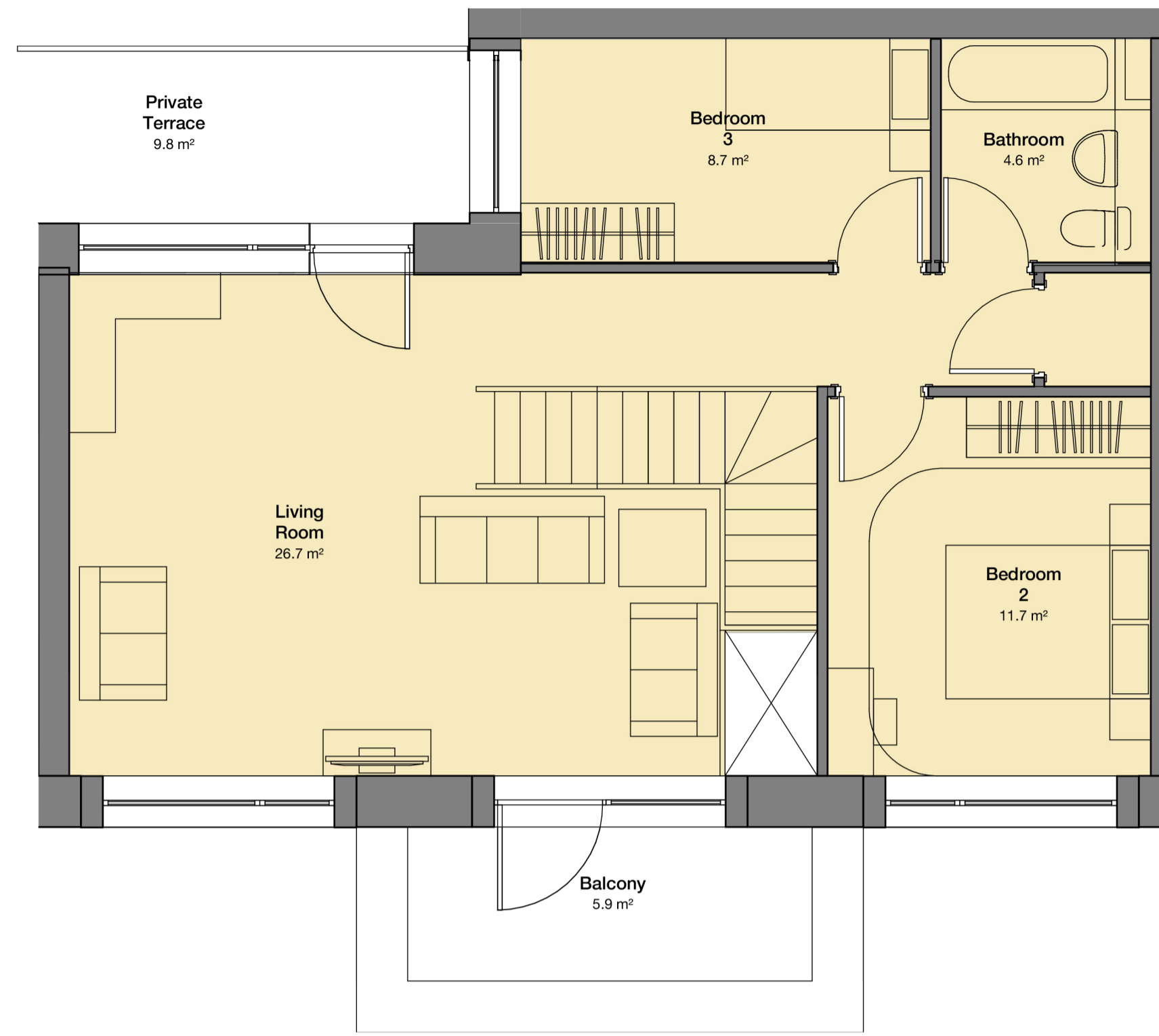


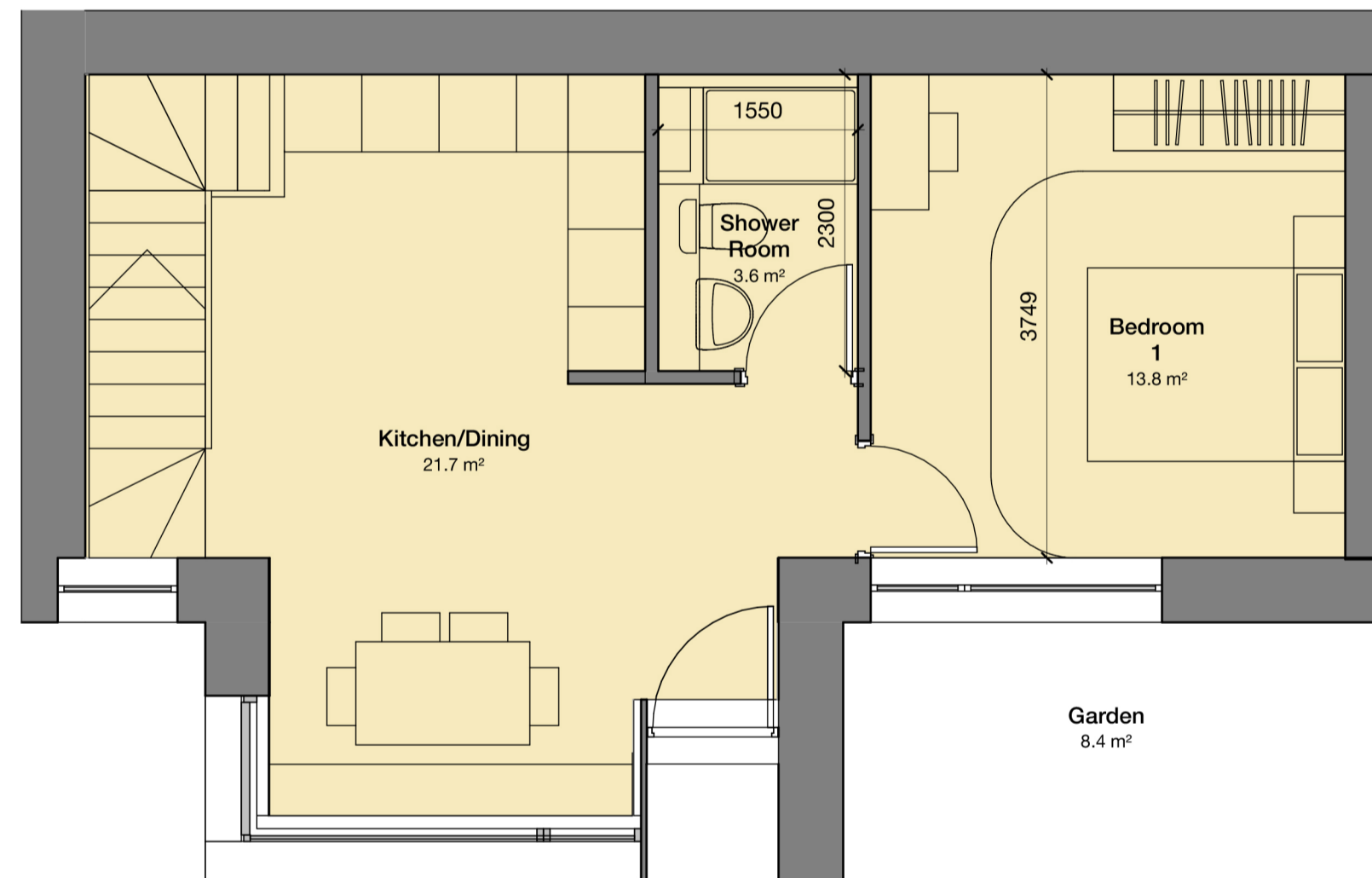
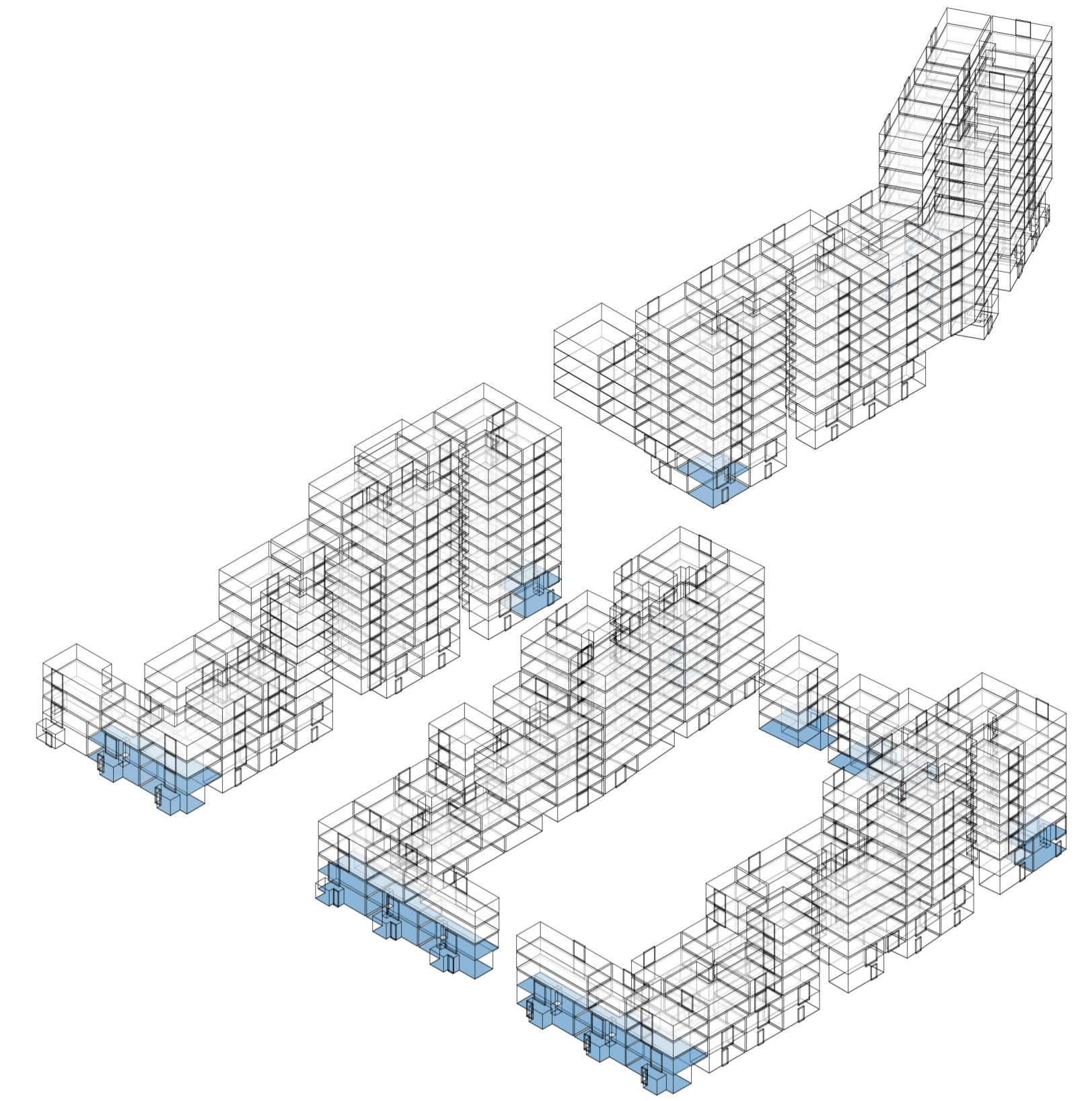
3 Bed 5 Person Duplex_3 - First Floor

1 : 50



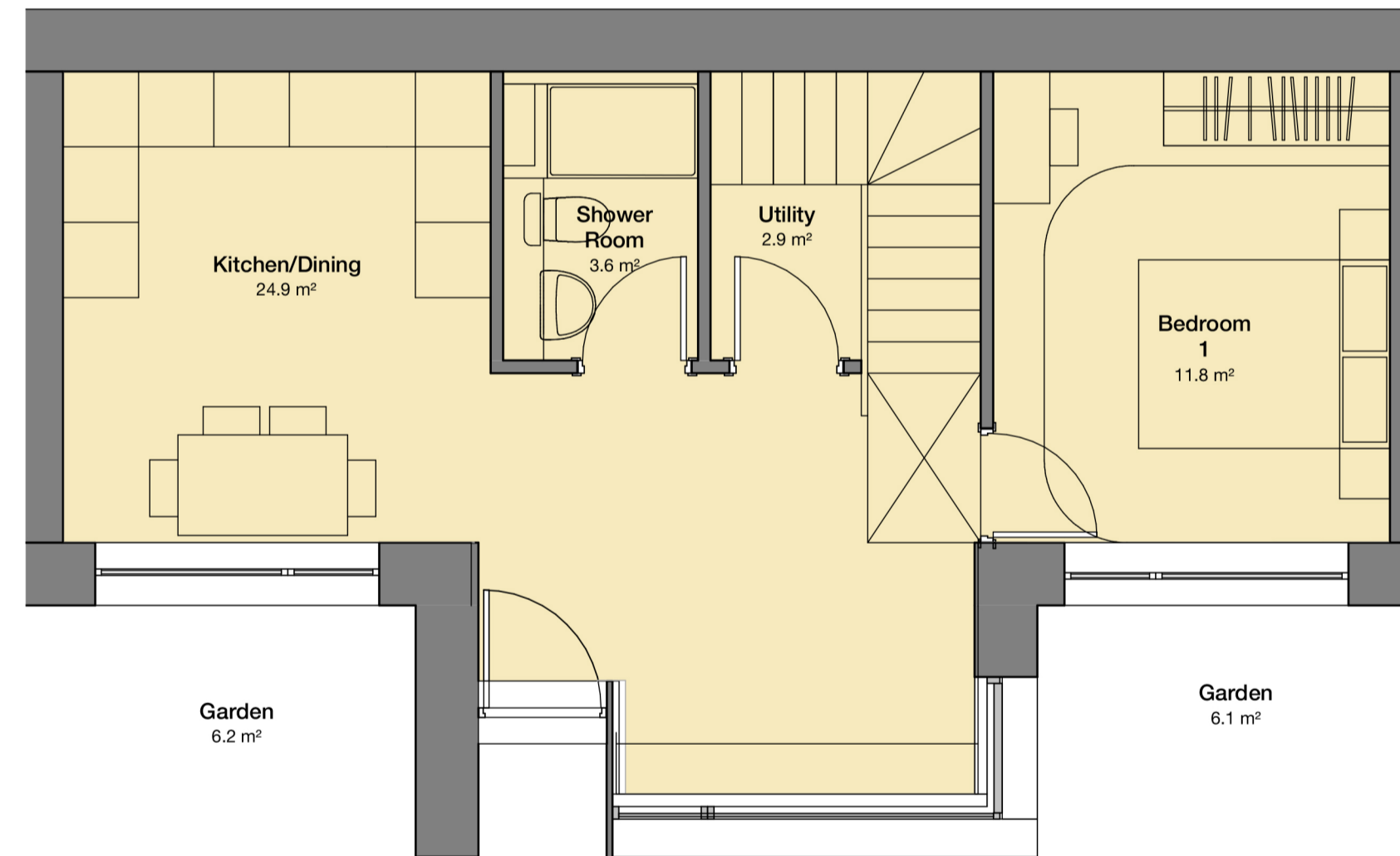
3 Bed 5 Person Duplex_4 - First Floor

1 : 50



3 Bed 5 Person Duplex_3 - Ground Floor

1 : 50



3 Bed 5 Person Duplex_4 - Ground Floor

1 : 50

3 Bed 5_D3 Duplex	Former Nestle Factory	SPG/Part M (req)	Compliance
Living/Kitchen/Dining	40.2 sqm 3.4m	27 sqm 2.8m	✓
Bedroom 1	13.8 sqm 3.7m	11.5 sqm 2.75m	✓
Bedroom 2	17.7 sqm 3.7m	11.5 sqm 2.55m	✓
Bedroom 3	11.2 sqm 3.3m	7.5 sqm 2.15m	✓
Bathroom	4.5 sqm	M4(2)	✓
Shower Room	3.6 sqm	M4(2)	✓
Storage/Utility	3.4 sqm	2.5 sqm	✓
Overall Area	119.6 sqm	93 sqm	✓
External Amenity	14.3 sqm 1.5m	8 sqm 1.5m	✓

All room dimensions are approximate. Final dimensions subject to technical design.

3 Bed 5_D4 Duplex	Former Nestle Factory	SPG/Part M (req)	Compliance
Living/Kitchen/Dining	51.6 sqm 3.4m	27 sqm 2.8m	✓
Bedroom 1	11.8 sqm 3.2m	11.5 sqm 2.75m	✓
Bedroom 2	11.7 sqm 3.2m	11.5 sqm 2.55m	✓
Bedroom 3	8.7 sqm 2.2m	7.5 sqm 2.15m	✓
Bathroom	4.7 sqm	M4(2)	✓
Shower Room	3.6 sqm	M4(2)	✓
Storage/Utility	2.9 sqm	2.5 sqm	✓
Overall Area	112.0 sqm	93 sqm	✓
External Amenity	15.7 sqm 1.5m	8 sqm 1.5m	✓

All room dimensions are approximate. Final dimensions subject to technical design.

