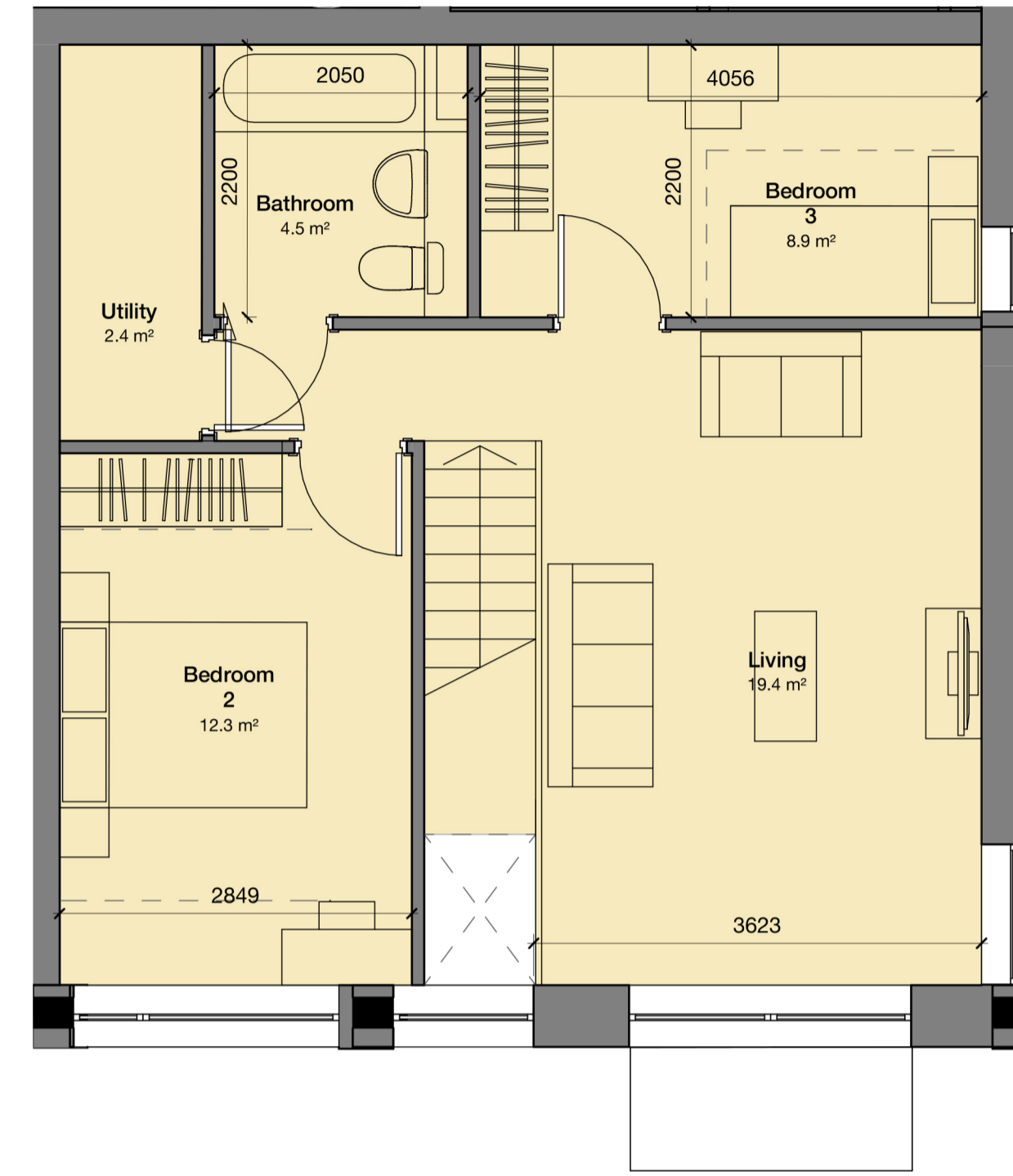
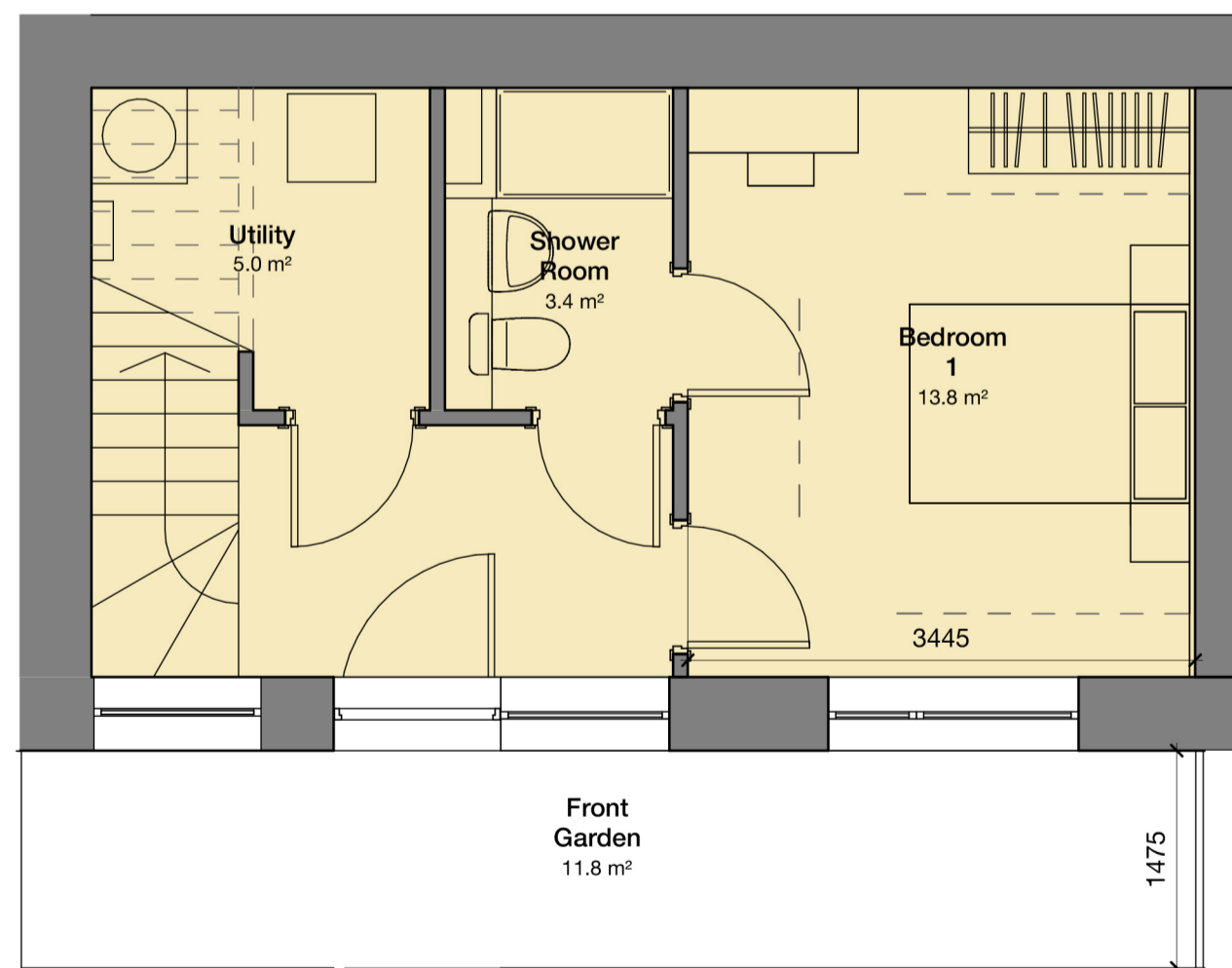
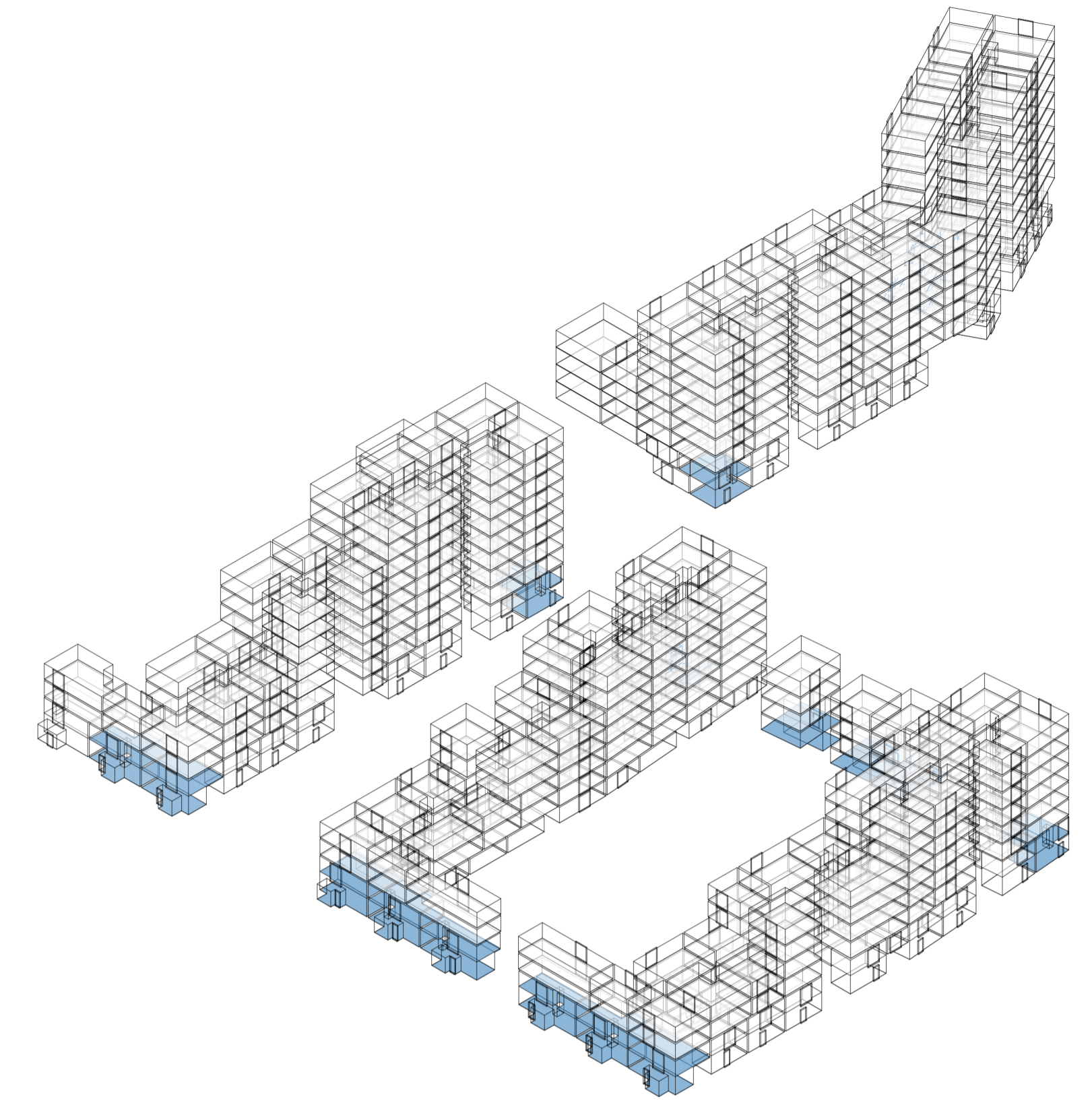


3 Bed 5 Person Duplex_1 - First Floor
1 : 50



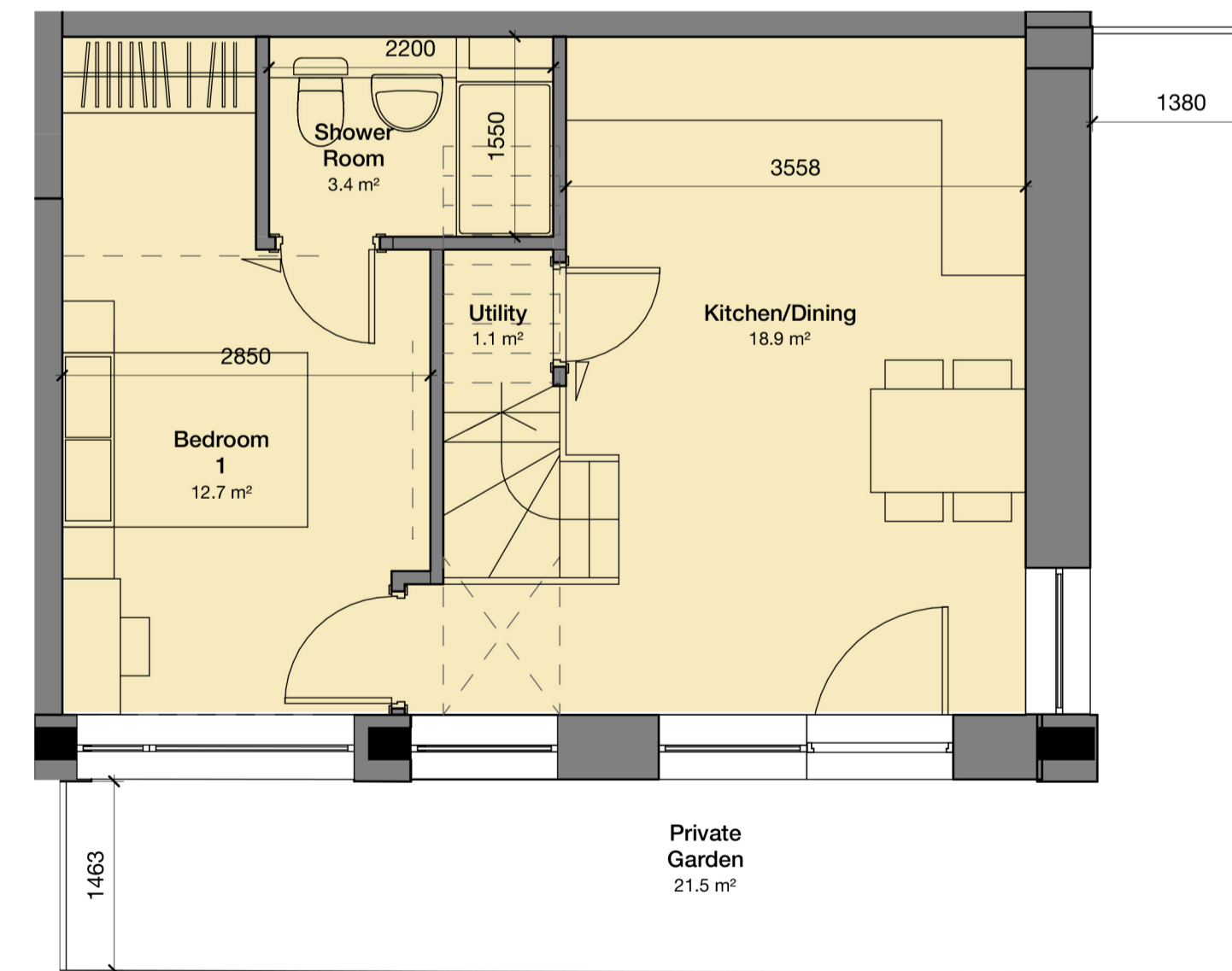
3 Bed 5 Person Duplex_2 - 1st Floor
1 : 50



3 Bed 5 Person Duplex_1 - Ground Floor
1 : 50

3 Bed 5_D1 Duplex	Former Nestle Factory		SPG/Part M (req)		Compliance
Living/Kitchen/Dining	33.7 sqm	4.1m	27 sqm	2.8m	✓
Bedroom 1	13.8 sqm	3.4m	11.5 sqm	2.75m	✓
Bedroom 2	11.7 sqm	3.3m	11.5 sqm	2.55m	✓
Bedroom 3	10.6 sqm	3.3m	7.5 sqm	2.15m	✓
Bathroom	4.5 sqm		M4(2)		✓
Shower Room	3.4 sqm		M4(2)		✓
Storage/Utility	5.0 sqm		2.5 sqm		✓
Overall Area	99.2 sqm		93 sqm		✓
External Amenity	29.9 sqm	1.7m	8 sqm	1.5m	✓

All room dimensions are approximate. Final dimensions to subject to technical design.



3 Bed 5 Person Duplex_2 - Ground Floor
1 : 50

3 Bed 5_D2 Duplex	Former Nestle Factory		SPG/Part M (req)		Compliance
Living/Kitchen/Dining	38.3 sqm	3.6m	29 sqm	2.8m	✓
Bedroom 1	12.7 sqm	2.9m	11.5 sqm	2.75m	✓
Bedroom 2	12.3 sqm	2.8m	11.5 sqm	2.55m	✓
Bedroom 3	8.9 sqm	2.2m	7.5 sqm	2.15m	✓
Bathroom	4.5sqm		M4(2)		✓
Shower Room	3.4 sqm		M4(2)		✓
Storage/Utility	3.5 sqm		2.5 sqm		✓
Overall Area	95.4 sqm		93 sqm		✓
External Amenity	21.5 sqm	1.5m	8 sqm	1.5m	✓

All room dimensions are approximate. Final dimensions to subject to technical design.

