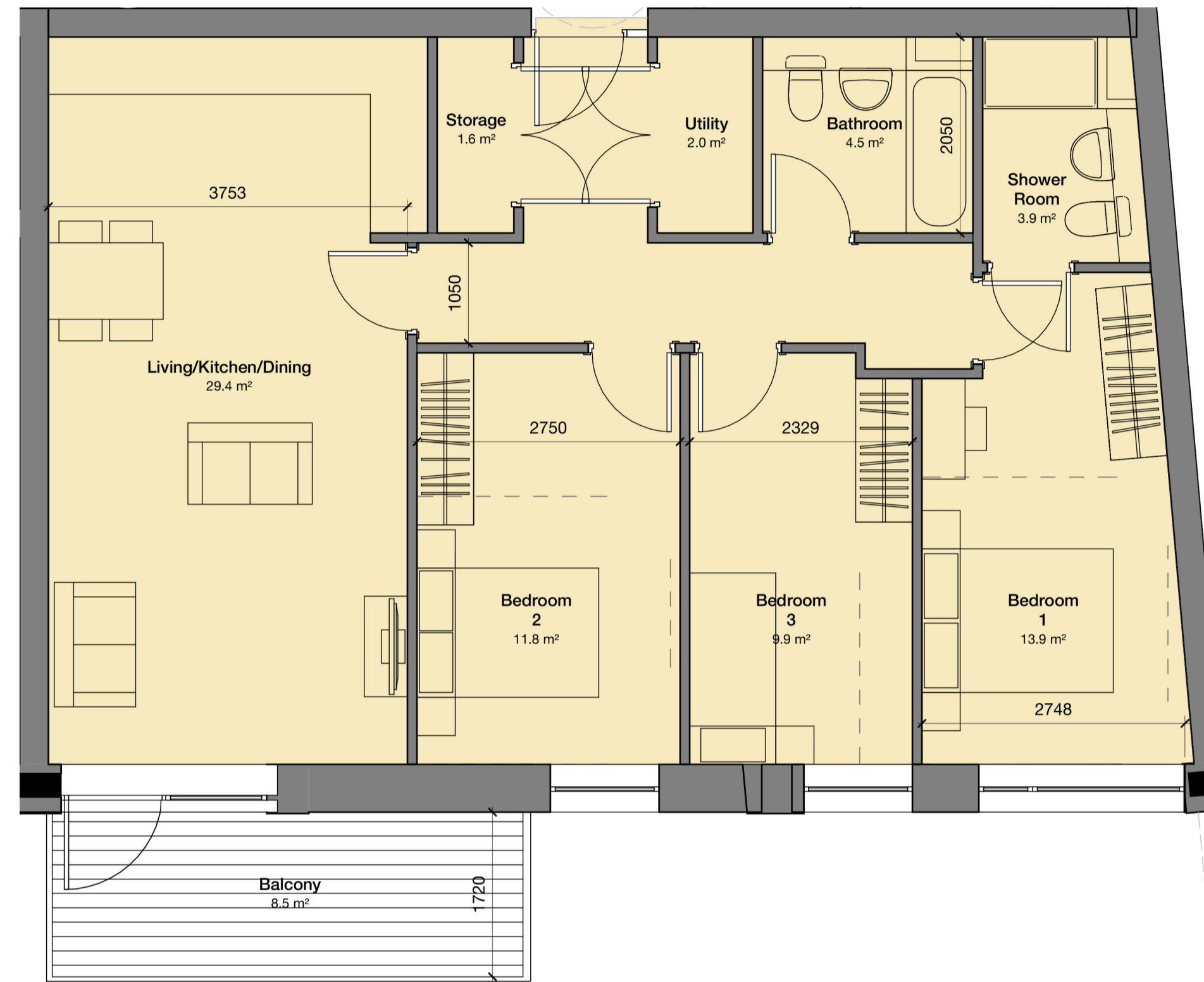


3 Bed 4 Person_1	Former Nestle Factory		SPG/Part M (req)		Compliance
Living/Kitchen/Dining	29 sqm	4.6m	27 sqm	2.8m	✓
Bedroom 1	14.3 sqm	3.0m	11.5 sqm	2.75m	✓
Bedroom 2	8.2 sqm	2.15m	7.5 sqm	2.15m	✓
Bedroom 3	8.4 sqm	2.2m	7.5 sqm	2.15m	✓
Bathroom	4.5 sqm		M4(2)		✓
Shower Room	3.4 sqm		M4(2)		✓
Storage/Utility	2.5 sqm		2.5 sqm		✓
Overall Area	81.8 sqm		74 sqm		✓
External Amenity	8.5 sqm	1.7m	8 sqm	1.5m	✓

All room dimensions are approximate. Final dimensions to subject to technical design.

**3 Bed 4 Person Flat\_1**  
1 : 50



3 Bed 5 Person_1	Former Nestle Factory		SPG/Part M (req)		Compliance
Living/Kitchen/Dining	29.4 sqm	3.8m	29 sqm	2.8m	✓
Bedroom 1	13.9 sqm	2.75m	11.5 sqm	2.75m	✓
Bedroom 2	11.8 sqm	2.75m	11.5 sqm	2.15m	✓
Bedroom 3	9.9 sqm	2.3m	7.5 sqm	2.15m	✓
Bathroom	4.5 sqm		M4(2)		✓
Shower Room	3.9 sqm		M4(2)		✓
Storage/Utility	3.6 sqm		2.5 sqm		✓
Overall Area	88.9 sqm		86 sqm		✓
External Amenity	8.5 sqm	1.7m	8 sqm	1.5m	✓

All room dimensions are approximate. Final dimensions to subject to technical design.

**3 Bed 5 Person Flat\_1**  
1 : 50

