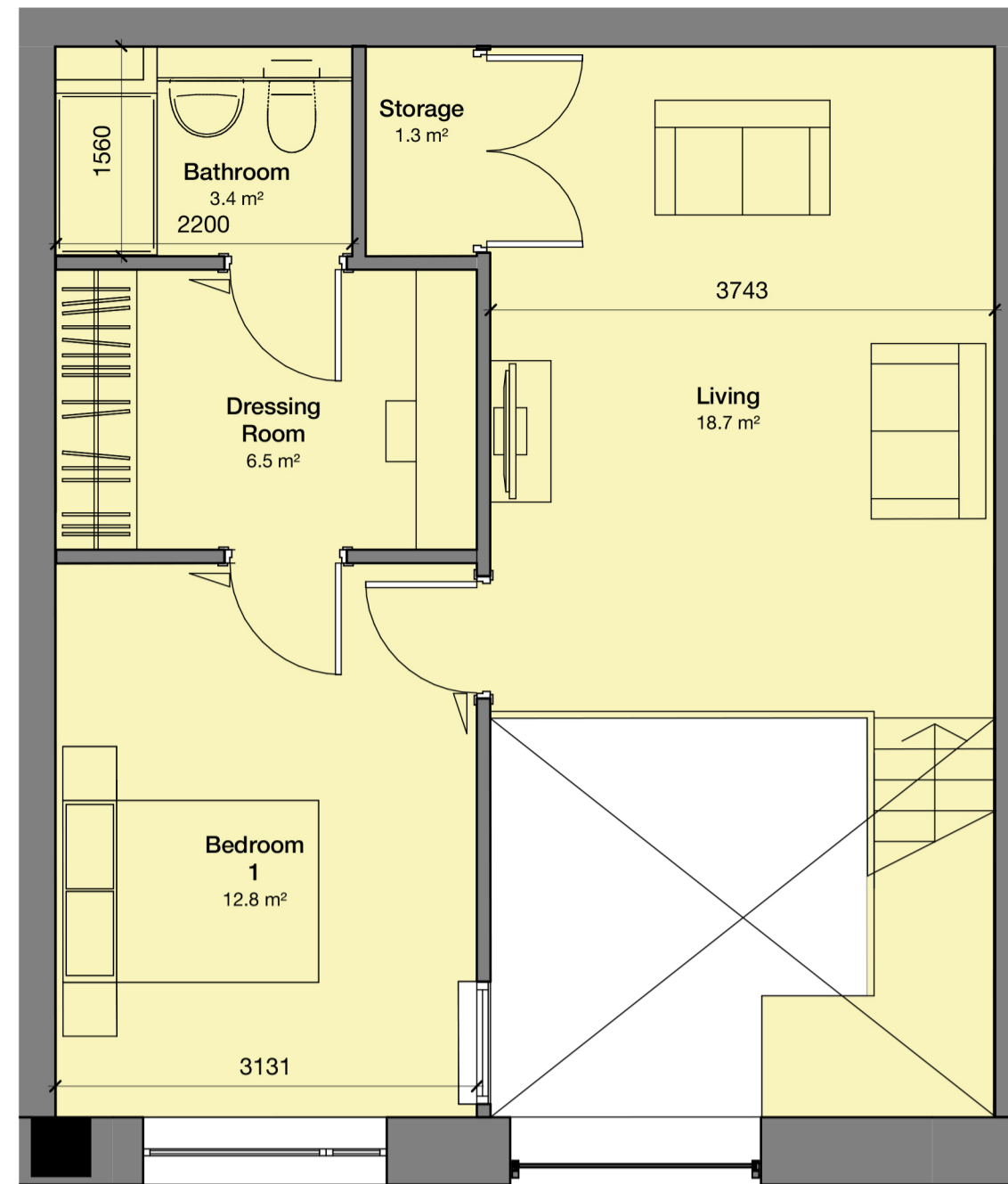
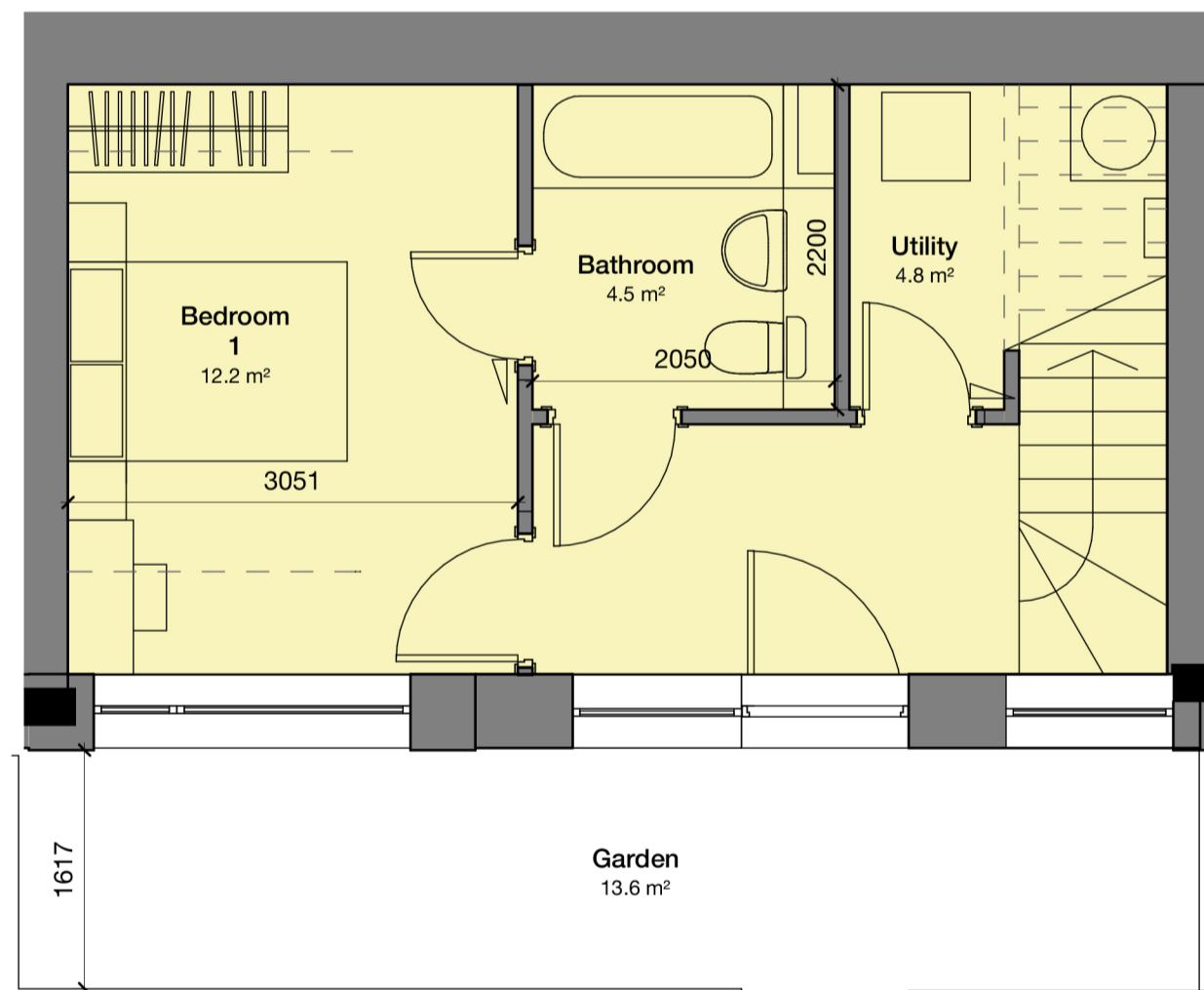
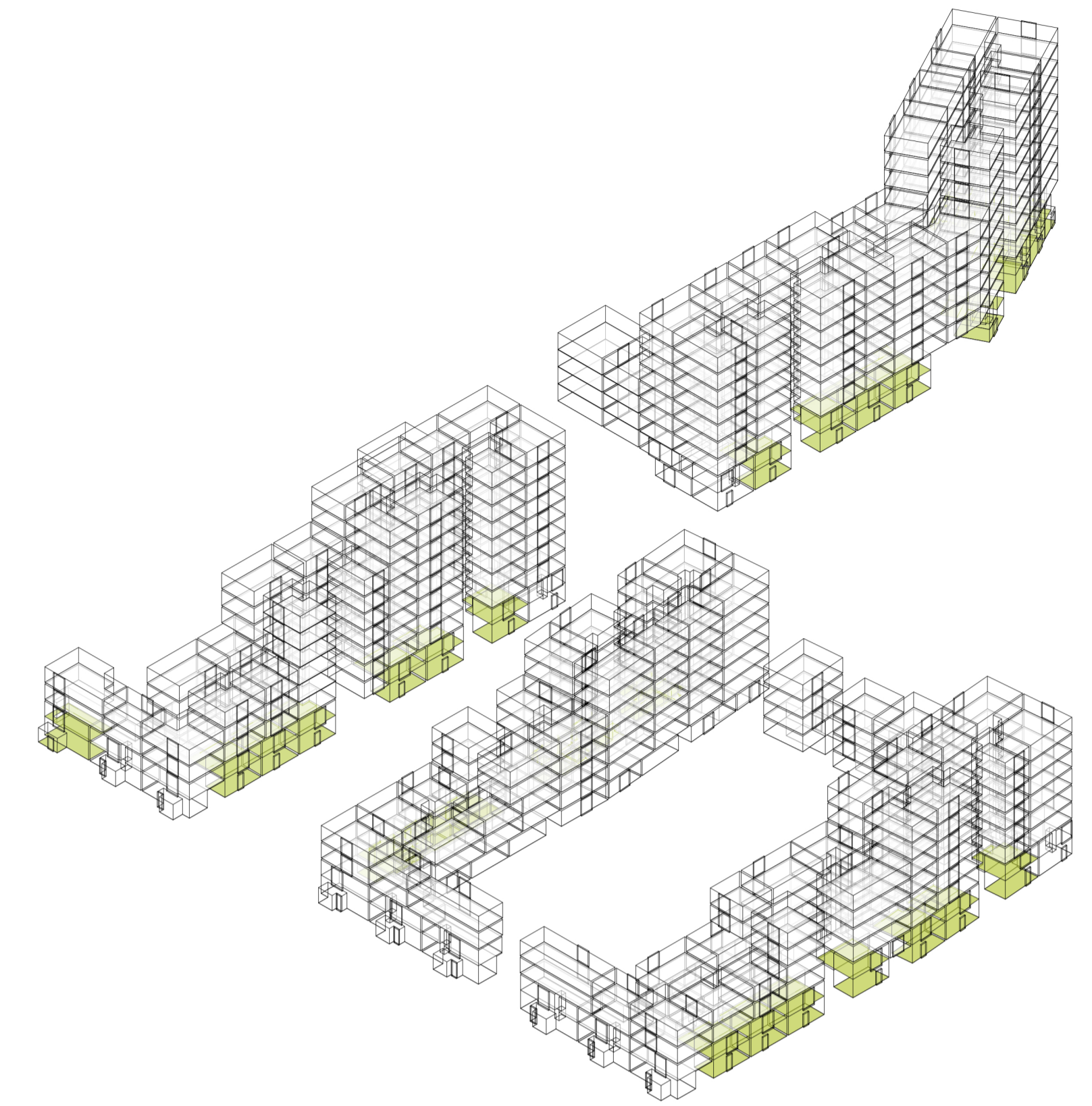


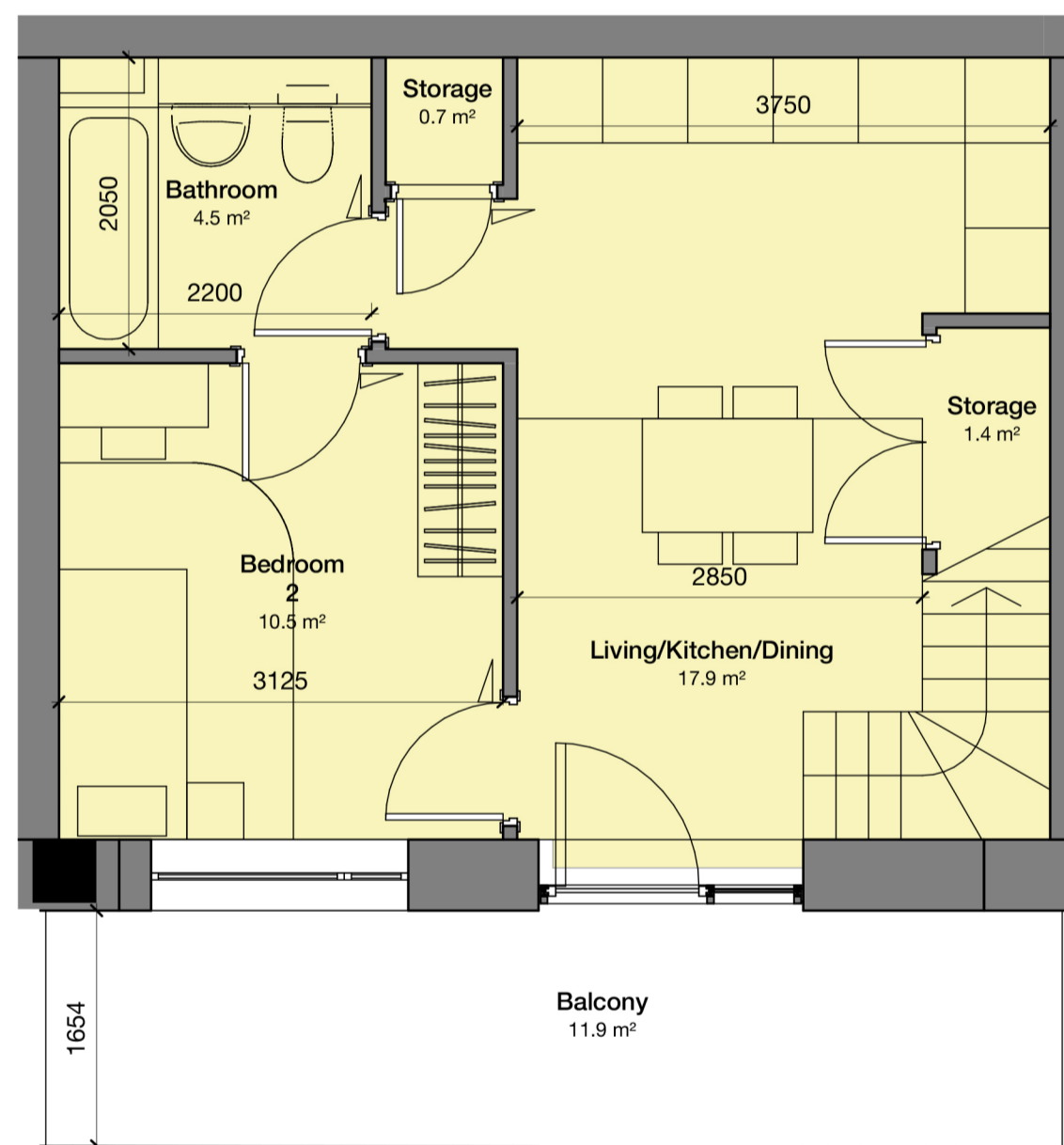
**2 Bed 4 Person Duplex\_1 - 1st Floor**  
1 : 50



**2 Bed 3 Person Duplex\_1 - 1st Floor**  
1 : 50



**2 Bed 4 Person Duplex\_1 - Ground Floor**  
1 : 50



**2 Bed 3 Person Duplex\_1 - Ground Floor**  
1 : 50

2 Bed 4 Person_D1 Duplex	Former Nestle Factory		SPG/Part M (req)		Compliance
Living/Kitchen/Dining	29.7 sqm	3.3m	25 sqm	2.8m	✓
Bedroom 1	12.2 sqm	3.1m	11.5 sqm	2.75m	✓
Bedroom 2	15.6 sqm	3.0m	11.5 sqm	2.75m	✓
Bathroom	4.5 sqm		M4(2)		✓
Shower Room	3.4 sqm		M4(2)		✓
Storage/Utility	4.8 sqm		2 sqm		✓
Overall Area	87.2 sqm		79 sqm		✓
External Amenity	13.6 sqm	1.6m	7sqm	1.5m	✓

All room dimensions are approximate. Final dimensions to subject to technical design.

2 Bed 3 Person_D1 Duplex	Former Nestle Factory		SPG/Part M (req)		Compliance
Living/Kitchen/Dining	36.6 sqm	3.7m	27 sqm	2.8m	✓
Bedroom 1	12.8 sqm	3.1m	11.5 sqm	2.75m	✓
Bedroom 2	10.5 sqm	3.1m	7.5 sqm	2.15m	✓
Bathroom	4.5 sqm		M4(2)		✓
Shower Room	3.4 sqm		M4(2)		✓
Storage/Utility	3.4 sqm		2 sqm		✓
Overall Area	86.7 sqm		70 sqm		✓
External Amenity	11.9 sqm	1.7m	6sqm	1.5m	✓

All room dimensions are approximate. Final dimensions to subject to technical design.

