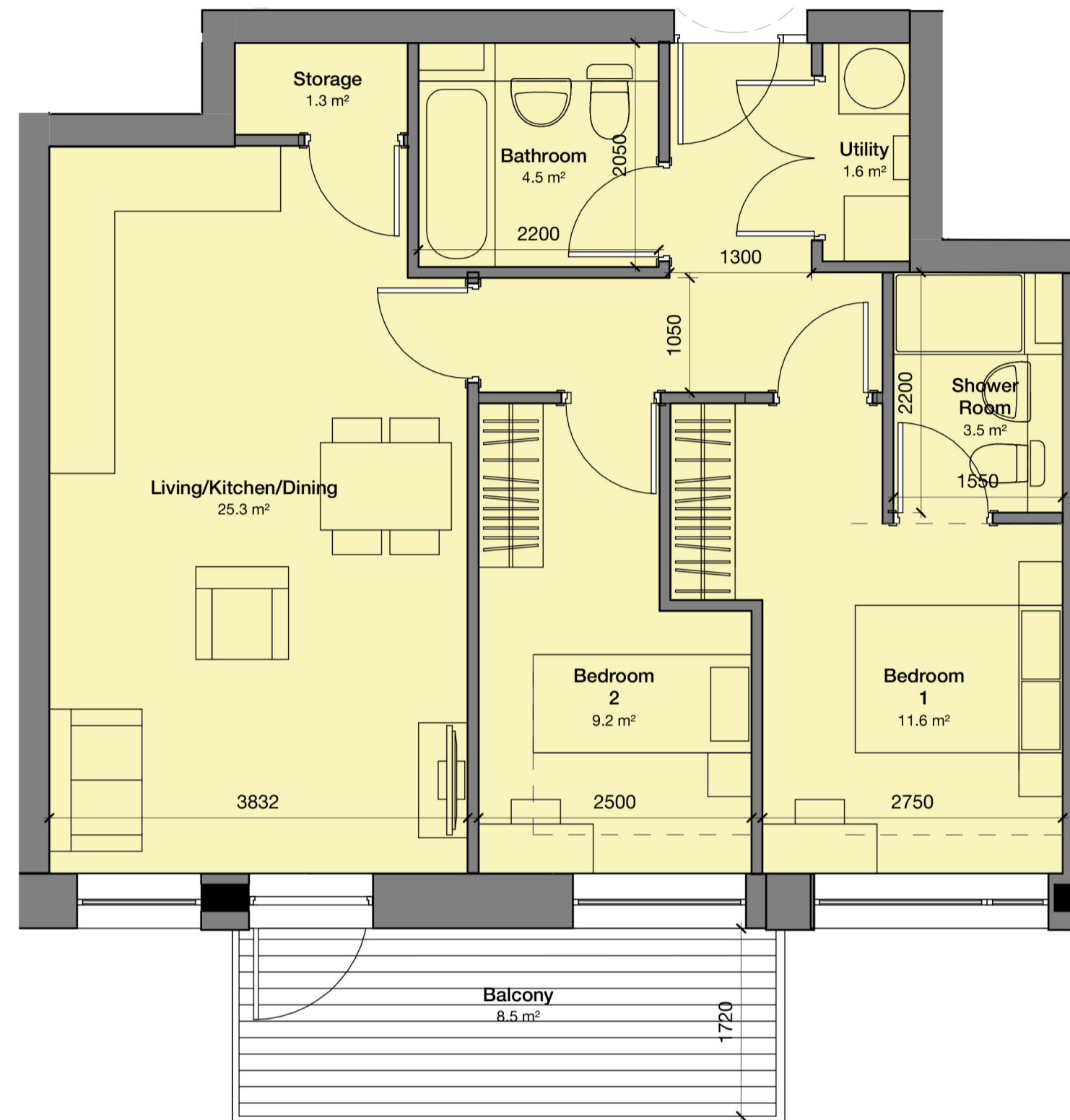


2 Bed 3 Person_1	Former Nestle Factory		SPG/Part M (req)		Compliance
Living/Kitchen/Dining	25.9 sqm	3.7m	25 sqm	2.8m	✓
Bedroom 1	12.7 sqm	3.4m	11.5 sqm	2.75m	✓
Bedroom 2	9.3 sqm	2.9m	7.5 sqm	2.15m	✓
Bathroom	4.5 sqm		M4(2)		✓
Shower Room	3.4 sqm		M4(2)		✓
Storage/Utility	2.2 sqm		2 sqm		✓
Overall Area	68.9sqm		61 sqm		✓
External Amenity	8.5 sqm	1.7m	6sqm	1.5m	✓

All room dimensions are approximate. Final dimensions to subject to technical design.

2 Bed 3 Person Flat_1
1 : 50



2 Bed 3 Person_2	Former Nestle Factory		SPG/Part M (req)		Compliance
Living/Kitchen/Dining	25.3 sqm	3.8m	25 sqm	2.8m	✓
Bedroom 1	11.6 sqm	2.75m	11.5 sqm	2.75m	✓
Bedroom 2	9.2 sqm	2.5m	7.5 sqm	2.15m	✓
Bathroom	4.5 sqm		M4(2)		✓
Shower Room	3.5 sqm		M4(2)		✓
Storage/Utility	2.9 sqm		2 sqm		✓
Overall Area	66.5 sqm		61 sqm		✓
External Amenity	8.5 sqm	1.7m	6sqm	1.5m	✓

All room dimensions are approximate. Final dimensions to subject to technical design.

2 Bed 3 Person Flat_2
1 : 50

