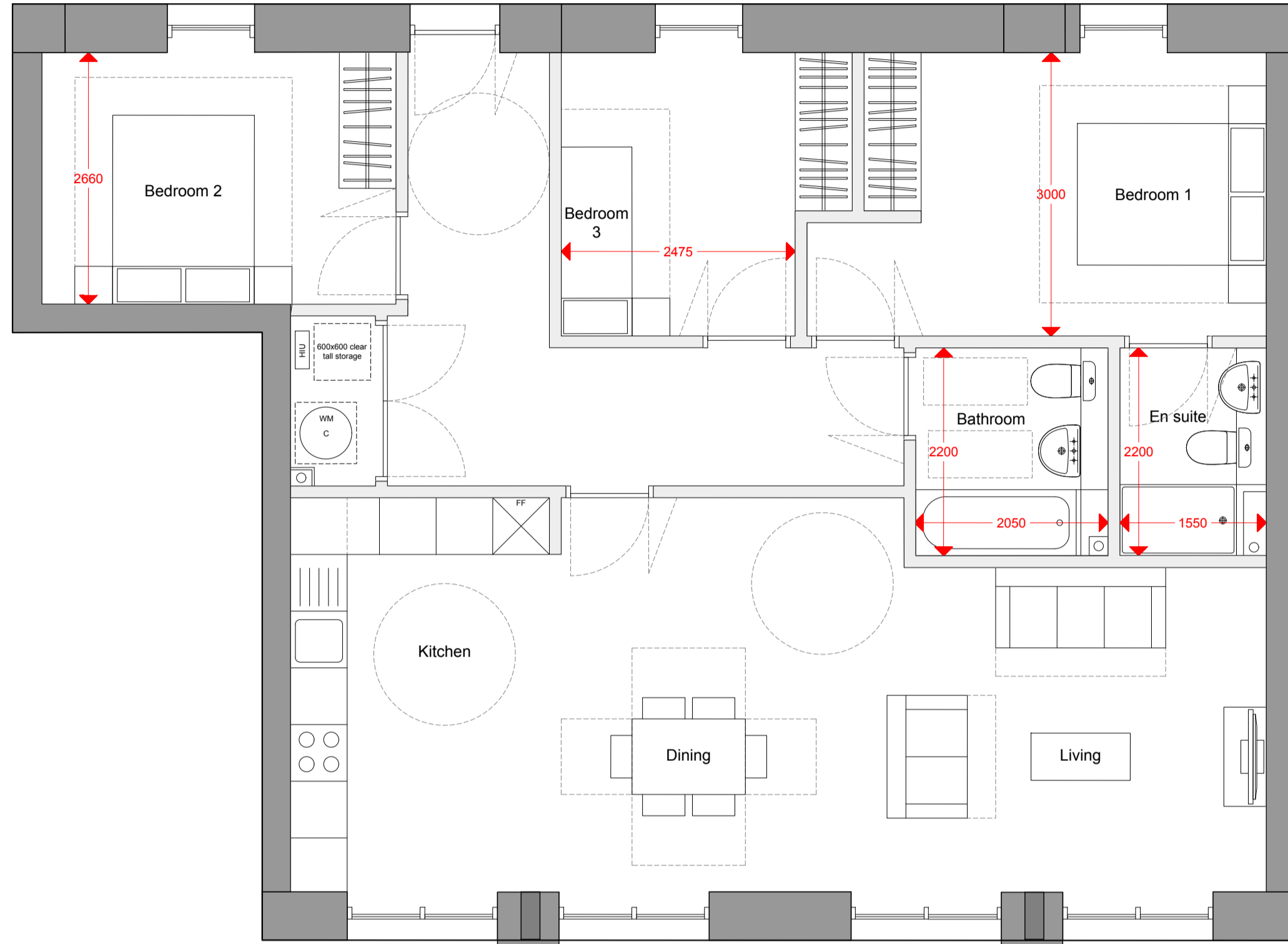


Flat - 3bed 5person	LHDG Requirements	Compliant	Former Nestlé Factory
Combined kitchen/living/dining	As per Appendix D	✓	See Plan
Double room 1 (principal)	11.50 m ² w=2.75 m	✓	13.50 m ² w=3.00 m
Double room 2 (second)	11.50 m ² w=2.55 m	✓	11.50 m ² w=2.66 m
Single room	7.50 m ² w=2.15 m	✓	8.50 m ² w=2.48 m
Bathroom	As per Diagram 2.5	✓	See Plan
WC with shower	As per Diagram 2.5	✓	See Plan
Storage	2.5 m ²	✓	2.50
Minimum Area Required (m²)	86	✓	100.30
Minimum Outdoor amenity space (m²)	7	✓	Internalised Balcony

TYPE K

Block F1
100.30 sqm

F1-120



DATE	REV.	DESCRIPTION	CHK.
11.07.19	01	ISSUE FOR CONSTRUCTION	AM
11.07.19	02	ISSUE FOR CONSTRUCTION	AM
11.07.19	03	ISSUE FOR CONSTRUCTION	AM
11.07.19	04	ISSUE FOR CONSTRUCTION	AM
11.07.19	05	ISSUE FOR CONSTRUCTION	AM
11.07.19	06	ISSUE FOR CONSTRUCTION	AM
11.07.19	07	ISSUE FOR CONSTRUCTION	AM
11.07.19	08	ISSUE FOR CONSTRUCTION	AM
11.07.19	09	ISSUE FOR CONSTRUCTION	AM
11.07.19	10	ISSUE FOR CONSTRUCTION	AM
11.07.19	11	ISSUE FOR CONSTRUCTION	AM
11.07.19	12	ISSUE FOR CONSTRUCTION	AM
11.07.19	13	ISSUE FOR CONSTRUCTION	AM
11.07.19	14	ISSUE FOR CONSTRUCTION	AM
11.07.19	15	ISSUE FOR CONSTRUCTION	AM
11.07.19	16	ISSUE FOR CONSTRUCTION	AM
11.07.19	17	ISSUE FOR CONSTRUCTION	AM
11.07.19	18	ISSUE FOR CONSTRUCTION	AM
11.07.19	19	ISSUE FOR CONSTRUCTION	AM
11.07.19	20	ISSUE FOR CONSTRUCTION	AM
11.07.19	21	ISSUE FOR CONSTRUCTION	AM
11.07.19	22	ISSUE FOR CONSTRUCTION	AM
11.07.19	23	ISSUE FOR CONSTRUCTION	AM
11.07.19	24	ISSUE FOR CONSTRUCTION	AM
11.07.19	25	ISSUE FOR CONSTRUCTION	AM
11.07.19	26	ISSUE FOR CONSTRUCTION	AM
11.07.19	27	ISSUE FOR CONSTRUCTION	AM
11.07.19	28	ISSUE FOR CONSTRUCTION	AM
11.07.19	29	ISSUE FOR CONSTRUCTION	AM
11.07.19	30	ISSUE FOR CONSTRUCTION	AM
11.07.19	31	ISSUE FOR CONSTRUCTION	AM
11.07.19	32	ISSUE FOR CONSTRUCTION	AM
11.07.19	33	ISSUE FOR CONSTRUCTION	AM
11.07.19	34	ISSUE FOR CONSTRUCTION	AM
11.07.19	35	ISSUE FOR CONSTRUCTION	AM
11.07.19	36	ISSUE FOR CONSTRUCTION	AM
11.07.19	37	ISSUE FOR CONSTRUCTION	AM
11.07.19	38	ISSUE FOR CONSTRUCTION	AM
11.07.19	39	ISSUE FOR CONSTRUCTION	AM
11.07.19	40	ISSUE FOR CONSTRUCTION	AM
11.07.19	41	ISSUE FOR CONSTRUCTION	AM
11.07.19	42	ISSUE FOR CONSTRUCTION	AM
11.07.19	43	ISSUE FOR CONSTRUCTION	AM
11.07.19	44	ISSUE FOR CONSTRUCTION	AM
11.07.19	45	ISSUE FOR CONSTRUCTION	AM
11.07.19	46	ISSUE FOR CONSTRUCTION	AM
11.07.19	47	ISSUE FOR CONSTRUCTION	AM
11.07.19	48	ISSUE FOR CONSTRUCTION	AM
11.07.19	49	ISSUE FOR CONSTRUCTION	AM
11.07.19	50	ISSUE FOR CONSTRUCTION	AM
11.07.19	51	ISSUE FOR CONSTRUCTION	AM
11.07.19	52	ISSUE FOR CONSTRUCTION	AM
11.07.19	53	ISSUE FOR CONSTRUCTION	AM
11.07.19	54	ISSUE FOR CONSTRUCTION	AM
11.07.19	55	ISSUE FOR CONSTRUCTION	AM
11.07.19	56	ISSUE FOR CONSTRUCTION	AM
11.07.19	57	ISSUE FOR CONSTRUCTION	AM
11.07.19	58	ISSUE FOR CONSTRUCTION	AM
11.07.19	59	ISSUE FOR CONSTRUCTION	AM
11.07.19	60	ISSUE FOR CONSTRUCTION	AM
11.07.19	61	ISSUE FOR CONSTRUCTION	AM
11.07.19	62	ISSUE FOR CONSTRUCTION	AM
11.07.19	63	ISSUE FOR CONSTRUCTION	AM
11.07.19	64	ISSUE FOR CONSTRUCTION	AM
11.07.19	65	ISSUE FOR CONSTRUCTION	AM
11.07.19	66	ISSUE FOR CONSTRUCTION	AM
11.07.19	67	ISSUE FOR CONSTRUCTION	AM
11.07.19	68	ISSUE FOR CONSTRUCTION	AM
11.07.19	69	ISSUE FOR CONSTRUCTION	AM
11.07.19	70	ISSUE FOR CONSTRUCTION	AM
11.07.19	71	ISSUE FOR CONSTRUCTION	AM
11.07.19	72	ISSUE FOR CONSTRUCTION	AM
11.07.19	73	ISSUE FOR CONSTRUCTION	AM
11.07.19	74	ISSUE FOR CONSTRUCTION	AM
11.07.19	75	ISSUE FOR CONSTRUCTION	AM
11.07.19	76	ISSUE FOR CONSTRUCTION	AM
11.07.19	77	ISSUE FOR CONSTRUCTION	AM
11.07.19	78	ISSUE FOR CONSTRUCTION	AM
11.07.19	79	ISSUE FOR CONSTRUCTION	AM
11.07.19	80	ISSUE FOR CONSTRUCTION	AM
11.07.19	81	ISSUE FOR CONSTRUCTION	AM
11.07.19	82	ISSUE FOR CONSTRUCTION	AM
11.07.19	83	ISSUE FOR CONSTRUCTION	AM
11.07.19	84	ISSUE FOR CONSTRUCTION	AM
11.07.19	85	ISSUE FOR CONSTRUCTION	AM
11.07.19	86	ISSUE FOR CONSTRUCTION	AM
11.07.19	87	ISSUE FOR CONSTRUCTION	AM
11.07.19	88	ISSUE FOR CONSTRUCTION	AM
11.07.19	89	ISSUE FOR CONSTRUCTION	AM
11.07.19	90	ISSUE FOR CONSTRUCTION	AM
11.07.19	91	ISSUE FOR CONSTRUCTION	AM
11.07.19	92	ISSUE FOR CONSTRUCTION	AM
11.07.19	93	ISSUE FOR CONSTRUCTION	AM
11.07.19	94	ISSUE FOR CONSTRUCTION	AM
11.07.19	95	ISSUE FOR CONSTRUCTION	AM
11.07.19	96	ISSUE FOR CONSTRUCTION	AM
11.07.19	97	ISSUE FOR CONSTRUCTION	AM
11.07.19	98	ISSUE FOR CONSTRUCTION	AM
11.07.19	99	ISSUE FOR CONSTRUCTION	AM
11.07.19	100	ISSUE FOR CONSTRUCTION	AM