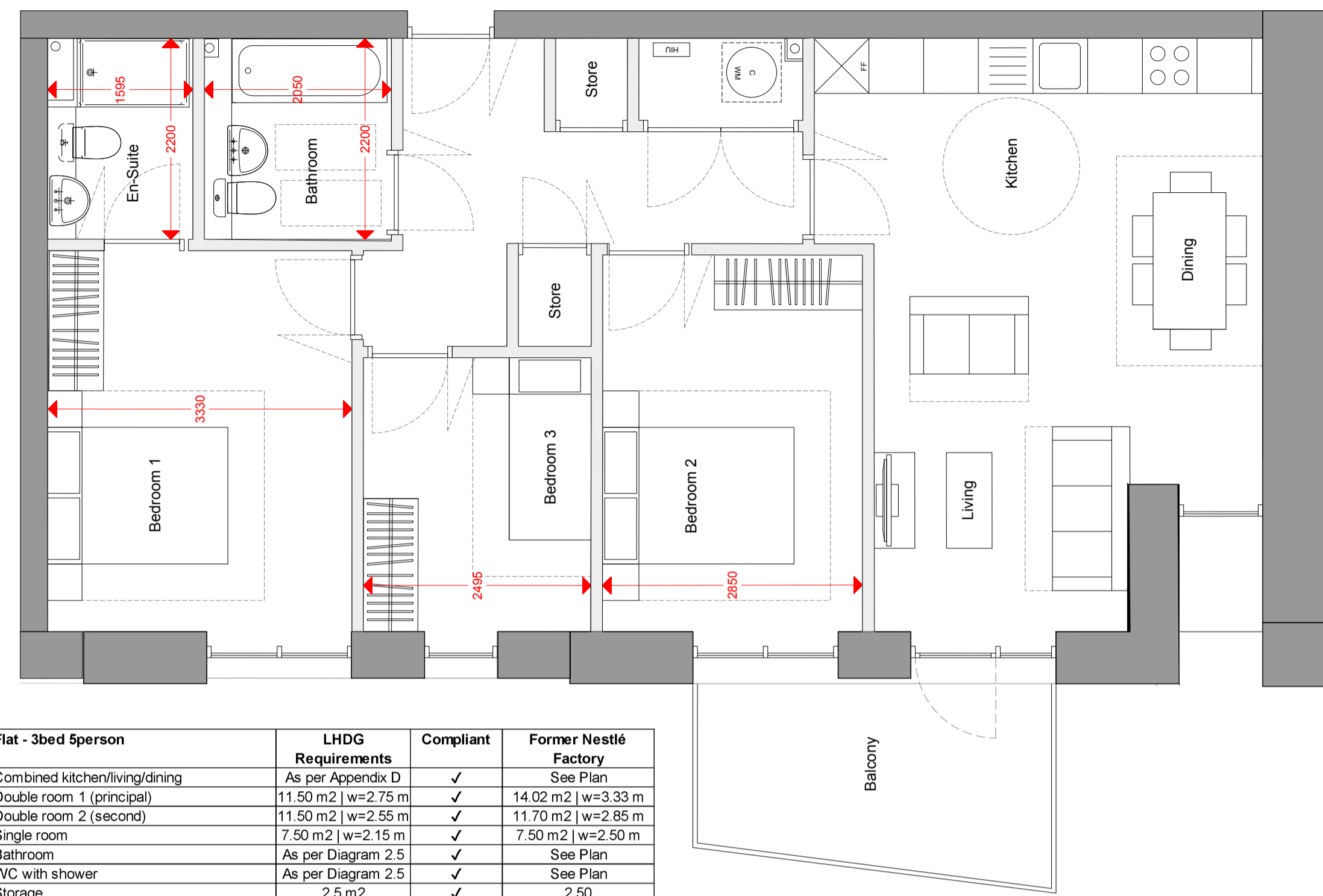


| Flat - 3bed 5persion                      | LHDG Requirements   | Compliant | Former Nestlé Factory |
|---|---------------------|-----------|-----------------------|
| Combined kitchen/living/dining            | As per Appendix D   | ✓         | See Plan              |
| Double room 1 (principal)                 | 11.50 m2   w=2.75 m | ✓         | 14.02 m2   w=3.33 m   |
| Double room 2 (second)                    | 11.50 m2   w=2.55 m | ✓         | 11.70 m2   w=2.85 m   |
| Single room                               | 7.50 m2   w=2.15 m  | ✓         | 7.50 m2   w=2.50 m    |
| Bathroom                                  | As per Diagram 2.5  | ✓         | See Plan              |
| WC with shower                            | As per Diagram 2.5  | ✓         | See Plan              |
| Storage                                   | 2.5 m2              | ✓         | 2.50                  |
| <b>Minimum Area Required (m2)</b>         | <b>86</b>           | ✓         | <b>87.10</b>          |
| <b>Minimum Outdoor amenity space (m2)</b> | <b>7</b>            | ✓         | <b>7.00</b>           |

### TYPE G

Block F3  
87.10 sqm

- F3-13
- F3-21
- F3-29
- F3-37

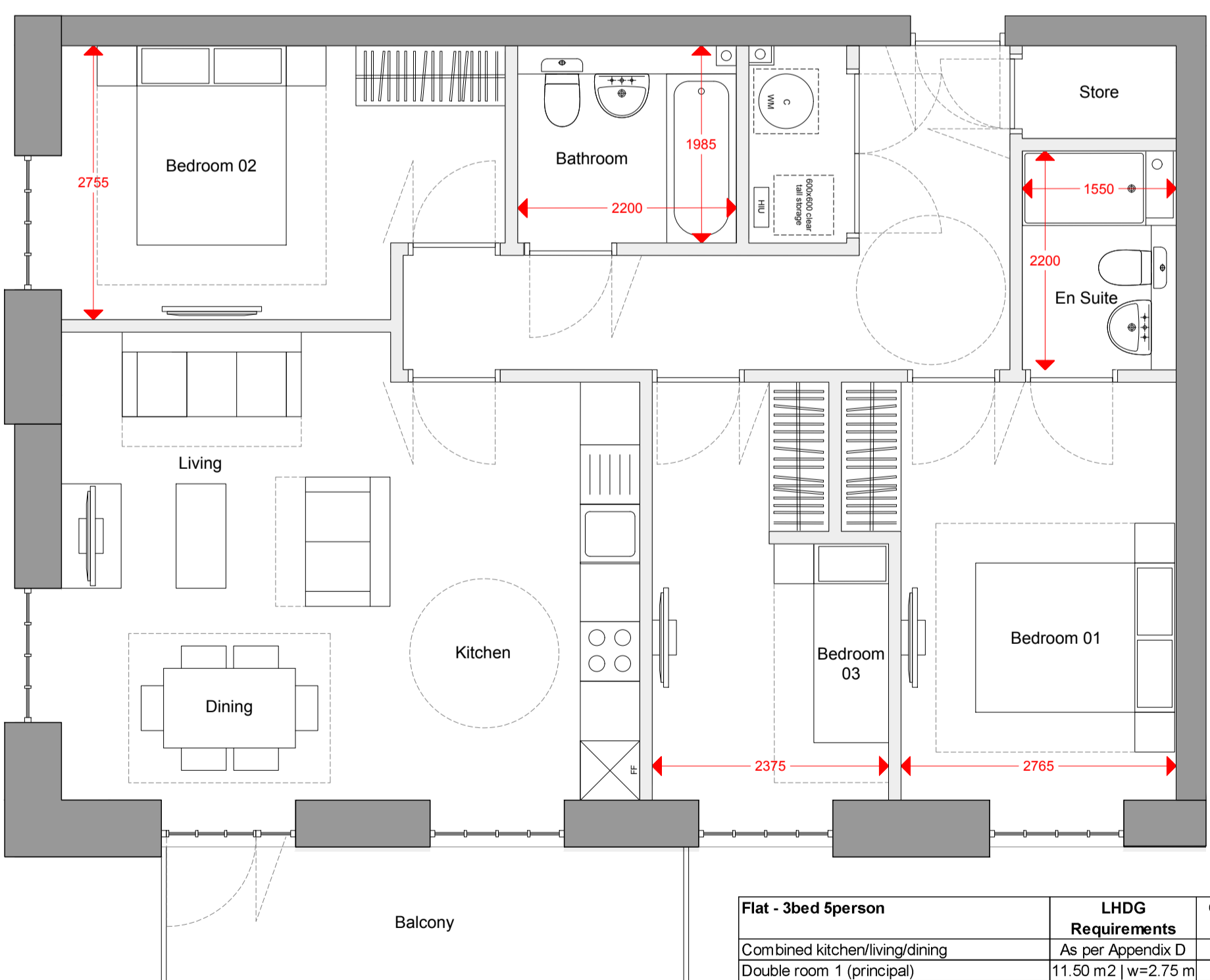


| Flat - 3bed 5persion                      | LHDG Requirements   | Compliant | Former Nestlé Factory |
|---|---------------------|-----------|-----------------------|
| Combined kitchen/living/dining            | As per Appendix D   | ✓         | See Plan              |
| Double room 1 (principal)                 | 11.50 m2   w=2.75 m | ✓         | 14.02 m2   w=3.33 m   |
| Double room 2 (second)                    | 11.50 m2   w=2.55 m | ✓         | 11.70 m2   w=2.85 m   |
| Single room                               | 7.50 m2   w=2.15 m  | ✓         | 7.50 m2   w=2.50 m    |
| Bathroom                                  | As per Diagram 2.5  | ✓         | See Plan              |
| WC with shower                            | As per Diagram 2.5  | ✓         | See Plan              |
| Storage                                   | 2.5 m2              | ✓         | 2.50                  |
| <b>Minimum Area Required (m2)</b>         | <b>86</b>           | ✓         | <b>86.00</b>          |
| <b>Minimum Outdoor amenity space (m2)</b> | <b>7</b>            | ✓         | <b>7.00</b>           |

### TYPE H

Block F3  
86.00 sqm

- F3-45
- F3-53
- F3-61
- F3-69
- F3-77
- F3-85



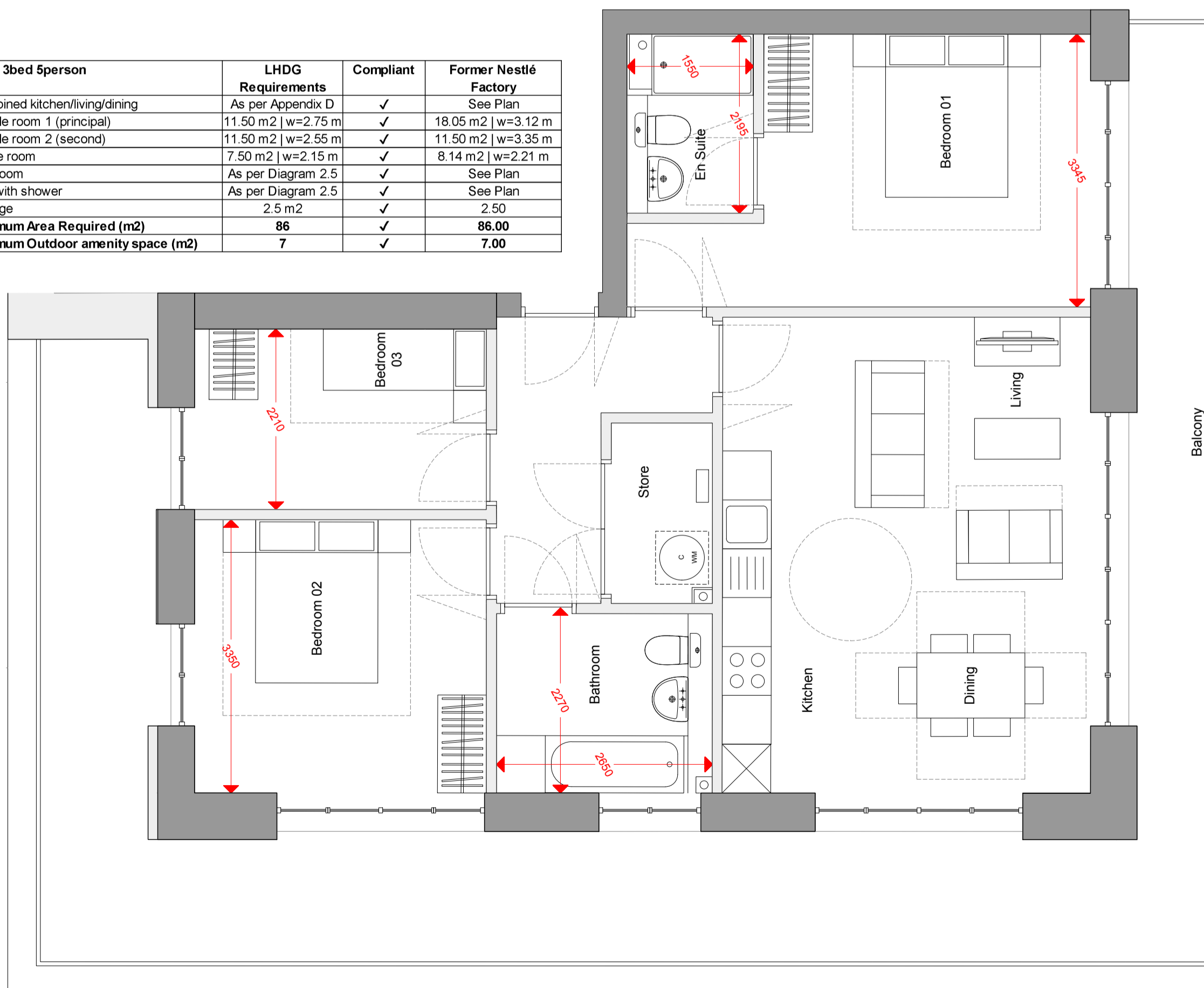
| Flat - 3bed 5persion                      | LHDG Requirements   | Compliant | Former Nestlé Factory |
|---|---------------------|-----------|-----------------------|
| Combined kitchen/living/dining            | As per Appendix D   | ✓         | See Plan              |
| Double room 1 (principal)                 | 11.50 m2   w=2.75 m | ✓         | 12.52 m2   w=2.77 m   |
| Double room 2 (second)                    | 11.50 m2   w=2.55 m | ✓         | 11.70 m2   w=2.55 m   |
| Single room                               | 7.50 m2   w=2.15 m  | ✓         | 8.94 m2   w=2.38 m    |
| Bathroom                                  | As per Diagram 2.5  | ✓         | See Plan              |
| WC with shower                            | As per Diagram 2.5  | ✓         | See Plan              |
| Storage                                   | 2.5 m2              | ✓         | 2.70                  |
| <b>Minimum Area Required (m2)</b>         | <b>86</b>           | ✓         | <b>86.40</b>          |
| <b>Minimum Outdoor amenity space (m2)</b> | <b>7</b>            | ✓         | <b>7.00</b>           |

### TYPE I

Block H  
86.40 sqm

- H-02
- H-03
- H-06
- H-07
- H-10
- H-11
- H-14
- H-15

| Flat - 3bed 5persion                      | LHDG Requirements   | Compliant | Former Nestlé Factory |
|---|---------------------|-----------|-----------------------|
| Combined kitchen/living/dining            | As per Appendix D   | ✓         | See Plan              |
| Double room 1 (principal)                 | 11.50 m2   w=2.75 m | ✓         | 18.05 m2   w=3.12 m   |
| Double room 2 (second)                    | 11.50 m2   w=2.55 m | ✓         | 11.50 m2   w=3.35 m   |
| Single room                               | 7.50 m2   w=2.15 m  | ✓         | 8.14 m2   w=2.21 m    |
| Bathroom                                  | As per Diagram 2.5  | ✓         | See Plan              |
| WC with shower                            | As per Diagram 2.5  | ✓         | See Plan              |
| Storage                                   | 2.5 m2              | ✓         | 2.50                  |
| <b>Minimum Area Required (m2)</b>         | <b>86</b>           | ✓         | <b>86.00</b>          |
| <b>Minimum Outdoor amenity space (m2)</b> | <b>7</b>            | ✓         | <b>7.00</b>           |



### TYPE J

Block H  
86.00 sqm

- H-17
- H-18