

F1-53
2B 3P
74.1sqm

F1-55
2B 3P (A)
74.1sqm

F1-57
1B 2P
55.0sqm

F1-59
1B 2P
55.0sqm

F1-61
2B 3P (A)
74.1sqm

F1-62
3B 5P
94.9sqm

F1-54
2B 3P
67.2sqm

F1-56
2B 3P
68.0sqm

F1-58
1B 2P
50.0sqm

F1-60
2B 3P (A)
71.9sqm

F1-63
2B 3P
67.0sqm

F1-64
2B 3P
75.2sqm

F1-65
2B 3P
61.0sqm

F1-66
1B 2P
50.1sqm

F1-68
1B 2P
50.1sqm

F1-67
2B 3P (A)
74.1sqm

F1-68
1B 2P (A)
62.4sqm

F1-70
1B 2P (A)
62.4sqm

F1-71
1B 2P (A)
62.4sqm

F1-72
1B 2P (A)
62.4sqm

F1-73
1B 2P (A)
62.4sqm

F1-74
1B 2P (A)
62.4sqm

F1-75
1B 2P (A)
62.4sqm

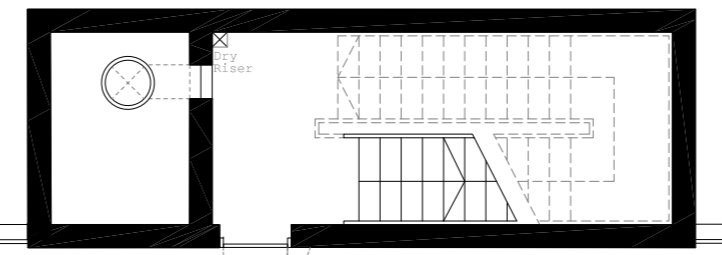
F1-76
1B 2P (A)
62.4sqm

F1-77
1B 2P (A)
62.4sqm

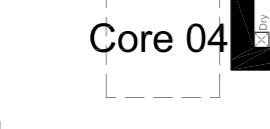
F1-78
1B 2P (A)
62.4sqm

F1-79
2B 3P (A)
80.7sqm

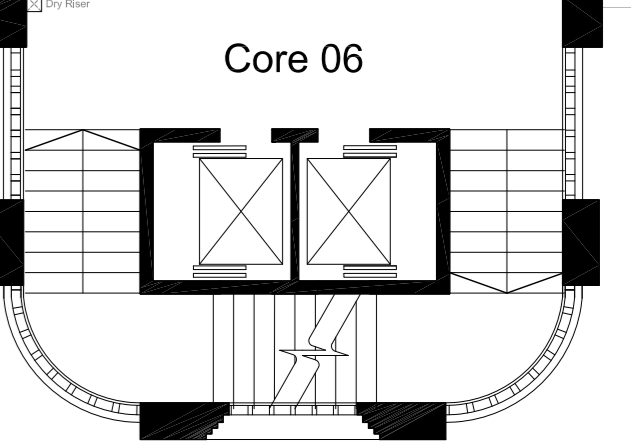
F1-80
2B 3P (A)
78.1sqm



Core 05



Core 04



Core 06



DATE	REV	DESCRIPTION	CHK
15/05/2024	01	FOR APPROVAL	DM
15/05/2024	02	FOR APPROVAL	DM

