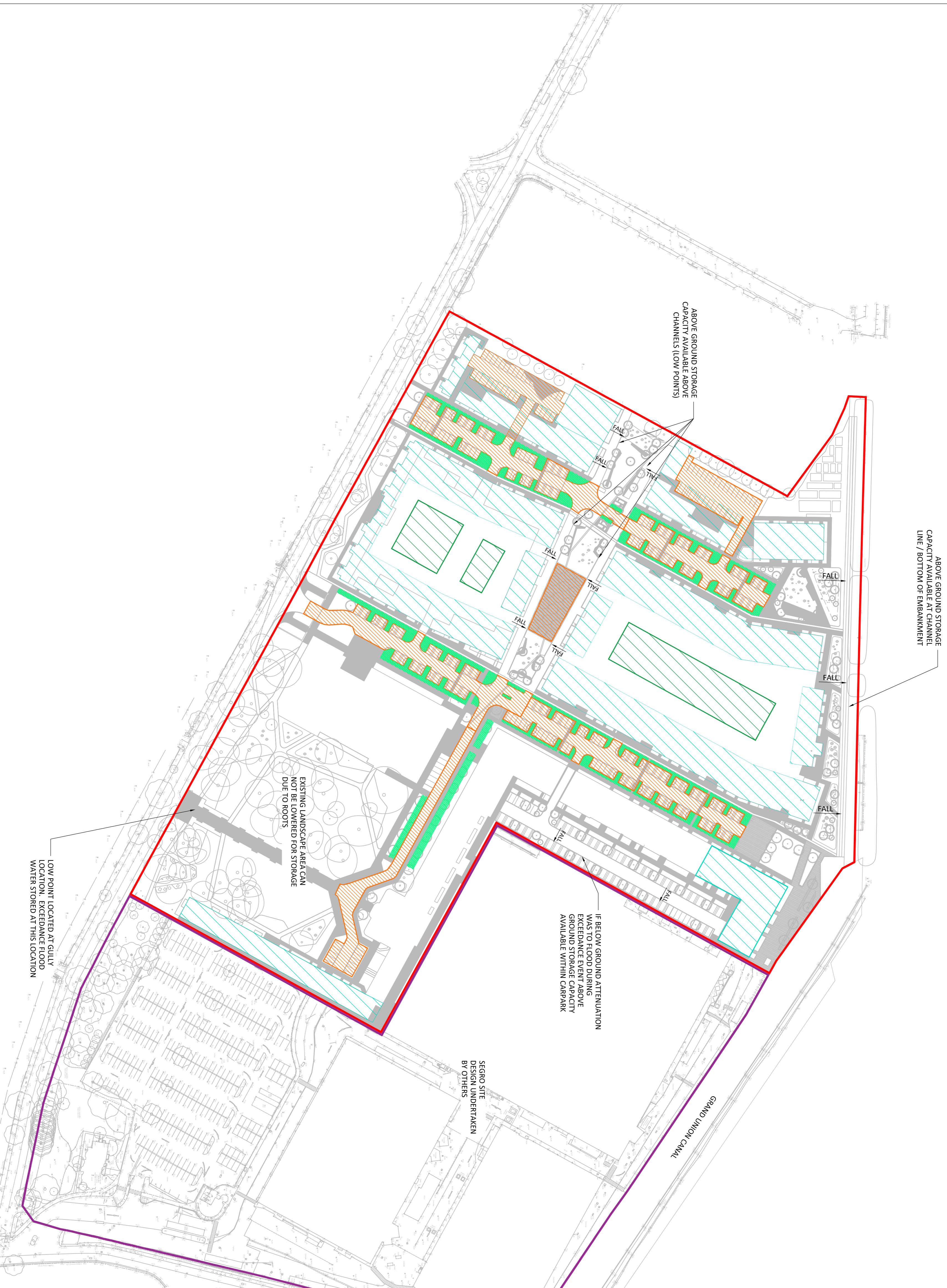






THE DRAINAGE NETWORKS HAVE BEEN DESIGNED TO NOT FLOOD DURING A 1 IN 100 +40% CLIMATE CHANGE STORM, DURING AN EXCEEDANCE EVENT ADDITIONAL STORAGE WILL BE PROVIDE AS SHOWN ON THIS PLAN.



-  PERMEABLE PAVING, 220mm DEPTH OF ADDITIONAL CAPACITY AVAILABLE ABOVE ATTENUATING SUBBASE PRIOR TO REACHING SURFACE
-  PODIUM ATTENUATION, INCREASE IN WATER LEVEL ABOVE ATTENUATION WILL CREATE GREATER HEAD DISCHARGING GREATER FLOWS TO PERMEABLE PAVING
-  BLUE ROOF WITH GREEN ROOF OVERLAP, WATER LEVEL ABLE TO RISE INTO GREEN ROOF SUBSTRATE, INCREASE IN WATER LEVEL WILL CREATE GREATER HEAD DISCHARGING GREATER FLOWS TO PERMEABLE PAVING
-  RAIN GARDEN, 150mm DEPTH OF ADDITIONAL CAPACITY IS AVAILABLE ABOVE SURFACE LEVEL.

PI	14.02.18	PRELIMINARY	JH	JH
Rev	Date	Description	By	Chd

Architect: **MAKOWER ARCHITECTS**

Client: **Hydrock**
 BARRATT — LONDON —
 FORMER NESTLÉ SITE
 HAYES

Project Title: **FORMER NESTLÉ SITE HAYES**

Drawing Title: **EXCEEDANCE FLOOD WATER STORAGE LOCATIONS**

Drawing Status: **PRELIMINARY ISSUE**

Hydrock Job No: **C151867**

Drawn	Checked	Scale @ A1	Date	Issue Date
AB	JH	1:1000	14.02.18	14.02.18

Drawing Number: **C151867/C/110**

Revision: **P1**

Hydrock Consultants Ltd
 500/504
 Central Boulevard
 7448 00121 5000000
 www.hydrock.com