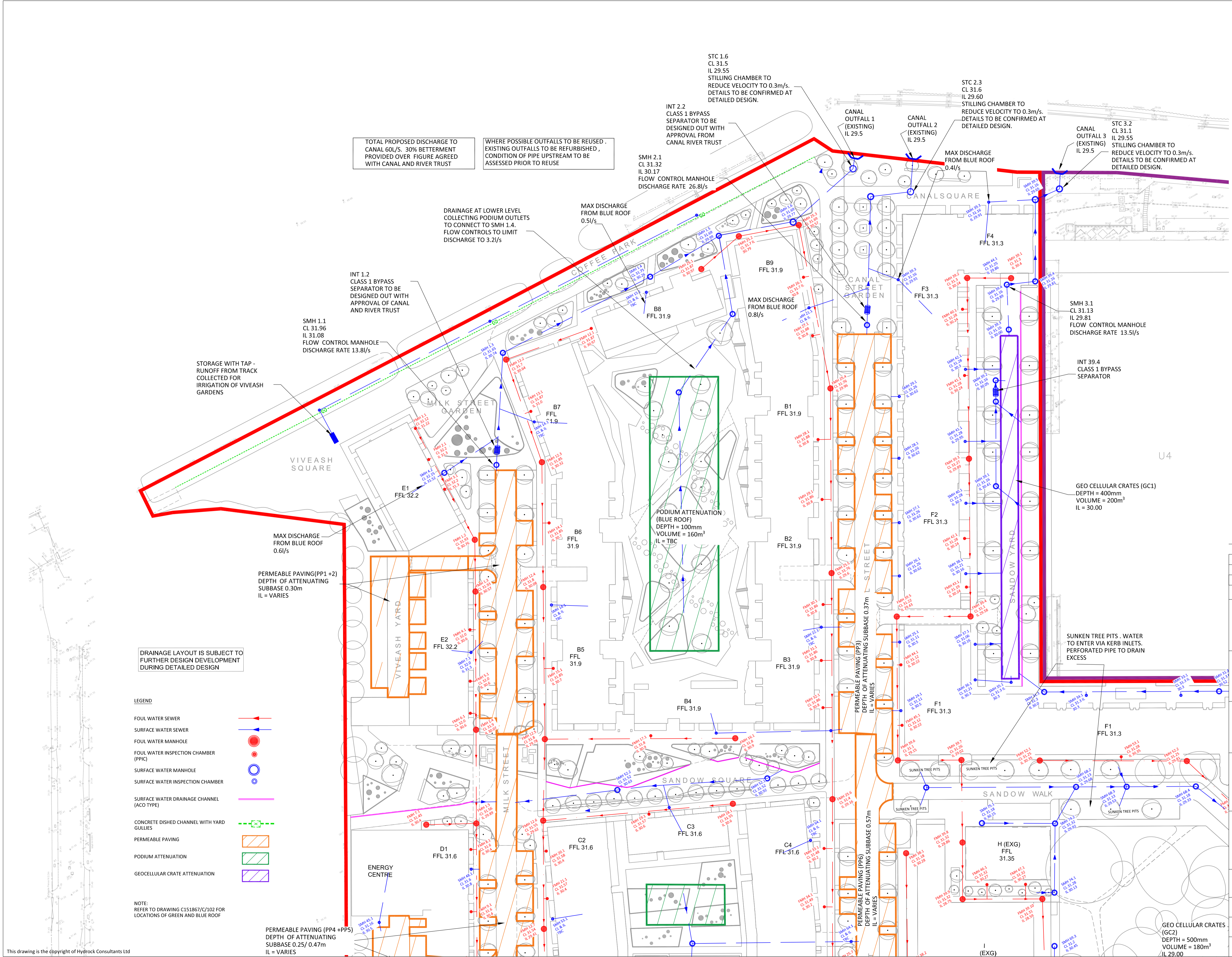


- NOTES:
- THIS DRAWING IS TO BE READ IN CONJUNCTION WITH C151867/C/002, C151867/C/101 AND C151867/C/102.
  - THE LOCATION OF EXISTING MANHOLES, PIPE SIZES, PIPE TYPE AND INVERT LEVELS TO BE CONFIRMED BY CONTRACTOR.
  - CONDITION OF EXISTING DRAINAGE CONNECTIONS FROM SITE TO BE CONFIRMED AND RETAINED IF FEASIBLE.



TOTAL PROPOSED DISCHARGE TO CANAL 60L/S. 30% BETTERMENT PROVIDED OVER FIGURE AGREED WITH CANAL AND RIVER TRUST

WHERE POSSIBLE OUTFALLS TO BE REUSED. EXISTING OUTFALLS TO BE REFURBISHED, CONDITION OF PIPE UPSTREAM TO BE ASSESSED PRIOR TO REUSE

DRAINAGE LAYOUT IS SUBJECT TO FURTHER DESIGN DEVELOPMENT DURING DETAILED DESIGN

**LEGEND**

FOUL WATER SEWER	
SURFACE WATER SEWER	
FOUL WATER MANHOLE	
FOUL WATER INSPECTION CHAMBER (PPIC)	
SURFACE WATER MANHOLE	
SURFACE WATER INSPECTION CHAMBER	
SURFACE WATER DRAINAGE CHANNEL (ACO TYPE)	
CONCRETE DISHED CHANNEL WITH YARD GULLIES	
PERMEABLE PAVING	
PODIUM ATTENUATION	
GEOCELLULAR CRATE ATTENUATION	

NOTE: REFER TO DRAWING C151867/C/102 FOR LOCATIONS OF GREEN AND BLUE ROOF

Rev	Date	Description	By	Ckd
P4	11.08.17	UPDATED IN ACCORDANCE WITH LBH COMMENTS	AB	JH
P3	21.04.17	UPDATED SITE PLAN	AB	JH
P2	27.01.17	SANDOW STREET & BUILDING H DRAINAGE	AB	JH
P1	25.01.17	PRELIMINARY ISSUE	AB	JH

Architect:

**MAKOWER ARCHITECTS**

Hydrock Consultants Ltd  
Molloy Valley Innovation Centre  
Central Boulevard  
Salford  
Greater Manchester  
M6 6PU  
T +44 (0)121 5060040  
www.hydrock.com

Client:

**BARRATT LONDON**

Project Title:  
**FORMER NESTLÉ SITE HAYES**

Drawing Title:  
**PROPOSED DRAINAGE STRATEGY SHEET 1**

Drawing Status:  
**PRELIMINARY ISSUE**

Hydrock Job No: **C151867**

Drawn	Checked	Scale @ A1	Date	Issue Date
AB	JH	1:500	27.01.17	27.01.17

Drawing Number: **C151867/C/001**      Revision: **P4**